

hilmar[®]
RETOOL + CONQUER[™]

PRODUCT CATALOG

The work takes you from superheat to freezing cold. And requires you get really comfortable in the dark, dirty and downright cramped. You gotta find a way to keep your cool even when the customer has been without hers for 27 hours. The tools in your truck are the only help you've got. And that's the kicker. Because while the work keeps getting more complex, the tools haven't evolved much at all. UNTIL NOW.



Table of Contents

VACUUM PUMPS		FLARING TOOLS	
Vacuum Pumps	2-4	Flare Family	38
Vacuum Pump Oil	5	Orbital Flare	39-40
Vacuum Gauges	6-7	Orbital Flare Kit	41
RECOVERY MACHINE		Large Basic Flare	42
Recovery Machine	8	Basic Flare	43
LEAK DETECTORS		Quick-Engage Flare and Swage Kit	44-45
Heated Diode Leak Detector	9	Large Flare/Swage	46
Infrared Leak Detector	10	Basic Flare/Swage Kit	47
REFRIGERANT SCALES		SWAGING TOOLS	
Refrigerant Scales	11-12	Swage Family	48-49
VALVE CORE REMOVAL TOOLS		Compact Swage Tool Kit	50
Valve Core Removal Tools	13	Deluxe Compact Swage Tool Kit	51
MANIFOLDS		Punch Swage Set	52
Manifold Family	14-15	Multi-Swage Punch	52
4-Valve Aluminum Manifold	16-19	TUBING CUTTERS	
2-Valve Aluminum Manifold	20-21	Tubing Cutters Family	53-54
2-Valve Basic Manifold	22	Small Diameter Tubing Cutters	55
Replacement Parts	23	Large Diameter Tubing Cutters	56
ELECTRONIC TOOLS		Plastic Tubing Cutter	57
Dual Readout Thermometer	24	Ratcheting Plastic Tubing Cutters	58
Thermocouple Clamp	25	SHEET METAL & DUCT TOOLS	
GAUGES		Sheet Metal & Duct Tools Family	59
Gauge Family	26	Aviation Snips	60
Analog Gauges	27	Offset Aviation Snips	60
HOSES		Tinner Snips	61
Hose Family	28	Aluminum Handle Snip	61
Refrigeration Hoses	29	Pipe Duct Cutter	62
Refrigeration Hoses with Ball Valve Adapters	30	V-Notcher	62
Ball Valve Extensions	31	Snap Lock Punch	63
Refrigeration Hoses with Ball Valve Ends	32	Hand Crimpers	63
Stainless Steel Evacuation Hoses	33	Hand Seamers	64
BENDING TOOLS		Folding Tools	65
Bender Family	34	Duct Stretcher	65
Compact Bender Kits	35	Hole Cutters	66
Tri-Tube Benders	36	Duct Slitting Tool	66
Spring Benders	37	Duct Knife	67
		Cable Tie Tensioning Tool	67

At hilmor, we're revolutionizing the HVAC/R world by creating tools that are a step ahead. Every tool we make is designed to give you all the features you need and none of the ones you don't. We're determined to deliver smart, innovative solutions when and where you need them most. So, you'll be fully equipped to retool and conquer.

Table of Contents

DRIVING TOOLS

Driving Tools Family	68
Fast Connect Magnetic Nut Driver Set	69
Fast Connect Screwdriver Bit Set	70
Magnetic Nutsetters	71
Magnetic Nut Drivers	72-75
Quick-Change Magnetic Nut Drivers	76
Ratcheting 9 in 1 Multi-Tool	77
9 in 1 Multi-Tool	78
6 in 1 Stubby Multi-Tool	78
Impact Fasteners Bits	79
Fast Connect Bit Extension	80
Keystone Tip Demolition Screwdrivers	81
Keystone Tip Screwdrivers	82
Cabinet Tip Screwdrivers	82
Terminal Block Screwdriver	83
Phillips Tip Screwdrivers	83
Precision Screwdriver Set	84
Screwdriver Sets	85

PLIERS, WRENCHES & WIRE STRIPPERS

Hex Key Sets	86-87
Pliers, Wrenches & Wire Strippers Family	88
Digital Adjustable Torque Wrench	89-90
Adjustable Wrenches	91
Tongue & Groove Pliers	92-93
Lineman's Pliers	94
Long Nose Pliers	94
Diagonal Cutting Pliers	95
Crimping Tool	95
Wire Strippers	96
Self-Adjusting Wire Stripper	97

UTILITY KNIVES

Utility Knives and Blades Family	98-99
Retractable Utility Knife	100
Folding Utility Knife	101

SERVICE TOOLS

Service Tools Family	102
Inspection Mirrors	103
Fin Straightening Tools	104
Deburring Tool	105
Tube Prep Brushes	106
Service Wrenches	107
Locking Pliers Pinch-Off Tool	108
Refrigerant Recovery Tool	108
Liquid Charger	109
Nitrogen Purge Tool	109

WORK LIGHTS

Work Lights Family	110
Work Light	111
Mini Work Light	111
Portable Work Light	112
Pivoting Work Light	112
Compact Work Light	113
Pocket Work Light	113

WORKSITE STORAGE

Worksite Storage Family	114
HVAC/R Tote	115
Backpack Tool Bag	116
Tool Center Bag	117
HVAC/R Refrigerant Tank & Utility Backpack	118
HVAC/R Carrying Strap	119
Zipper Pouch	120
HVAC/R General Purpose Gloves	121
HVAC/R Sheet Metal Gloves	121

KITS

HVAC/R Starter Kit	122-123
--------------------	---------

WARRANTY/PRESSURE-TEMPERATURE CHART

Warranty	124
Pressure-Temperature Chart	125

YOUR DAYS OF MESSING AROUND WITH CLUNKY, UNRELIABLE PUMPS ARE OVER.



The first thing you'll notice is how two durable hoist points allow you to transport your Vacuum Pump with ease. Simply attach the hilmer HVAC/R Carrying Strap, throw it over your shoulder and get to work. Several innovative features also help make changing oil easier. The front of the pump where the oil is stored is sloped downwards, creating a natural path for oil to drain faster. A large sight glass allows oil to be checked more easily and an oversized oil fill port makes pouring in new oil easier. These vacuum pumps have been retooled to make evacuation as easy as possible.



Hilmer
VACUUM PUMP OIL
ACEITE PARA BOMBA DE VACÍO | HUILE POUR POMPE À VIDE
HIGH PERFORMANCE
VACUUM PUMP OIL
ACEITE PARA BOMBA DE VACÍO | HUILE POUR POMPE À VIDE

Hilmer



VACUUM PUMPS

Your days of messing around with clunky, unreliable pumps are over. These two-stage rotary vane vacuum pumps have been retooled with features to make pulling vacuum down to 25 microns a breeze.



Hands-Free Carry

Two durable hoist points make transporting the vacuum pump easier. Compatible with the hilmer HVAC/R Carrying Strap.



Drains Oil Quickly

A sloped and channeled housing helps oil drain fast.



Extra Confidence

A leak-proof blank-off valve isolates the pump from the system for accurate vacuum readings and easy oil change without losing a vacuum.



Easy To Check Oil

Quickly identify oil level and detect oil contamination through a large sight glass.



Quick, Easy Access

Easy access to a large oil fill port.

Product Specifications

Item Numbers	1947970	1948121	1948122	1950532
Product Descriptions	VP3	VP5	VP9	VP12
CFM	3	5	9	12
Motor HP	1/3	1/2	1	1
Power Requirements	4.5A, 120v 60hz	7.5A, 120v 60hz	5.5A, 120v 60hz	7.6A, 120v 60hz
Motor Speed	1720 RPM	3440 RPM	1720 RPM	2500 RPM
Intake Fitting	1/4", 3/8"	1/4", 3/8", 1/2"	1/4", 3/8", 1/2"	1/4", 3/8", 1/2"
Ultimate Vacuum	25 Microns	25 Microns	25 Microns	25 Microns
Oil Capacity	11 oz.	11 oz.	15 oz.	15 oz.
Compliance	CSA	CSA	CSA	CSA
Dimensions				
Length	13.6"	13.6"	15.9"	15.6"
Width	5.5"	5.5"	5.9"	5.7"
Height	10.7"	10.7"	11.2"	10.1"
Net Weight	19.7 lbs.	19.7 lbs.	36.2 lbs.	25.5 lbs.
Warranty	2 Year Limited	2 Year Limited	2 Year Limited	2 Year Limited



Vacuum Pump
1950532

Vacuum Pump
1948122

Vacuum Pump
1948121

Vacuum Pump
1947970

VACUUM PUMP OIL

Working in basements and crawlspaces all day, you're bound to get dirty. And so is your vacuum pump oil. Oil is the lifeblood of a vacuum pump and filters moisture and contaminants from the system. Clean oil means longer life for your pump and deeper, faster vacuum pulls.

Product Specifications

Item Number	1948211	1948212
Product Descriptions	VPOQ	VPOG
Volume	Quart (Case of 12)	1 Gallon (Case of 6)

Dimensions*

Length	2-5/8"	4-1/8"
Width	4-1/8"	7"
Height	8-7/8"	12"
Weight	3 lbs.	8 lbs.

*Per Bottle



Vacuum Pump Oil
1948212, 1948211

WIRELESS VACUUM GAUGE

Easy positioning. Easier readings. Easily, the best vacuum gauge.



Easy to Read

LED backlit screen for easy to read display.



Long Battery Life

80 hour battery life for Remote Sensor and Handheld.*



Added Convenience

Programmable audible micron alarm with high and low settings.



Added Versatility

Includes foldable hook and magnet to easily attach to any unit.

*measured with LED backlight turned off

Product Specifications

Item Number	1950217
-------------	---------

Product Description	WVG
---------------------	-----

Contents

1 - Remote Sensor with 3 AAA Batteries
1 - Handheld Display with 3 AA Batteries
1 - 1/4" Female Flare Adaptor
1 - Protective Case

Dimensions

Length	8"
Width	6"
Height	3.8"

Replacement Parts

Item Number	1950219
-------------	---------

1 - Vacuum Gauge Sensor

Item Number	1950531
-------------	---------

1 - Vacuum Gauge Sensor

1 - Vacuum Gauge Transmitter



Wireless Vacuum Gauge Kit
1950217

COMPACT VACUUM GAUGE

The hilmer Compact Vacuum Gauge is an all-in-one micron gauge that is durably constructed for everyday use and abuse. An easy to read backlit display provides readings and the two button operation simplifies field use.



Easy to Read

Backlit LCD makes reading in the dark easy.



Convenient Storage

Protective case keeps the gauge safe and quick to grab.



Added Versatility

Full range readings lets you see the progress right away.



Superior Protection

Handles 800 psi momentarily if a mistake is made.



Compact Vacuum Gauge
CVG1200

Product Specifications

Item Number	CVG1200
-------------	---------

Product Description	CVG
---------------------	-----

Contents

1 - Vacuum Gauge
1 - Protective Case
3 - AAA Batteries

Dimensions

Length	4.8"
Width	2.2"
Height	1.2"

Specifications

Units

microns, mBar & mmHg

Accuracy

5% \pm 10 microns (1 to 1,000 microns) at 25°C
20% (1,000 to 5,000 microns) at 25°C

Resolution

1 micron (1 to 2,000 microns)
100 microns (2,000 to 20,000 microns)
1000 microns (20,000 to 100,000 microns)
10000 microns (100,000 to 300,000 microns)

RECOVERY MACHINE

Pulls like a powerhouse. Lifts like a feather. The recovery machine designed for you.



Quick, Easy Access

Conveniently located hose ports make connecting hoses easier and reduces strain



Accurate, Easy to Read

Digital LCD Screen provides accurate and easy to read pressure readings.



Superior Security

High- and low-pressure automatic shutoff protects machine and helps ensure safety.



Convenient Storage

Dedicated power cord wrap protects the cord and secures the plug.

Product Specifications

Item Number	1950536
-------------	---------

Product Description	RM
---------------------	----

Dimensions

Length	9.2"
Width	4.9"
Height	12-1/2"
Weight	17-1/2 lbs.

Replacement Parts

Item Number	1950537
-------------	---------

1- Intake Filter
1- O-Ring



Lightweight Brushless DC
Refrigerant Recovery Machine
1950536

HEATED DIODE REFRIGERANT LEAK DETECTOR

Tight Space? No problem. Find leaks fast with the flexible probe that allows access to all of those hard-to-reach areas.



Added Convenience

Audible and visual notification.



Easy to Read

LED screen for easy to read display.



Added Versatility

Works on all halogenated refrigerants.



Small Space Capable

Flexible probe allows access to the hard-to-reach areas.

Technical Specifications

Sensor Type	Semi-Conductive Sensor (Heated Diode)
Sensor Life	5 years (Typical)
Maximum Sensitivity (0.14 oz)	4 grams/year
Response Time	3 Seconds
Warm-Up Time	30 Seconds
Operating Environment	32°F (0°C) to 104°F (40°C) at <75% RH (non-condensing)

Product Specifications

Item Number	LDHD250
Product Description	LDHD
Contents	
1 - Leak Detector	
1 - Accessory Case	
3 - AA Batteries	
Dimensions	
Length	10-1/4"
Width	2-1/4"
Height	2-1/4"
Weight	14 oz. (397g)
Specifications	
Battery Life: 6 hours	
Warranty: 2 Year Limited	

Display Method	LED Display
Notification Mode	LED Display and Audio
Battery	(3) 1.5V AA
Battery Saver	Automatic Shutdown after 10 Minutes of inactivity
Working Time	6 Hours
Certifications	SAE J1627, SAE J2791, SAE J2913, EN14624: 2012
Refrigerants Detected	It will detect all halogenated (including Chlorine or Fluorine) refrigerants. This includes, but is not limited to: CFC: R12, R11, R500, R503 HCFC: R22, R123, R124, R502 HFC: R134A, R404A, R410A, R407C



Heated Diode Refrigerant Leak Detector
LDHD250

INFRARED REFRIGERANT LEAK DETECTOR

This detector is in it for the long haul. The 10-year sensor life will keep up with all of your daily demands.



Extra Confidence

Built to last with a 10-year sensor life.



Easy to Read

The TFT LCD screen provides a clear visual confirmation of the leak location.



Added Convenience

Audible and visual notification for leak detection.



Added Versatility

Works on all halogenated refrigerants.

Technical Specifications

Sensor Type	Infrared Spectrum Absorption
Sensor Life	10 years (Typical)
Maximum Sensitivity (0.14 oz)	4 grams/year
Response Time	3 Seconds
Warm-Up Time	30 Seconds
Operating Environment	32°F (0°C) to 104°F (40°C) at <75% RH (non-condensing)

Product Specifications

Item Number	LDIR150
Product Description	LDIR
Contents	
1 - Leak Detector	
1 - 10 pack of filters	
1 - Charger	
1 - Cable	
1 - Accessory Case	
Dimensions	
Length	7.9"
Width	3.3"
Height	1-1/2"
Weight	14.6 oz (415g)
Specifications	
Warranty: 2Year Limited	



Display Method	TFT LCD Display
Notification Mode	TFT LCD Display & Audio
Battery	Built-in Rechargeable Lithium Battery
Battery Saver	Automatic Shutdown after 10 Minutes of inactivity
Working Time	6 Hours
Charging Time	4 Hours
Certifications	SAE J1627, SAE J2791, SAE J2913, EN14624: 2012

Refrigerants Detected

It will detect all halogenated (including Chlorine or Fluorine) refrigerants. This includes, but is not limited to:
 CFC: R12, R11, R500, R503
 HCFC: R22, R123, R124, R502
 HFC: R134A, R404A, R410A, R407C
 CH: R600A

Infrared Refrigerant Leak Detector
LDIR150

WIRELESS REFRIGERANT SCALE

Rugged & durable to handle all terrains. Use inside the case for added protection from the elements. The hilmer Wireless Refrigerant Scale remote provides the user with a market leading 130 foot wireless range to help tackle those challenging locations.



Accurate Readings

Provides readings in 0.2 oz increments.



Easy to Read

Backlit LED display is easy to read.



Added Versatility

Scale can be used in or out of the protective case.



Long Range

Wireless remote keeps working up to 130 ft away.

Product Specifications

Item Number	RSWL220
-------------	---------

Product Description	WRS
---------------------	-----

Contents

- 1 - Wireless Refrigerant Scale
- 1 - Remote
- 5 - AAA Batteries
- 5 - AA Batteries
- 1 - Protective Case

Dimensions

Length	18"
Width	14-3/4"
Height	3-1/2"
Weight	10.6 lbs

Specifications

- Units: kg or lbs & oz
- Battery Life Duration: 40 hours
- Resolution: 0.2 oz. (5 g)
- Capacity: 220 lbs (100 kg)
- Wireless Range: 130 ft (40m)
- Operating Temperature: -10° to 40°C (14° to 104°F)



Wireless
Refrigerant Scale
RSWL220

REFRIGERANT SCALE

Rugged & durable to handle all terrains. Use inside the case for added protection from the elements.



Accurate Readings

Provides readings in 0.2 oz increments.



Easy to Read

Backlit LED display is easy to read.



Added Versatility

Scale can be used in or out of the protective case.



Secure

Rubberized surface provides tank stability and protects scale.

Product Specifications

Item Number	RSW220
-------------	--------

Product Description	RS
---------------------	----

Contents

1 - Refrigerant Scale
5 - AAA Batteries
1 - Protective Case

Dimensions

Length	18"
Width	14-3/4"
Height	3-1/2"
Weight	10.6 lbs

Specifications

Battery Life Duration: 40 hours
Resolution: 0.2 oz (5 g)
Capacity: 220 lbs (100 kg)



Refrigerant Scale
RSW220

VALVE CORE REMOVAL TOOL

Valve Core Removal Tools are designed to make work more efficient, but there's nothing efficient about losing tools or equipment. The hilmor Valve Core Removal Tool has a built-in rare earth magnet on the back of the plunger for convenient jobsite storage. After removing the core for evacuation or change-out, the plunger and valve core can be stored on the side of the unit. The tool comes in both 1/4" and 5/16" sizes. The hilmor Valve Core Removal Tool uses a spring gripper, as opposed to an O-ring to grab valve cores, increasing the life of the tool.



Jobsite Storage

Built-in rare-earth magnet for convenient plunger storage, minimizing lost parts on the job.



Superior Versatility

Vacuum tested to 20 microns and tested to 800 PSI working pressure.



Reliable Core Gripper

Securely and confidently remove valve cores for unrestricted flow.



Vacuum Gauge Port

1/4" side flare to easily connect a vacuum gauge.

Product Specifications

Item Number	1947967	1947968
Product Descriptions	VCRT14	VCRT516
Connection Size	1/4"	5/16"
Maximum Allowable Working Pressure	800 PSI	800 PSI
Burst Pressure	4000 PSI	4000 PSI
Operating Temperature	-20° F to +180° F	-20° F to +180° F

Dimensions

Length	2-1/2"	2-1/2"
Width	5-3/4"	5-3/4"
Height	7-7/8"	7-7/8"
Weight	8 oz.	8 oz.



Built-in rare-earth magnet for convenient jobsite storage.



Valve Core Removal Tool
1947967, 1947968

BUILT TO HANDLE ANY CLIMATE THROWN THEIR WAY.



Manifolds operate as your sidekicks on every job. They need to be durable. They need to not leak. They need to excel in even the most extreme conditions. The hilmor line of Manifolds is ready to be put to work with replaceable stainless steel valve seats and SAE-style O-rings. The list of features goes on and on, but the one that matters most is their ability to withstand all the pressures you encounter — day in and day out.



4-VALVE ALUMINUM MANIFOLD

We know that manifolds are your lifeline. So, when we decided to retool the features and design, we were meticulous down to the last detail.



Extra Confidence

Built to last with a forged aluminum body. Designed to be leak-resistant with replaceable stainless steel valve seats, SAE-style O-rings and a securely seated, large sight glass.



Quick on the Job

Get faster vacuum pulls with a true 3/8" bore throughout the valve.



Comfortable Grip

A rubberized handle makes it easier to use in wet and dirty environments.



Glows in the Dark

Light-activated paint illuminates, so you won't be left in the dark.



Built-in Pressure Reminder

A pressure reminder allows you to set the pressure ring and reference it later.



Rubberized handles are optimally sized for quick and painless turns.



Front-mounted hose positions give you easier access.



4-Valve Aluminum
Manifold with Hoses
1839130

4-VALVE ALUMINUM MANIFOLD

Product Specifications

Item Numbers/Product Descriptions					
Refrigerants	With 60" Hoses and Ball Valve Adapters	Without Hoses	Temp.	Pressure Range Low	Pressure Range High
R410A	1839109 4V410H	1839111 4V410	F/C	-30" HG/300/ 500 psi	0/800 psi
HP22-407C-410A (Heat Pump)	1839128 4V22407410H	1839129 4V22407410		0/800 psi	0/800 psi
R22-404A-410A	1839130 4V22404410H	1839132 4V22404410	F	-30" HG/300/ 500 psi	0/800 psi
Accuracy	Class 1 - 1% Accuracy (full scale)				
Gauge Connection Type	1/8" NPT Male Fitting				
Valve Type	Double O-ring Piston Style				
Valve Seat (Orifice)	Replaceable Stainless Steel (SAE-style straight thread with O-ring)				
Sight Glass	Bonded steel with SAE-style straight thread with O-ring				
Vacuum Port	3/8" full bore (quantity 1)				
Charge Ports	1/4" (quantity 3)				
Hoses Included	1839143 H60BVS4 60" Hoses with Ball Valve Adapters - Set of 4				
Dimensions					
Length	8-7/8"	8-7/8"			
Width	4"	4"			
Height	7-1/8"	7-1/8"			
Weight	without hook 7.1 lbs.	without hook 3.4 lbs.			

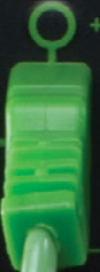


hilmer

T1
96.2
89.2
°F
T2



°C/°F



4-Valve Aluminum
Manifold with Hoses &
Dual Readout Thermometer
1839131

4-VALVE ALUMINUM MANIFOLD WITH HOSES & DUAL READOUT THERMOMETER

Product Specifications

Item Numbers/Product Descriptions					
Refrigerants	With 60" Hoses and Ball Valve Adapters		Temp.	Pressure Range Low	Pressure Range High
R410A	1839110	4V410HD	F/C	-30" HG/300/500 psi	0/800 psi
R22-404A-410A	1839131	4V22404410HD	F	-30" HG/300/500 psi	0/800 psi
Accuracy	Class 1 - 1% Accuracy (full scale)				
Gauge Connection Type	1/8" NPT Male Fitting				
Valve Type	Double O-ring Piston Style				
Valve Seat (Orifice)	Replaceable Stainless Steel (SAE-style straight thread with O-ring)				
Sight Glass	Bonded steel with SAE-style straight thread with O-ring				
Vacuum Port	3/8" full bore (quantity 1)				
Charge Ports	1/4" (quantity 3)				
Hoses Included	1839143 H60BVS4 60" Hoses with Ball Valve Adapters - Set of 4				
Thermometer Included	1839106 DROT2TCC Dual Readout Thermometer				
Two Thermocouples Included	1839108 TCC Thermocouple Clamp				
Dimensions					
Length	8-7/8"				
Width	4"				
Height	7-1/8" without hook				
Weight	7.3 lbs.				

2-VALVE ALUMINUM MANIFOLD

The rough-and-tumble durability of our 4-Valve with the simplicity of a 2-Valve design.



Extra Confidence

Built to last with a forged aluminum body. Designed to be leak-resistant with replaceable stainless steel valve seats, SAE-style O-rings and a securely seated, large sight glass.



Comfortable Grip

A rubberized handle makes it easier to use in wet and dirty environments.



Easy to Read

Improved graphics and high-contrast colors deliver precise readings at a glance.



Glows in the Dark

Light-activated paint illuminates, so you won't be left in the dark.



Built-in Pressure Reminder

A pressure reminder allows you to set the pressure ring and reference it later.



A permanent location for the temperature clamps offers quick and convenient storage.



With a forged aluminum body, it can stand up to the roughest, toughest conditions.



Rubberized handles are optimally sized for easy turns.

2-Valve Aluminum Manifold
1839134

Product Specifications

Item Numbers/Product Descriptions					
Refrigerants	Item Numbers	Product Descriptions	Temp.	Pressure Range Low	Pressure Range High
R22-134A-404A	1839126	2V22134404	F	-30" HG/120/350 psi	0/500 psi
R22-404A-410A	1839134	2V22404410	F	-30" HG/300/500 psi	0/800 psi
Accuracy		Class 1 - 1% Accuracy (full scale)			
Gauge Connection Type		1/8" NPT Male Fitting			
Valve Type		Double O-ring Piston Style			
Valve Seat (Orifice)		Replaceable Stainless Steel (SAE-style straight thread with O-ring)			
Sight Glass		Bonded Steel with SAE-style straight thread with O-ring			
Charge Ports		1/4" (quantity 3)			
Dimensions					
Length		8-7/8"			
Width		1-3/4"			
Height		7-1/8" without hook			
Weight		2.5 lbs.			

2-VALVE BASIC MANIFOLD

The hilmor 2-Valve Basic Manifold with 60" Hoses provides all the features you've come to expect from a standard manifold, and then some. It has a durable design, improved accessibility and smart functionality.

The 3-1/8" gauges have been optimized for greater readability with improved graphics, high-contrast color and glow-in-the-dark functionality. Sold with hilmor 60" hoses.



Easy to Read

Improved graphics and high-contrast colors deliver precise readings at a glance.



Glow in the Dark

Light-activated paint illuminates, so you won't be left in the dark.



Comfortable Grip

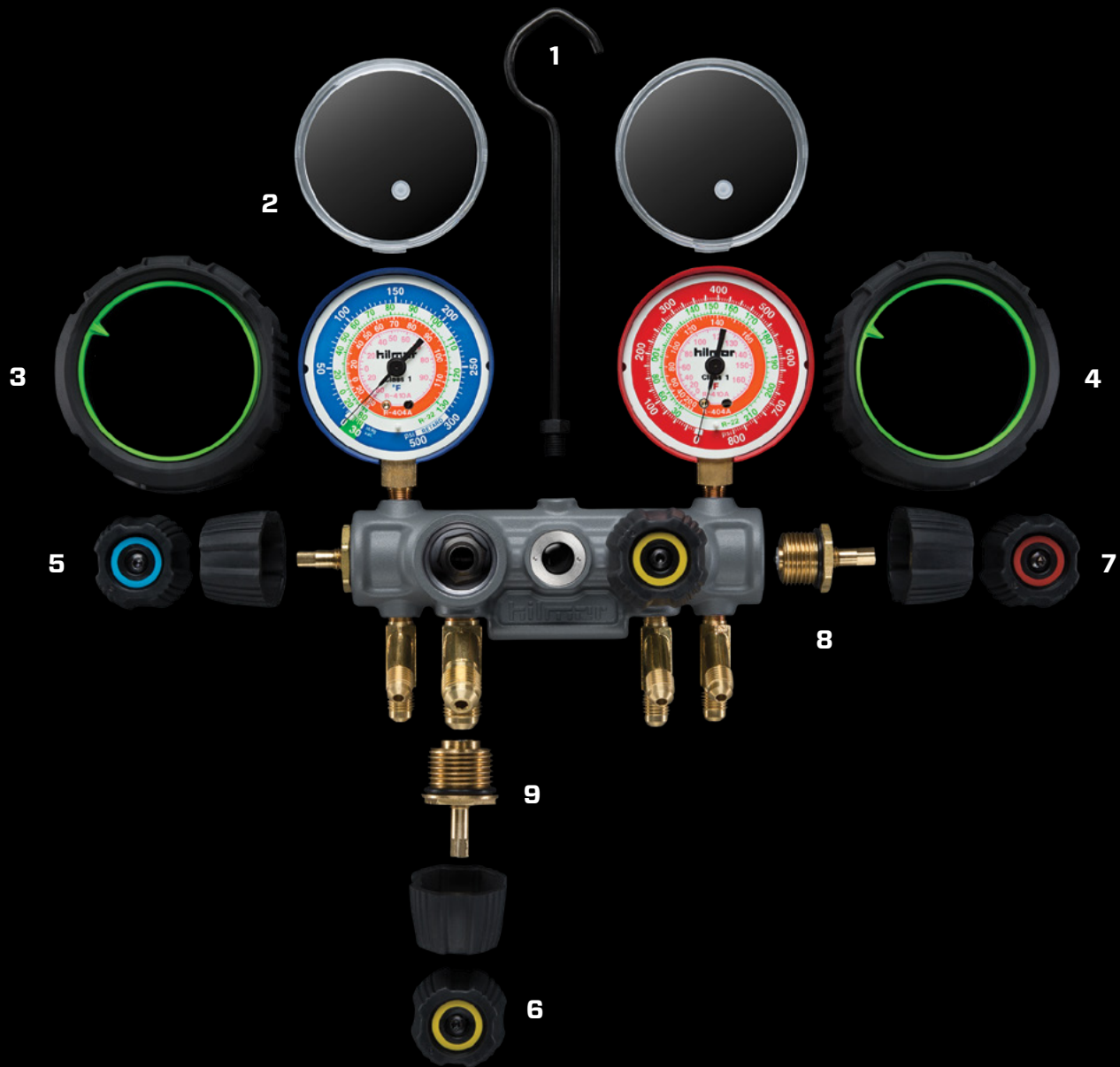
A rubberized handle makes it easier to use in wet and dirty environments.



2-Valve Basic Manifold
with Hoses
1932650

Product Specifications

Item Numbers/Product Descriptions						
Refrigerants	With 60" Hoses		Temp.	Pressure Range Low	Pressure Range High	
R410A	1839114	2VB410H	F/C	-30" HG/300/500 psi	0/800 psi	
R22-404A-410A	1932650	2VB22404410H	F	-30" HG/300/500 psi	0/800 psi	
Accuracy	Class 1 - 1% Accuracy (full scale)					
Gauge Connection Type	1/8" NPT Male Fitting					
Valve Type	Double O-ring Piston Style					
Charge Ports	1/4" (quantity 3)					
Hoses Included	1839153 H60S3 Hose 60" - Set of 3					
Dimensions						
Length	7-1/4"					
Width	3"					
Height	6"					
Weight	3.9 lbs.					



Replacement Parts

Category	Item Numbers	Product Descriptions	Location #
Manifolds	1932944	AMH Analog Manifold Hook	1
Gauges	1932986	AGL Analog Gauge Lens	2
Gauges	1932947	LAGBR Low Side Analog Gauge Boot w/Ring	3
Gauges	1932948	HAGBR High Side Analog Gauge Boot w/Ring	4
Manifolds	1932949	MVHB Manifold Valve Handle - Blue	5
Manifolds	1932951	MVHY Manifold Valve Handle - Yellow	6
Manifolds	1932950	MVHR Manifold Valve Handle - Red	7
Manifolds	1932945	VSA2 2-Valve Seat Assembly (2-1/4")	8
Manifolds	1932946	VSA4 4-Valve Seat Assembly (3-1/4", 1-3/8")	9

DUAL READOUT THERMOMETER



Makes Calculations Easier

The industry's only manifold-compatible compact thermometer with two readings to help simplify the calculation of superheat and subcool.



Superior Versatility

Use it on any gauge set, or remove it and use it independently.



Reads Temperatures Quickly

Two easy-to-use, K-style tube-clamp thermocouples get you to the temperature reading quickly.



This thermometer is the first in the industry to attach to any manifold.

Product Specifications

Item Number	1839106		
Product Description	DROT2TCC		
Two Thermocouples Included	1839108 TCC Thermocouple Clamp		
Batteries	AA x 1 (included)		
Battery Life	151 hours		
Connection Type	K		
Measurement Range	Resolution	Accuracy	
Temperature	-76°F to 999.9°F	.10° F/C	+2.0 C°/+3.6°F
Operating Temperature Range	0°C to +50°C (LCD)		

Dimensions

Length	1-3/4"
Width	1-5/8"
Height	3-7/8"
Weight	11 oz.



Dual Readout Thermometer
1839106

THERMOCOUPLE CLAMP

Get right to it on up to 1-1/8" tubing with hilmor's Thermocouple Clamp. A K-style connection offers a secure fit and is easy to use with other devices. It is a perfect pairing for the hilmor Dual Readout Thermometer. When the job is done, it is easy to stow it away. Simply wrap the thermocouple wire around the handle, and secure the plug into the clamp.



Fast, Precise Readings

Gets right to the temperature reading up to 1-1/8" tubing.



Secure Connection

K-style connection provides a tight fit and easy use with other devices.



Secure Storage

Stow it away simply by wrapping the thermocouple wire around the clamp and securing the plug.



Protect the thermocouple plug when not in use by wrapping the cord around the handle and plugging into the side socket.

Product Specifications

Item Number	1839108
Product Description	TCC
Connection Type	K
Accuracy	+/-2.0°C/+/-3.6°F
Operating Temperature (plastic)	-40°F to 250°F

Dimensions

Length	5-1/4"
Width	7/8"
Height	3-1/4"
Weight	3 oz.



Attach K-style clamp to an easily accessible spot on the hilmor manifold.



K-style clamp securely attaches to tubing up to 1-1/8" for measurements on the double.



Thermocouple Clamp
1839108

FINALLY, THE BRAINS OF YOUR OPERATION CAN TAKE A BUMP TO THE HEAD.



Analog Gauge
1839092



Analog Gauge
1839093



ANALOG GAUGES

You need accurate readings, and you need them at a glance. hilmor gauges were made for just that. Simply choose the gauge you need, and put it to work.



Easy to Read

Improved graphics and high-contrast colors deliver precise readings at a glance.



Rugged and Durable

High-impact protective boots and steel construction mean dropping it won't ruin your day.



Forget the flashlight. These gauges are equipped with glow-in-the-dark capabilities.



A pressure reminder allows you to set the pressure ring and reference it later.

Product Specifications

Item Numbers/Product Descriptions					
Refrigerants	Low-side (Blue)	Pressure Range	High-side (Red)	Temp.	Pressure Range
R410A	1839082 AG410L	-30" HG/300/500 psi	1839083 AG410H	F/C	0/800 psi
R22-134A-404A	1839088 AG22134404L	-30" HG/120/350 psi	1839089 AG22134404H	F	0/500 psi
HP22-407C-410A (Heat Pump)	1839090 AG22407410L	0/800 psi	1839091 AG22407410H	F	0/800 psi
R22-404A-410A	1839092 AG22404410L	-30" HG/300/500 psi	1839093 AG22404410H	F	0/800 psi
Accuracy	Class 1 - 1% Accuracy (full scale)				
Size	3-1/8" (80mm) Gauge				
Fitting	1/8" NPT Male connection				
Included Parts	Protective boot and dial indicator ring				
Dimensions					
Depth	1-3/4"				
Diameter	3-5/8"				
Weight	6 oz.				

THIS JOB TAKES SOME THICK SKIN.

LUCKILY, OUR HOSES HAVE IT.



If you can stand the pressure, your hoses should, too. We've rethought and retooled the hoses you use every day with smart features like an extra abrasion-resistant layer for superior protection in tough conditions. All of our Hoses are rated for 800 PSI working pressure to work with the newest high-pressure refrigerants. Simply select the Hose and Ball Valves you need. You can choose from Hoses and Ball Valve Adapters individually, or buy them as a set.

REFRIGERATION HOSES

hilmor 36" and 60" Hoses are designed with smart features including an extra abrasion-resistant layer for tough environments.



Superior Protection

An extra abrasion-resistant layer for the tough environments of HVAC/R.



Handles High Pressure

Rated for 800 PSI working pressure to work with high-pressure refrigerants.



36" Vacuum Hose
1839159



Replacement Parts

Category	Item Numbers	Product Descriptions	Location #
Hoses	1932984	HGL Hose Gaskets (3/8", Pack of 10)	1
Hoses	1932982	HGS Hose Gaskets (1/4", Pack of 12)	2
Hoses	1932985	HTD Hose Threaded Depressors, Pack of 6	3

Product Specifications

60" Hoses

Item Numbers	Product Descriptions	Diameter
1839150	H60R Hose 60" - Red	1/4"
1839151	H60B Hose 60" - Blue	1/4"
1839152	H60Y Hose 60" - Yellow	1/4"
1839153	H60S3 Hose 60" - Set of 3	1/4"
1839154	H6038 Hose 60" - VAC	3/8"

Maximum Allowable

Working Pressure 800 PSI

Burst Pressure 4000 PSI

Operating Temperature -20°F to +180°F

End Connection Straight by 45 degree

Dimensions

Length 60"
Weight 8 oz.

36" Hoses

Item Numbers	Product Descriptions	Diameter
1839156	H36B Hose 36" - Blue	1/4"
1839158	H36S3 Hose 36" - Set of 3	1/4"
1839159	H3638 Hose 36" - VAC	3/8"

Maximum Allowable

Working Pressure 800 PSI

Burst Pressure 4000 PSI

Operating Temperature -20°F to +180°F

End Connection Straight by 45 degree

Dimensions

Length 36"
Weight 6 oz.

REFRIGERATION HOSES WITH BALL VALVE EXTENSIONS

Rated for 800 PSI working pressure to work with high-pressure refrigerants. Includes an easy-turn valve for added control of refrigerant loss.



Superior Protection

An extra abrasion-resistant layer for the tough environments of HVAC/R.



Handles High Pressure

Rated for 800 PSI working pressure to work with high-pressure refrigerants.



60" Refrigeration Hoses with Ball Valve Extensions
1839143

Product Specifications

Item Numbers	Product Descriptions	Length	Diameter	Weight
1839140	H60BVR Hose Ball Valve Ext - Red	60"	1/4"	15 oz.
1839141	H60BVB Hose Ball Valve Ext - Blue	60"	1/4"	15 oz.
1839142	H60BVY Hose Ball Valve Ext - Yellow	60"	1/4"	15 oz.
1839143	H60BVS4 Hose Ball Valve Ext - Set of 4	60"	1/4" & 3/8"	3.8 lbs.
1839144	H60BV38 Hose Ball Valve Ext - VAC	60"	3/8"	1.3 lbs.
1935930	H72BVS3 Hose Ball Valve Ext - Set of 3	72"	1/4"	3.0 lbs.
1936001	H72BVBV Hose Ball Valve Ext - VAC	72"	3/8"	1.5 lbs.
1936002	H72BVS4 Hose Ball Valve Ext - Set of 4	72"	1/4" & 3/8"	4.5 lbs.

Maximum Allowable Working Pressure

800 PSI

Burst Pressure

4000 PSI

Operating Temperature

-20°F to +180°F

Hoses End Connection

Straight by Straight

Ball Valve Extension Connection

Straight by 45 degree

BALL VALVE EXTENSIONS

We all know that controlling refrigerant loss on the jobsite is a big deal. And the hilmor Ball Valve Extension is here to help. It is designed with an extra 6" of hose for additional length.



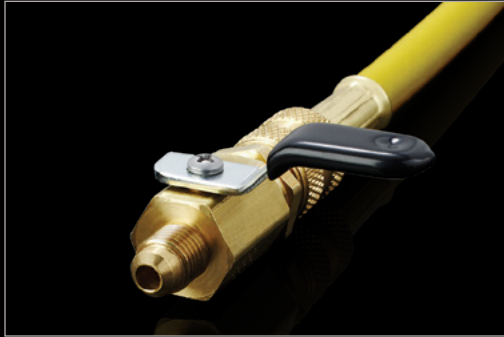
Superior Protection

An extra abrasion-resistant layer for the tough environments of HVAC/R.



Handles High Pressure

Rated for 800 PSI working pressure to work with high-pressure refrigerants.



Knob turns quickly and easily to restrict flow from hoses.

Product Specifications

Item Numbers	Product Descriptions	Diameter
1839148	BVR Ball Valve Ext - Set of 3	1/4"
1839149	BVB Ball Valve Ext - VAC	3/8"

Maximum Allowable Working Pressure 800 PSI

Burst Pressure 4000 PSI

Operating Temperature -20°F to +180°F

End Connection Straight by 45 degree

Dimensions

Length 8"
Weight 4 oz.



REFRIGERATION HOSES WITH BALL VALVE ENDS

Our retooled hoses includes an easy turn valve for added control of refrigerant loss. Features an extra abrasion-resistant layer for superior protection in tough conditions. All of our hoses are rated for 800 PSI working pressure to work with the newest high-pressure refrigerants.



Minimize Refrigerant Loss

Easy-turn valve for added control of refrigerant loss.



Handles High Pressure

Rated for 800 PSI working pressure to work with high-pressure refrigerants.



Small Space Capable

A compact design allows it to be used even in cramped spaces.

Product Specifications

Item Number	Product Descriptions	Diameter
1935917	H48BVES3 Set of 3 - 48"	1/4"
1935918	H48BVEBV Vacuum - 48"	3/8"
1935924	H60BVES3 Set of 3 - 60"	1/4"
1935925	H60BVES4 Set of 4 - 60"	1/4" & 3/8"
1935926	H60BVEBV Ball Valve - 60"	3/8"

Maximum Allowable Working Pressure 800 PSI

Burst Pressure 4000 PSI

Operating Temperature -20° F to 180° F

End Connection Straight by 45°

Dimensions

Weight 1.8 lbs. 1.0 lb.



Refrigeration Hoses with Ball Valve Ends
1935917

STAINLESS STEEL EVACUATION HOSES

When pulling a vacuum, use hilmor Stainless Steel Evacuation Hoses to help prevent permeation and outgassing for a faster evacuation.

Product Specifications

Item Numbers	Product Descriptions	Length	Diameter	Connections
1950568	14SSH36	36"	1/4"	1/4" x 1/4"
1950569	38SSH36	36"	3/8"	1/4" x 3/8"
1950570	14SSH60	60"	1/4"	1/4" x 1/4"
1950651	38SSH60	60"	3/8"	1/4" x 3/8"
Maximum Working Pressure		800PSI		
Burst Pressure		4000PSI		



Stainless Steel Evacuation Hoses
1950568, 1950569, 1980570, 1950651

IT TAKES BRAINS AND BRAWN TO BEND TUBES.



Compact Bender Kit with Reverse
Bending Attachment
1926598

COMPACT BENDER KITS

1839032 Compact Bender Kit

Body and crossbar for 1/4" to 7/8", 1/4", 5/16", 3/8", 1/2", 5/8", 3/4" and 7/8" mandrels.

1926598 Compact Bender Kit with Reverse Bending Attachment

Body and crossbar for 1/4" to 7/8", 1/4", 5/16", 3/8", 1/2", 5/8", 3/4", 7/8" mandrels and Reverse Bending Attachment.



Simple Setup

Universal crossbar and color-coded mandrels make identifying and changing sizes quick and easy.



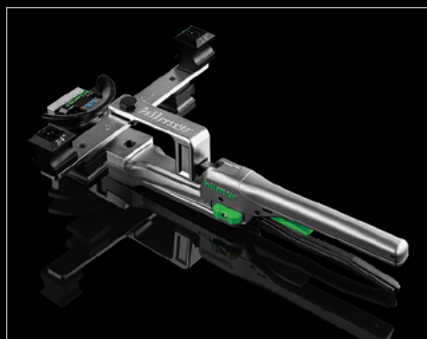
One-handed Operation

A ratcheting mechanism and innovative release lever allow for bending with one hand.



Small Space Capable

A compact design allows it to fit where others can't.



A reverse bending attachment for bends in the opposite direction.



A ratcheting lever gives you the brawn to bend tubes with one hand.



A quick-release button allows you to free the tube with ease and without damage.



A locking slider keeps the bender compact for storage and transport.

Product Specifications

Item Numbers	1839032	1926598
--------------	---------	---------

Product Descriptions	CBK	CBKRB
----------------------	-----	-------

Tube Sizes (O.D.)	1/4", 5/16"	
-------------------	-------------	--

Dimensions

Length	16-3/8"	16-3/8"
Width	12-1/4"	12-1/4"
Height	3-1/4"	3-1/4"
Weight	8.8 lbs.	10.8 lbs.

Replacement Parts

Descriptions	Item Number
CBRBM Rev Bend Att	1890999

Tube Materials	Soft Tubing Only Copper, Steel, Aluminum, Brass
----------------	--

TRI-TUBE BENDERS

From start to final bend, the hilmar Tri-Tube Benders have you covered.



Precise Angles

Calibrated markings for making accurate bends up to 180°.



Comfortable Grip

Non-slip grip.



Lighten Your Load

Constructed out of lightweight die-cast aluminum.



Indexing Handle

Compact design for tight access. (1839026 only)

Product Specifications

Item Numbers	1839026	1839027
Product Descriptions	TB31638	TB31612
Tube Sizes (O.D.)	3/16", 1/4", 5/16", 3/8"	3/16", 1/4", 3/8", 1/2"
Dimensions		
Length	2-1/2"	3-1/2"
Width	6"	7-1/2"
Height	12-1/2"	7"
Weight	1.8 lbs.	2.5 lbs.
Tube Materials	Soft Tubing Only Copper, Steel, Aluminum, Brass	



Tri-Tube Bender
1839027



Tri-Tube Bender
1839026

SPRING BENDERS

Getting an accurate bend by hand isn't always easy. But, our Spring Benders can help simplify things. Four different benders are included to fit 1/4", 3/8", 1/2" and 5/8" tubing. Simply slip the Spring Bender over soft copper or aluminum tubing, and count on the spring to keep the tube from kinking.

Product Specifications

Item Number	1839031			
Product Description	SB 4PC Set			
Tube Sizes (O.D.)	1/4"	3/8"	1/2"	5/8"
Dimensions				
Size	1/4"	3/8"	1/2"	5/8"
Length	11-1/3"	11-1/3"	11-1/3"	11-1/3"
Weight	5 oz.	5 oz.	5 oz.	5 oz.
Tube Materials	Soft Tubing Only Copper, Steel, Aluminum, Brass			

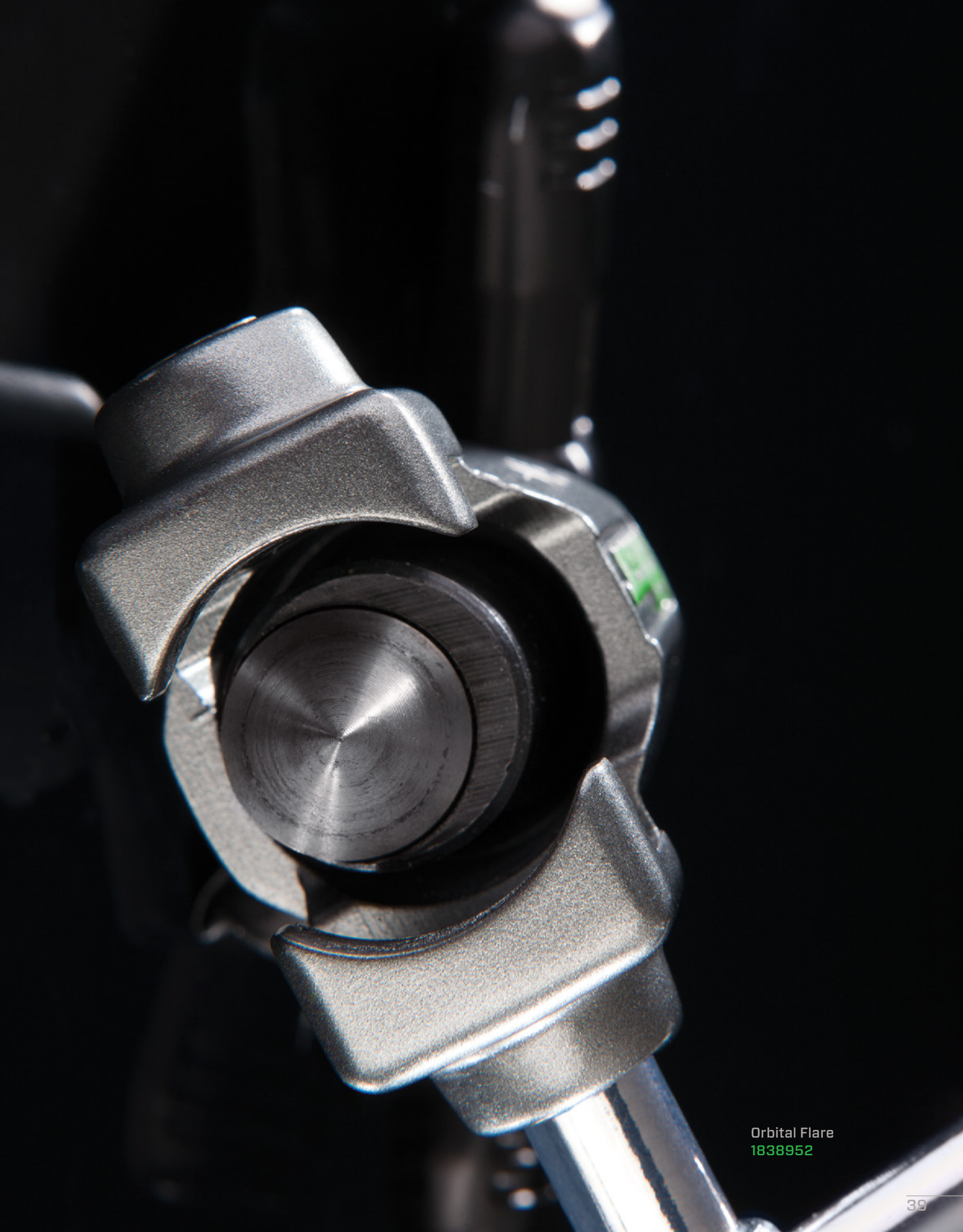


Spring Benders
1839031

GET IN. GET OUT. GET ON TO THE NEXT JOB.



Flaring and swaging is a big part of the job. That's why we made a big effort to guarantee you get a precise flare and swage every time. Convenience and comfort both come standard throughout hilmor's full line of flaring and swaging tools. Simply choose the tool that fits your needs, and get ready to conquer your next job.



Orbital Flare
1838952

ORBITAL FLARE

The Hilmor Orbital Flare was designed to produce quality flares – again and again. A tube-stop arrow allows precise positioning and placement so you can keep that nickel in your pocket. Plus, a clutch mechanism stops the flare to eliminate cracking the tube.



Precise Flares, Every Time

An off-center mounted cone spins on an axis to effectively produce quality flares.



No Cracked Tubes

A clutch mechanism stops the flaring when the job is done.



Simple Setup

A clothespin-inspired, spring-loaded block grips the tube securely.



Easy to Position

A tube-stop arrow slides to set correct height and positioning while ball detents allow for easy flaring cone alignment.

Product Specifications

Item Number 1838952

Product Description FTO

Tube Sizes (O.D.) 3/16", 1/4", 5/16", 3/8", 1/2", 5/8", 3/4"

Dimensions

Length 8-1/2"

Width 4-5/8"

Height 5-1/4"

Weight 3.8 lbs.

Tube Materials Soft Tubing Only
Copper, Steel, Aluminum, Brass

Flare Type 45 degree



A clutch mechanism stops the flare when the job is done to eliminate cracking the tube.



An off-center mounted cone helps to uniformly shape the tube.



Orbital Flare
1838952

ORBITAL FLARE KIT WITH TUBING CUTTER AND DEBURRING TOOL

The hilmer Orbital Flare Kit comes with everything you need to produce quality flares - again and again. The kit includes hilmer's Large Diameter Tubing Cutter (item # 1885384) for easy kink-free cuts, a Pocket Size Deburring Tool (item # 1891258) to smooth things over and, of course, our industry-leading Orbital Flare (item # 1838952).



Storage

Kit included for convenient storage.



Precise Flares, Every Time

An off-center mounted cone spins on an axis to effectively produce quality flares.



No Cracked Tubes

A clutch mechanism stops the flaring when the job is done.



Accurate Cutting

A unique, four-roller tracking system keeps the tube from threading.



Professional Deburring

Conveniently deburr tubes and fittings 1/4" nominal and larger.

Product Specifications

Item Number	1937685
Product Description	FTOK
Tube Sizes (O.D.)	3/16", 1/4", 5/16", 3/8", 1/2", 5/8", 3/4"
Tube Materials	Soft Tubing Only Copper, Steel, Aluminum, Brass

Dimensions

Length	9"
Width	12-1/2"
Height	2-1/2"
Weight	5.8 lbs.

Kit Contents

Orbital Flare, Large Diameter Tubing Cutter, Pocket Size Deburring Tool



Orbital Flare Kit
1937685

LARGE BASIC FLARE

The hilmor Large Basic Flare has all the advantages of hilmor flaring tools with the bulked-up size to handle 3/4" to 1-1/8" tubes. And it can fit into spaces other flaring and swaging tools can't.



Durable

The cast steel yoke and hardened flaring bar are made to be knocked around.



Control

Steel wing nuts make it easy to hold pipe secure.



Quality Flares

An extra-long handle provides more leverage and self-centers for a consistent quality flare.

Product Specifications

Item Number 1838955

Product Description FTL

Tube Sizes (O.D.) 3/4", 7/8", 1-1/8"

Dimensions

Length 7"

Width 6"

Height 5-1/4"

Weight 3.7 lbs.

Tube Materials Soft Tubing Only
Copper, Steel, Aluminum, Brass

Flare Type 45 degree



Large Basic Flare
1838955

BASIC FLARE

The hilmor flaring tools are the no-muss, no-fuss way to flare. Our Basic Flare handles 1/8" to 3/4" tubes.



Durable

The cast steel yoke and hardened flaring bar are made to be knocked around.



Control

Steel wing nuts make it easy to hold pipe secure.



Quality Flares

An extra-long handle provides more leverage and self-centers for a consistent quality flare.

Product Specifications

Item Number	1838956
Product Description	FT1834
Tube Sizes (O.D.)	1/8", 3/16", 1/4", 5/16", 3/8", 1/2", 5/8", 3/4"
Dimensions	
Length	8-3/4"
Width	5-1/4"
Height	4-1/4"
Weight	2.4 lbs.
Tube Materials	Soft Tubing Only Copper, Steel, Aluminum, Brass
Flare Type	45 degree



Basic Flare
1838956

QUICK-ENGAGE FLARE AND SWAGE KIT

Extra appendages are hard to come by these days. Instead, opt for the all-new hilmar Quick-Engage Flare and Swage. Simple setup, precise positioning and a secure hold allow you to quickly conquer and move on to the next job.



Less Work

Allows for faster flares and swages because it requires fewer rotations.



Simple Setup

A clothespin-inspired, spring-loaded block grips the tube securely.



Easy to Position

A tube-stop arrow slides to set correct height and positioning, while ball detents allow for easy flaring cone alignment.

Product Specifications

Item Number 1838947

Product Description FS

Tube Sizes (O.D.) 3/16", 1/4", 5/16", 3/8", 1/2", 5/8", 3/4"

Dimensions

Length 8-1/2"

Width 4-5/8"

Height 7-1/2"

Weight 3.5 lbs.

Tube Materials Soft Tubing Only
Copper, Steel, Aluminum, Brass

Flare Type 45 degree

Kit Contents

1 Bar, 1 Quick-Engage Yoke, 1 Flare Cone 3/16" to 3/4",
5 Swage Heads



Ball detents ensure proper and precise alignment to guarantee a perfect flare or swage every time.



Push down the yoke and with fewer rotations, you get a precise flare or swage.



An innovative spring-loaded block holds the tube firmly in place.



Quick-Engage Flare and Swage
1838947

LARGE FLARE/SWAGE

When you need a precise, quality flare or swage, the hilmor Large Flare/Swage delivers. Its compact design allows it to fit where others can't. And, with a long handle for additional leverage, it can help give you a leg up on any job.



Durable

The cast steel yoke and hardened flaring bar are made to be knocked around.



Control

Steel wing nuts make it easy to hold pipe secure.



Small Space Capable

A compact design allows it to be used even in cramped spaces.



Quality Flares

An extra-long handle provides more leverage and self-centers for a consistent quality flare.

Product Specifications

Item Number 1838948

Product Description FSL

Tube Sizes (O.D.) 3/4", 7/8", 1-1/8"

Dimensions

Length 7"
Width 6"
Height 6"
Weight 6.4 lbs.

Tube Materials Soft Tubing Only
Copper, Steel, Aluminum, Brass

Flare Type 45 degree



Easily changeable swage heads are made for 3/4", 7/8" and 1-1/8" tubing.



Large Flare/Swage
1838948

BASIC FLARE / SWAGE KIT

The hilmer Basic Flare/Swage Kit has the no-muss, no-fuss tools to flare AND swage tubes in a variety of sizes. The small Basic Flare bar handles 1/8" to 7/16" tubes, while the large Basic Flare bar helps you take on 1/2" to 3/4" tubes. Swage head attachments for sizes 1/8" to 3/4" make an entirely new tool for tube working.



Durable

The cast steel yoke and hardened flaring bars are made to be knocked around.



Control

Steel wing nuts make it easy to securely hold tube.



Small Space Capable

A compact design allows it to be used even in cramped spaces.



Quality Flares

An extra-long handle provides more leverage and self-centers for a consistent quality flare.

Product Specifications

Item Number	1937684
Product Description	FSB
Tube Sizes (O.D.)	1/8", 3/16", 1/4", 5/16", 3/8", 7/16", 1/2", 5/8", 3/4"
Tube Materials	Soft Tubing Only; Copper, Steel, Aluminum, Brass
Flare Type	45 degree

Dimensions

Length	9"
Width	12-1/2"
Height	2-1/2"
Weight	5.0 lbs.

Kit Contents

2 Bars, 1 Basic Flare/Swage Yoke, 1 Flaring Head, 5 Swage Heads

Basic Flare/Swage Kit
1937684



NO SWEAT. NO STRAIN. JUST PICTURE-PERFECT SWAGES.



At hilmar, we've built our swaging tools around the way you work. We've retooled the design to make swaging tools much more convenient and comfortable to use. And our tools deliver. Each one is made to be precise.



Compact Swage Tool
1839015 and 1964041

COMPACT SWAGE TOOL KIT

The new hilmor Compact Swage Tool is taking swaging to the next level. It has the power to swage 2-1/8" tubing and the control to swage 1/4" tubing without a crack. With its small, pistol-shape design, it can fit in the smallest of spaces. This proprietary design can reduce on-the-job fatigue with its easy setup and one-handed operation made possible by an innovative hydraulic mechanism and release button. It's even equipped for multiple sizes.



Picture-perfect Swaging

Simply select the correct head, place it on the tool and make a quality swage.



Less Effort, More Control

The power to swage 1-5/8" tubing and the control to swage 5/16" without splitting the tube.



Small Space Capable

A compact design allows it to be used even in cramped spaces.



One-handed Operation

The lever mechanism and release button allow for one-handed swaging without the fatigue.



Compact Swage Tool Kit
1839015

Product Specifications

Compact Swage Tool Kit

Item Number 1839015

Product Description CS

Kit Contents 3/8", 1/2", 5/8", 3/4", 7/8" Expander Heads, Deburrer, Compact Swage Tool

Tube Sizes (O.D.) 3/8", 1/2", 5/8", 3/4", 7/8"

Dimensions

Length 9"

Width 1-3/4"

Height 5"

Weight 8.5 lbs

Expander Heads & Replacement Parts

Item Numbers	Descriptions	Sizes
1964042	CSEH14 Expander Head	1/4"
1839016	CSEH516 Expander Head	5/16"
1839017	CSEH38 Expander Head	3/8"
1839018	CSEH12 Expander Head	1/2"
1839019	CSEH58 Expander Head	5/8"
1839020	CSEH34 Expander Head	3/4"
1839021	CSEH78 Expander Head	7/8"
1839022	CSEH118 Expander Head	1-1/8"
1839023	CSEH138 Expander Head	1-3/8"
1839024	CSEH158 Expander Head	1-5/8"
1964043	CSEH218 Expander Head	2-1/8"
1839025	CSB Compact Swage Body Kit	N/A
1891258	Pocket Size Deburring Tool	N/A

Tube Materials Soft Tubing Only, Copper, Steel, Aluminum, Brass

Recommended Replacement Hydraulic Fluid HV-15

Recommended Expander Head Lubricant NLGI1 or NLGI2

DELUXE COMPACT SWAGE TOOL KIT

Thoughtfully designed to fit into the smallest of spaces, the hilmar Compact Swage Tool can knock out the picture-perfect swage in just one shot. An innovative hydraulic mechanism and release button let you take care of any job single-handedly.



Picture-perfect Swaging

Simply select the correct head, place it on the tool and make a quality swage.



One-handed Operation

The lever mechanism and release button allow for one-handed swaging without the fatigue.

Product Specifications

Deluxe Compact Swage Tool Kit	
Item Number	1964041
Product Description	DCS
Deluxe Kit Contents	1/4", 5/16", 3/8", 1/2", 5/8", 3/4", 7/8", 1-1/8", 1-3/8", 1-5/8" Expander Heads, Pocket Size Deburring Tool, Compact Swage Tool
Tube Sizes (O.D.)	1/4", 5/16", 3/8", 1/2", 5/8", 3/4", 7/8", 1-1/8", 1-3/8", 1-5/8"

Dimensions	
Length	9"
Width	1-3/4"
Height	5"
Weight	8.5 lbs

Additional Expander Heads		
Item Numbers	Descriptions	Sizes
1964042	CSEH14 Expander Head	1/4"
1964043	CSEH218 Expander Head	2-1/8"



Deluxe Compact Swage Tool Kit
1964041

PUNCH SWAGE SET

Get the sizes you need, right when you need them, with the hilmor 5-piece Punch Swage Set. Punches are available in a set with 1/4", 5/16", 3/8", 1/2" and 5/8".



Punch Swage Set
1839008

Product Specifications

Item Number	1839008				
Product Description	S1458				
Tube Sizes (O.D.)	1/4"	5/16"	3/8"	1/2"	5/8"
Dimensions					
Size	1/4"	5/16"	3/8"	1/2"	5/8"
Diameter	1/2"	2/3"	2/3"	7/8"	7/8"
Height	3"	3"	3"	3-3/4"	3-3/4"
Weight	3 oz.	3 oz.	3 oz.	3 oz.	3 oz.
Tube Materials	Soft Tubing Only Copper, Steel, Aluminum, Brass				

MULTI-SWAGE PUNCH

One punch. Multiple tube sizes. The hilmor Multi-Swage Punch is designed to fit 1/4" to 5/8" tubes. Made of steel and chrome-coated for a durable design with less friction against the tube.



The Multi-Swage Punch tool is intelligently designed with a broader base to reduce missed hits.

Product Specifications

Item Number	1839009
Product Description	MS
Tube Sizes (O.D.)	1/4" to 5/8" (1/4", 5/16", 3/8", 1/2", 5/8")
Dimensions	
Diameter	7/8"
Height	5-1/4"
Weight	6 oz.
Tube Materials	Soft Tubing Only Copper, Steel, Aluminum, Brass



Multi-Swage Punch
1839009

CUT TIME, HARD WORK AND EXCESS TUBING.



Trim back on the unnecessary complexities of the job with hilmar's new line of tubing cutters. They're ruggedly durable and designed to slice through copper, PEX and PVC tubing like it's their job. Whether you're up on a ladder or stuck in a crawl space, hilmar tubing cutters will perform time and time again.



Ratcheting Plastic Tubing Cutter
2-3/8" MAX OD
1885395

SMALL DIAMETER TUBING CUTTERS

When you're in a tight space, this tool can definitely cut it. hilmer's ruggedly durable Small Diameter Tubing Cutters offer precision cuts with minimal burrs.



Rugged and Durable

An ergonomic, cast-zinc body and shock-resistant steel wheel reduce burrs while increasing life and durability.



Small Space Capable

Compact design allows this tool to fit where others can't.



Maximum Protection

A full-stop threading system offers maximum protection for cutting wheels.



Precision Flare Cutting

A flare-cutting groove allows for precision removal of material. Item 1885383 only.



Spare Blade Storage

A bonus blade comes with the tool and can be stored easily in the handle. Items 1885382 & 1885383 only.

Product Specifications

Item Numbers	1885381	1885382
Product Descriptions	TC1858	TC181
Diameters	1/8" - 5/8"	1/8" - 1"

Dimensions

Length	1-3/8"	1-3/4"
Width	3/4"	3/4"
Height	1-3/4"	2-3/8"
Weight	4 oz.	6 oz.

Item Number	1885383
Product Description	TC18118 TC
Diameter	1/8" - 1-1/8"

Dimensions

Length	2"
Width	1"
Height	3"
Weight	8 oz.



Small Diameter Tubing Cutters
1/8"- 5/8", 1/8"- 1", 1/8"- 1-1/8"
1885381, 1885382, 1885383

LARGE DIAMETER TUBING CUTTERS

This cutter can talk the talk without walking the walk. hilmor's Large Diameter Tubing Cutters feature a four-roller tracking system to keep the tube from threading. All the while, a shock-resistant steel wheel cuts through the tube like a knife through butter.



Rugged and Durable

An ergonomic, cast-zinc body and shock-resistant steel wheel reduce burrs while increasing life and durability.



Precision Flare Cutting

A flare-cutting groove allows for precision removal of material.



Maximum Protection

A full-stop threading system offers maximum protection for cutting wheels.



Spare Blade Storage

A bonus blade comes with the tool and can be stored easily in the handle.



Accurate Cutting

A unique, four-roller tracking system keeps the tube from threading.



Professional Deburring

Conveniently deburr tubes with a replaceable machinist's reamer.



Quick on the Job

Quick-action ratcheting helps you get the job done in a snap. Item 1885385 only.

Product Specifications

Item Numbers	1885384	1885385
Product Descriptions	TC18138	TC18134
Diameters	1/8" - 1-3/8"	1/8" - 1-3/4"

Dimensions

Length	2-3/4"	3"
Width	1-3/4"	1-3/4"
Height	6-1/4"	7-7/8"
Weight	1.4 lbs.	1.7 lbs.

Accessories

Item Number	1885386
Product Description	Small Tubing Cutter Wheels 2PK Fits hilmor Tubing Cutters: 1885381, 1885382
Item Number	1885387
Product Description	Tubing Cutter Wheels 2PK Fits hilmor Tubing Cutters: 1885383, 1885384, 1885385
Item Number	21024TCD
Product Description	Replacement Deburrer for 1885384 and 1885385



Large Diameter Tubing Cutters
1/8"-1-3/8" and 1/8"-1-3/4"
1885384, 1885385

PLASTIC TUBING CUTTER

We've cut out the unnecessary complexity so you can cut plastic. hilmor's Plastic Tubing Cutter gets the job done with ease. Simple design and intuitive features allow you to get a handle on any cut.



Rugged and Durable

An ergonomic, cast-aluminum body and stainless steel blade increase life and durability.



Comfortable Grip

A rubberized handle makes it easier to use in wet and dirty environments.



Easy to Open and Close

A conveniently positioned locking latch allows for true one-handed operation.



A stainless steel blade gives you the strength and precision for any cut.

Product Specifications

Item Number	1885388
Product Description	PTC Plastic Tube Cutter
Diameter	1-5/16" MAX OD

Dimensions

Length	11"
Width	5-1/2"
Height	1-2/5"
Weight	13 oz.

Replacement Blade

Item Number	1885390
Product Description	PTCRB Plastic TC Rep Blade



Plastic Tubing Cutter
1-5/16" MAX OD
1885388

RATCHETING PLASTIC TUBING CUTTERS



Rugged and Durable

An ergonomic, cast-aluminum body and stainless steel blade increase life and durability.



Comfortable Grip

A rubberized handle makes it easier to use in wet and dirty environments.



Easy to Open and Close

A conveniently placed release button allows for true one-handed operation, while a locking tab secures the blade in place.

Ratcheting Plastic Tubing Cutter
2-3/8" MAX OD
1885395



Rugged and Durable

An ergonomic, cast-aluminum body and high-carbon steel blade increase life and durability.



Easy to Open

Simply pull both handles apart to quickly start the next cut.

Product Specifications

Item Number	1885393
Product Description	RPTC158
Diameter	1-5/8" MAX OD

Dimensions

Length	9"
Width	1-1/8"
Height	4-1/8"
Weight	1.0 lbs.

Replacement Blade

Item Number	1885394
Product Description	RPTC158RB Rat TC Rep Blade

Ratcheting Plastic Tubing Cutter
1-5/8" MAX OD
1885393



Product Specifications

Item Number	1885395
Product Description	RPPTC238
Diameter	2-3/8" MAX OD

Dimensions

Length	13-1/8"
Width	1-1/3"
Height	6"
Weight	2.5 lbs.

Replacement Blade

Item Number	1885396
Product Description	RPTC238RB Rat TC Rep Blade

ALL THE TOOLS IT TAKES TO TACKLE DUCT WORK.



Whether you need to bend, crimp, pierce or cut sheet metal or duct work, our family of Sheet Metal and Duct Tools are up for the challenge.

AVIATION SNIPS

Cut sheet metal, duct, stainless steel. Oh, and time. hilmor Aviation Snips feature color-coded handles that make finding the right tool quick and easy. Plus, they have a comfortable grip and durable blades.



Rugged and Durable

High-carbon steel blades and a reinforced chrome silicon spring increase life and durability.



Quick Identification

Color-coded handle inserts and splines make identification simple.



Comfortable Grip

Over-molded handles reduce hand fatigue and won't slip or twist.



Left Cut Aviation Snip
1891133



Right Cut Offset Aviation Snip
1891138



Bulldog Aviation Snip
1891136

Product Specifications

Aviation Snips

Item Numbers

1891133 1891134 1891135 1891172

Product Descriptions

SNIPAL SNIPAR SNIPAS SNIPASLR

Capacity

CRS	18ga	18ga	18ga	18ga
SS	22ga	22ga	22ga	22ga

Dimensions

Length	10-3/8"	10-3/8"	10-3/8"	10-3/8"
Width	3-1/2"	3-1/2"	3-1/2"	9-1/2"
Height	7/8"	7/8"	7/8"	9-1/2"
Weight	1.1 lbs.	1.1 lbs.	1.1 lbs.	3.3 lbs.

Cutting Direction



3PC Set

Bulldog & Offset Aviation Snips

Item Numbers

1891136 1891137 1891138

Product Descriptions

SNIPAB SNIPOL SNIPOR

Capacity

CRS	16ga	18ga	18ga
SS	20ga	22ga	22ga

Dimensions

Length	9-1/2"	10-1/4"	10-1/4"
Width	3-1/2"	3-1/4"	3-1/4"
Height	7/8"	1"	1"
Weight	1.0 lbs.	1.1 lbs.	1.1 lbs.

Cutting Direction



Color-coded handle inserts for quick identification.



Lock for quick and easy storage.

TINNER SNIPS

Straight cuts. Curved cuts. Left and right. That's what a rubberized handle and hot-drop forged steel blades can do for you. The hilmor Tinner Snips get it done.



Rugged and Durable

Precision-formed, hot-drop forged steel blades increase life and durability.



Comfortable Grip

Over-molded handles reduce hand fatigue and won't slip or twist.

12" Tinner Snip
1891175



ALUMINUM HANDLE SNIP

If longer, cleaner cuts are your thing, this pair of snips is for you. It's lightweight, aluminum composition makes this tool easy to handle and comfortable in your hands.



Rugged and Durable

Lightweight aluminum construction and replaceable blades increase life and durability.



Less Work

A 3-1/2" cut length requires fewer cuts to complete the job.



Added Versatility

Use either right or left hand to easily make cuts.



Aluminum Handle Snip
1891173

Product Specifications

Item Numbers 1891175

Product Descriptions SNIP12T

Sizes 12"

Capacity

CRS 20ga

SS 22ga

Dimensions

Length 12-3/8"

Width 4-3/8"

Height 1/2"

Weight 1.5 lbs.

Cutting Direction



Product Specifications

Item Number 1891173

Product Description SNIP13AH

Capacity

CRS 24ga

SS 28ga

Dimensions

Length 13"

Width 4"

Height 1/2"

Weight 1.2 lbs.

Cutting Direction



Replacement Blade

Item Number 1891174

Description SNIP13AHRB
13" AL HAND REP BLADE

PIPE DUCT CUTTER

The hilmer Pipe Duct Cutter offers rugged steel blades and a reinforced spring to cut through up to 18-gauge sheet metal and 22-gauge stainless steel with ease.



Rugged and Durable

High-carbon steel blades and a reinforced chrome silicon spring increase life and durability.



Comfortable Grip

Over-molded handles reduce hand fatigue and won't slip or twist.



Pipe Duct Cutter

For cutting metal pipe and duct.

Product Specifications

Item Number	1891189
Product Description	SMTPDC
Capacity	
CRS	18ga
SS	22ga
Dimensions	
Length	10-1/2"
Width	3"
Height	7/8"
Weight	1.2 lbs.



Pipe Duct Cutter
1891189

V-NOTCHER

This tool puts the V-notch in HVAC/R. It's perfect for making clean 30° V-shaped cuts in sheet metal without distorting or crimping the material.



Rugged and Durable

High-carbon steel blades and a reinforced chrome silicon spring increase life and durability.



Comfortable Grip

Over-molded handles reduce hand fatigue and won't slip or twist.



V-Notcher

Cuts V-shaped notch in sheet metal.

Product Specifications

Item Number	1891180
Product Description	SMTVN1
Capacity	
CRS	18ga
SS	22ga
Dimensions	
Length	9-1/4"
Width	3"
Height	7/8"
Weight	1.2 lbs.



V-Notcher
1891180

SNAP LOCK PUNCH

You've heard the saying. A screw is temporary, but the Snap Lock Punch is forever. This tool can join sheet metal, duct or pipe in a snap for a hold that lasts a lifetime.



Rugged and Durable

Stainless steel blades and a reinforced chrome silicon spring increase life and durability.



Comfortable Grip

Over-molded handles reduce hand fatigue and won't slip or twist.



Snap Lock Punch

For joining sheet metal, duct and pipe.

HAND CRIMPERS

A crimping tool that won't cramp your style. Or your hand. hilmor Hand Crimpers come standard with contoured rubber grips that fit comfortably in your hands. Happy crimping!



Rugged and Durable

High-carbon steel blades and a reinforced chrome silicon spring increase life and durability.



Comfortable Grip

Over-molded handles reduce hand fatigue and won't slip or twist.



Hand Crimper

For crimping round metal pipe.

Product Specifications

Item Number	1891182
Product Description	SMTSLP
Capacity	
CRS	18ga
SS	22ga

Dimensions

Length	8-7/8"
Width	3"
Height	7/8"
Weight	1.1 lbs.

Snap Lock Punch
1891182



Product Specifications

Item Numbers	1891186	1891187
Product Descriptions	SMTCTTT	SMTBC5
Capacity		
CRS	18ga	18ga
SS	22ga	22ga

Dimensions

Length	9-3/4"	9-3/4"
Width	3"	3"
Height	7/8"	7/8"
Weight	1.0 lbs.	1.2 lbs.

3-Blade Crimper,
5-Blade Crimper
1891186, 1891187



HAND SEAMERS

They can bend sheet metal. Flatten it. And flat-out get the job done. 1/4" depth marks ensure an accurate bend, and a reinforced spring stands the test of time.



Rugged and Durable

Stainless steel blades and a reinforced chrome silicon spring increase life and durability.



Comfortable Grip

Over-molded handles reduce hand fatigue and won't slip or twist.



Quick Identification

1/4" depth marks on the blades allow for quick bends.

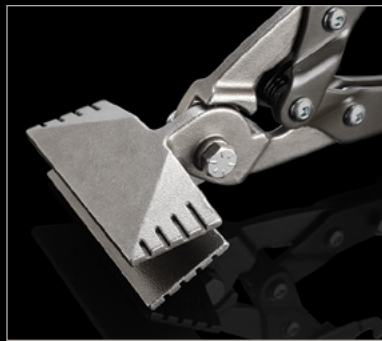


Seamer

For bending and flattening sheet metal.

Product Specifications

Item Numbers	1891185	1891183	1891184
Product Descriptions	SMTHS3	SMTHS03	SMTHS6
Sizes	3"	3" Offset	6"
Capacity			
CRS	18ga	18ga	18ga
SS	22ga	22ga	22ga
Dimensions			
Length	9-3/4"	8-1/4"	10"
Width	3-1/8"	5"	6"
Height	7/8"	3-1/4"	3-1/2"
Weight	1.5 lbs.	1.4 lbs.	2.2 lbs.



1/4" depth marks on the blades allow for quick bends.



Locking latch.

3" Offset Hand Seamer
1891183

6" Hand Seamer
1891184

3" Hand Seamer
1891185

FOLDING TOOLS

This tool can fold without folding on the job. From end caps to folds for drive cleats, hilmor Folding Tools can handle it all. Strength meets precision with sight holes for depth alignment.



Folding Tool

Built for both 3/8" (10mm) and 1" (25mm) folds.

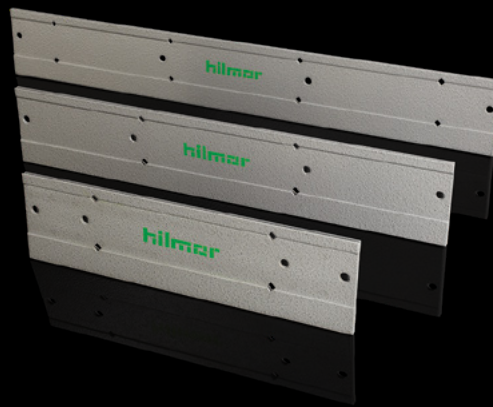


Accurate Folding

Equipped with sight holes for proper depth alignment.

Product Specifications

Item Numbers	1891146	1890985	1890986
Product Descriptions	SMTFT12	SMTDT18	SMTFT24
Capacity CRS	18ga	18ga	18ga
Dimensions			
Length	12"	18"	24"
Width	3-1/4"	3-1/4"	3-1/4"
Height	1/5"	1/5"	1/5"
Weight	1.4 lbs.	2.1 lbs.	2.8 lbs.



12", 18" & 24"
Folding Tools
1891146, 1890985,
1890986

DUCT STRETCHER

Two ducts. One hand. Bring it all together with the hilmor Duct Tool. Large gaps are no match. Its sleek aluminum body maintains a low profile to get into tight spaces.



Rugged and Durable

An all-aluminum body increases life and durability.



Small Space Capable

Features a low profile for use in tight spaces.



Added Versatility

Additional spacing holes allow wheels to be adjusted for use on large gaps.



Comfortable Grip

A cushion grip for reduced hand fatigue.

Product Specifications

Item Number	1890987
Product Description	SMTDS
Dimensions	
Length	16"
Width	1/4"
Height	1-1/2"
Weight	11 oz.

Replacement Wheels

Item Number	1890988
Product Description	SMTDSRW Rep Wheels 2PK



Duct Stretcher
1890987

HOLE CUTTERS

Power and precision. Cut holes in sheet metal like a knife through butter, and make them precise with metric and standard scales. Handles 2" to 20" holes.



Rugged and Durable

Includes a lightweight aluminum frame, with a milled bit for life and durability.



Added Versatility

Get two-in-one capabilities with both inch and metric scales.



Perfect Fit

Fits into any corded or cordless drill with a 1/4" or larger chuck.

Product Specifications

Item Numbers	1891191	1891192
Product Descriptions	SMTHC212	SMTHC220
Sizes	2" to 12"	2" TO 20"

Dimensions

Length	7"	11"
Width	3"	3"
Height	1"	1"
Weight	1.1 lbs.	1.5 lbs.

Replacement Part

Item Number	1891193
Description	SMTHCRB Rep Bit 1 Pack



2" to 12" & 2" to 20"
Hole Cutters
1891191, 1891192

DUCT SLITTING TOOL

Don't let its unassuming design fool you. The Duct Slitting Tool can pierce, slit or scribe with the best of them.



Comfortable Grip

Over-molded handle reduces hand fatigue and won't slip or twist.



Extra Versatility

Designed to scribe lines or pierce and enlarge holes in sheet metal.

Product Specifications

Item Number	1890990
Product Description	SMTDR

Dimensions

Length	9-3/8"
Width	1-1/4"
Height	1-1/4"
Weight	6 oz.



Duct Slitting Tool
1890990

DUCT KNIFE

It's time to cut ties with your old knife. The hilmor Duct Knife's hardened stainless steel blade can cut through duct board with silky, smooth precision.



Rugged and Durable

A hardened stainless steel blade increases life and durability.



Comfortable Grip

Over-molded handle reduces hand fatigue and won't slip or twist.



Added Versatility

Serrated and standard cutting edges made to cut duct board and flexible duct.



Simple Storage

A puncture-resistant nylon sheath with a belt loop allows for quick and easy storage.

Product Specifications

Item Number	1891331
Product Description	SMTDK
Dimensions	
Length	11-5/8"
Width	5/8"
Height	1-3/8"
Weight	10 oz.



Duct Knife
1891331

CABLE TIE TENSIONING TOOL

The hilmor Cable Tie Tensioning Tool can relieve the stress of the job. It seamlessly tightens heavy and lightweight cable, and cuts excess material with its easy-to-use lever.



Versatility

Works with both light and heavy-duty nylon cable ties.



Clean Cut

Easy-to-use cutting lever allows for flush cutting of excess material.

Product Specifications

Item Number	1891190
Product Description	SMTCTTT
Dimensions	
Length	7-5/8"
Width	3-7/8"
Height	5/8"
Weight	10 oz.



Cable Tie Tensioning Tool
1891190

TOOLS TO HELP YOU KICK IT OFF OR DRIVE IT HOME.



When it comes to tightening and loosening fasteners, you want tools that can get the job done fast without damaging the screw. Same for the next job and the job after that. That's why our line of Screwdrivers, Nut Drivers, Nutsetters and Hex Keys are built for the long haul.

FAST CONNECT MAGNETIC NUT DRIVER SET

The nut driver has evolved. The set features a 3" and 6" hilmor Fast Connect Magnetic Nut Driver. The name alone says it all. They're lightning fast and allow for one-handed quick release for fast and easy bit changes.



Simple Setup

A quick-change mechanism allows for easy change-out of standard bits with 1/4" hex shank.

x2

Added Versatility

Set includes both stubby and 4" handles, ensuring you have the right size tool for the job.



Secure Hold

A rare-earth magnet helps maintain a secure hold to keep fasteners firmly in place.



Reduced Stripping

Designed to drive fasteners on the side instead of on the corners, reducing breakage and stripping.



Quick Identification

A color-coded band makes size identification simple.



Convenient Storage

Soft storage pouch with additional bit storage keeps everything organized.

Product Specifications

Item Number	1937912
Product Description	SBSFC

Kit Contents

2-1/2" Fast Connect Bit Extension for 1/4"
1-7/8" Magnetic Nutsetters for 1/4", 5/16", 3/8"
#1 x 2" Phillips Impact Bit
#2 x 2" Phillips Impact Bit
#1 x 2" Square Impact Bit
#2 x 2" Square Impact Bit
4-5 x 2" Slotted Impact Bit
6-8 x 2" Slotted Impact Bit

Dimensions

Length	4"
Width	4"
Height	1-3/4"
Weight	11 oz.



Fast Connect Magnetic
Nut Driver Set
1937911

FAST CONNECT SCREWDRIVER BIT SET

Fumbling around with bits is a waste of time. The hilmar Fast Connect Screwdriver Bit Set is definitely not. The set features the Fast Connect Bit Extension that's impact driver ready. Quickly swap out bit sizes in seconds flat.



Impact Compatible

Extension and bits are specially manufactured for use with impact drivers.



1/4" Shank

The 1/4" quick-change shank is designed for use in impact drivers and rotary drills.



Secure Fit

Precision tip geometry allows for a better fit and reduced stripping.



Secure Hold

A rare-earth magnet helps maintain a secure hold to keep fasteners firmly in place.



Reduced Stripping

Designed to drive fasteners on the side instead of on the corners, reducing breakage and stripping.



Convenient Storage

Compact kit box included for quick and easy storage.

Product Specifications

Item Number	1937912
-------------	---------

Product Description	SBSFC
---------------------	-------

Kit Contents

2-1/2" Fast Connect Bit Extension for 1/4"
1-7/8" Magnetic Nutsetters for 1/4", 5/16", 3/8"
#1 x 2" Phillips Impact Bit
#2 x 2" Phillips Impact Bit
#1 x 2" Square Impact Bit
#2 x 2" Square Impact Bit
4-5 x 2" Slotted Impact Bit
6-8 x 2" Slotted Impact Bit

Dimensions

Length	4"
Width	4"
Height	1-3/4"
Weight	11 oz.

Fast Connect Screwdriver Bit Set
1937912



MAGNETIC NUTSETTERS

Choose a size. Lock in your bit. And get right to it. The hilmor Magnetic Nutsetters can do work in seconds flat. They feature magnetic tips and a lobular design to grab any bit.

Product Specifications

Item Numbers	Product Descriptions	Sizes	Length	Width	Height	Weight
1937872	MNS146	1/4"	6"	3/8"	3/8"	2 oz.
1937873	MNS5166	5/16"	6"	5/16"	5/16"	2 oz.
1937874	MNS386	3/8"	6"	1/2"	1/2"	3 oz.
1885435	MNS14178	1/4" - Set of 3	1-7/8"	3/8"	3/8"	2 oz.
1885436	MNS516178	5/16" - Set of 3	1-7/8"	5/16"	5/16"	3 oz.
1885437	MNS38178	3/8" - Set of 3	1-7/8"	1/2"	1/2"	3 oz.
1937871	MNS1783	1/4", 5/16", 3/8"	1-7/8"	NA	NA	3 oz.
1937875	MNS63PS	1/4", 5/16", 3/8"	6"	NA	NA	2 oz.



Secure Hold

A rare-earth magnet helps maintain a secure hold to keep fasteners firmly in place.



Impact Compatible

Bits are specially manufactured for use with impact drivers.



Quick ID

A color-coded band makes size identification simple.



Reduced Stopping

Designed to drive fasteners on the side instead of on the corners, reducing breakage and stripping.



1/4" Shank

The 1/4" quick-change shank is designed for use in impact drivers and rotary drills.



Rugged and Durable

Bits are built to last, manufactured from cold-forged, high-grade steel and coated with black oxide to resist corrosion.



Designed for reduced stripping.



1/4", 5/16" and 3/8" Magnetic Nutsetters
1937871, 1937875

MAGNETIC NUT DRIVERS

All sizes to conquer jobs big and small. The hilmer Magnetic Nut Drivers give you a secure hold when and where you need it.



Secure Hold

A magnetic tip keeps fasteners firmly in place.



Quick Identification

A color-coded insert makes size identification simple.



More Torque

A slip-resistant grip and wrench flats allow for maximum leverage. Wrench flat items 1839076 and 18839077 only.



Big Bolt Capable

A hollowed shaft allows for use on long bolts.



Rugged and Durable

Designed to last with a durable chrome-vanadium steel construction.

Sizes

1-1/2" Shaft Magnetic Nut Drivers: Available in 1/4" and 5/16" sizes or as a 2-piece set.

3" and 6" Shaft Magnetic Nut Drivers: Sold individually, or choose our full 7-piece set or our handy 2-piece set.

18" Shaft Magnetic Nut Drivers: Available in 1/4" and 5/16" sizes.

Product Specifications

1-1/2" Magnetic Nut Drivers

Item Numbers	1839055	1839056	1839057
Product Descriptions	SHSM14	SHSM516	SHSM2PC
Sizes	1/4"	5/16"	Set of 2 1/4" & 5/16"
Colors	Red	Yellow	Red & Yellow

Dimensions

Length	3-1/2"	3-1/2"	3-1/2"
Width	1-1/4"	1-1/4"	1-1/4"
Height	1-1/4"	1-1/4"	1-1/4"
Weight	2 oz.	2 oz.	2 oz.

18" Magnetic Nut Drivers

Item Numbers	1839076	1839077
Product Descriptions	XLHSM14	XLHSM516
Sizes	1/4"	5/16"
Colors	Red	Yellow

Dimensions

Length	22"	22"
Width	1-1/4"	1-1/4"
Weight	6 oz.	6 oz.



1-1/2" Magnetic Nut Drivers
1839057

18" Magnetic Nut Drivers
1839076, 1839077

MAGNETIC NUT DRIVERS

Product Specifications

3" Magnetic Nut Drivers					
Item Numbers	1839059	1839060	1839063	1839066	1839065
Product Descriptions	HSM14	HSM516	HSM716	HSM2PC	HSM7PC
Sizes	1/4"	5/16"	7/16"	Set of 2 1/4" & 5/16"	Set of 7
Colors	Red	Yellow	Brown	Red & Yellow	Multi
Dimensions					
Length	6-7/8"	6-7/8"	7-1/4"	6-7/8"	6-7/8" 7-1/4"
Width	1-1/4"	1-1/4"	1-3/8"	1-1/4"	1-1/4" 1-3/8"
Height	1-1/4"	1-1/4"	1-3/8"	1-1/4"	1-1/4" 1-3/8"
Weight	3 oz.	3 oz.	6 oz.	6 oz.	1.7 lbs.



A color-coded insert makes size identification quick and easy.

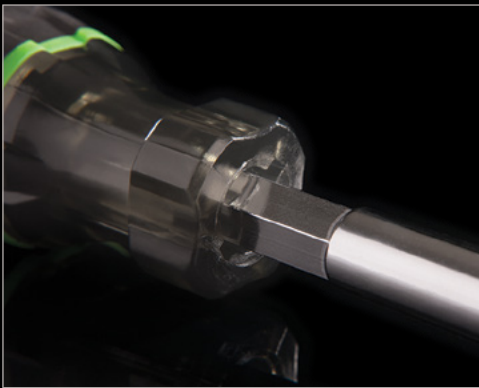


3" Magnetic Nut Driver Set
1839065

MAGNETIC NUT DRIVERS

Product Specifications

6" Magnetic Nut Drivers				
Item Numbers	1839068	1839069	1839074	1839075
Product Descriptions	LHSM14	LHSM516	LHSM2PC	LHSM7PC
Sizes	1/4"	5/16"	Set of 2 1/4" & 5/16"	Set of 7
Colors	Red	Yellow Red & Yellow	Multi	
Dimensions				
Length	9-7/8"	9-7/8"	9-7/8"	9-7/8" 10-1/4"
Width	1-1/4"	1-1/4"	1-1/4"	1-1/4" 1-3/8"
Height	1-1/4"	1-1/4"	1-1/4"	1-1/4" 1-3/8"
Weight	3 oz.	3 oz.	6 oz.	1.9 lbs.



A wrench flat lets you tighten with a wrench for ease and extra confidence.



6" Magnetic Nut Driver Set
1839075



Quick-Change Magnetic Nut Driver 1/4" & 5/16"
Shaft Length 3"
1839054

QUICK-CHANGE MAGNETIC NUT DRIVERS

It's as if 1/4" to 5/16" had an HVAC/R baby. The hilmer Quick-Change Magnetic Nut Driver is two tools in one, so you can switch from 1/4" to 5/16" with ease. A color-coded handle makes for quick identification. A magnetic tip keeps fasteners firmly in place.



Secure Hold

A magnetic tip on both ends keeps fasteners firmly in place.



Added Versatility

Quickly switch between 1/4" and 5/16", the two most common sizes.



Quick Identification

A color-coded insert on the bands and bottom makes size identification simple.



Big Bolt Capable

A hollowed shaft allows for use on long bolts.



Rugged and Durable

Designed to last with a durable chrome-vanadium steel construction.

Product Specifications

1/4" and 5/16" Quick-Change Magnetic Nut Drivers

Item Numbers	1937818	1839054	1891260
--------------	---------	---------	---------

Product Descriptions	QCNSD	QCND	QCND6
----------------------	-------	------	-------

Shaft Length	1-1/4"	3"	6"
--------------	--------	----	----

Sizes	1/4" & 5/16"	1/4" & 5/16"	1/4" & 5/16"
-------	--------------	--------------	--------------

Dimensions

Length	3-1/4"	7-1/2"	10-3/8"
--------	--------	--------	---------

Width	1-1/4"	1-1/3"	1-1/3"
-------	--------	--------	--------

Height	1-1/4"	1-1/3"	1-1/3"
--------	--------	--------	--------

Weight	3 oz.	6 oz.	6 oz.
--------	-------	-------	-------



Quick-Change Magnetic Nut Drivers 1-1/4", 3" & 6"
1937818, 1839054, 1891260

RATCHETING 9 IN 1 MULTI-TOOL

A simple twist of the hand can drive a screw, nut or bolt in no time. Nine different bits are at your disposal. A ratcheting mechanism and an ergonomic rubber grip comes standard.



Rugged and Durable

Designed with a high-torque ratcheting mechanism and thick shaft walls for long life and less stripping.



More Torque

A slip-resistant grip allows for maximum leverage.



Simple Setup

Easily change between forward, reverse and locked positions.

Product Specifications

Item Number	1891259
Product Description	MTR91
Bit Sizes	#1 & #2 Phillips, 3/16" & 1/4" Slotted, #2 Square, 1/4", 5/16", and 3/8" Nut Drivers, and Valve Core Remover.
Dimensions	
Length	8-1/2"
Width	1-1/4"
Height	1-1/4"
Weight	12 oz.



Features 9 driving bits, including a Valve Core Remover.



9 IN 1 MULTI-TOOL

When you've got a lot of jobs but not a lot of time, the 9 in 1 Multi-Tool from hilmor can save the day. It features a slip-resistant grip for more torque and a thick-walled shaft for more durability.



Rugged and Durable

Designed with thick shaft walls for long life and less stripping.



More Torque

A slip-resistant grip allows for maximum leverage.

Product Specifications

Item Numbers	1839053	1937819
Product Descriptions	9IN1SV	MT9IN16
Bit Sizes	#1 & #2 Phillips, 3/16" & 1/4" Slotted, #2 Square, 1/4", 5/16", and 3/8" Nut Drivers, and Valve Core Remover.	
Dimensions		
Length	7-1/4"	10-1/2"
Width	1-1/3"	1-1/8"
Height	1-1/3"	1-1/8"
Weight	7 oz.	10 oz.



9 In 1 Multi-Tool
1839053

6 IN 1 STUBBY MULTI-TOOL

Small spaces come standard in HVAC/R. That's why you need the hilmor 6 in 1 Stubby Multi-Tool. Its compact design fits right in, giving you the necessary torque to tighten or loosen a screw or nut.



Small Space Capable

A compact design allows for use in tight spaces.



More Torque

A slip-resistant grip allows for maximum leverage.



Simple Setup

Easily change between six different drivers - 3/16" and 1/4" Slotted, #1 and #2 Phillips, 1/4" and 5/16" Nut Drivers.

Product Specifications

Item Number	1891351
Product Description	MTS
Bit Sizes	3/16" and 1/4" Slotted, #1 and #2 Phillips, 1/4" and 5/16" Nut Drivers.
Dimensions	
Length	4-7/8"
Width	1-1/4"
Height	1-1/4"
Weight	3 oz.



6 in 1 Stubby Multi-Tool
1891351

IMPACT FASTENER BITS

Small but mighty, hilmor Impact Fastener Bits are built to stand the test of time. They fit right in with the aggressive nature of impact drivers. Heavy-duty, high-grade steel will withstand extremely high torque output.



Impact Compatible

Bits are specially manufactured for use with impact drivers.



Rugged and Durable

Bits are built to last, manufactured from high-grade steel and coated with black oxide to resist corrosion.



Secure Fit

Precision tip geometry allows for a better fit and reduced stripping.



1/4" Shank

The 1/4" quick-change shank is designed for use in impact drivers and rotary drills.

Product Specifications

Item Numbers	Product Descriptions	Bit Size
1937913	PB12	#1 Phillips
1937914	PB22	#2 Phillips
1937915	SQB12	#1 Square Bit
1937916	SQB22	#2 Square Bit
1937917	SLB452	4-5 Slotted Bit
1937918	SLB682	6-8 Slotted Bit

Dimensions

Length	7/8"
Height	1/4"
Width	1/4"
Weight	1 oz.

#1 Phillips
1937913



#2 Phillips
1937914



#1 Square Bit
1937915



#2 Square Bit
1937916



4-5 Slotted Bit
1937917



6-8 Slotted Bit
1937918



FAST CONNECT BIT EXTENSION

Built for serious impact. And impact drivers. The hilmor Fast Connect Bit Extension gives you more versatility and maximum durability. All it takes is one hand to quickly release the bit and move on to the next job.



Impact Compatible

Extension is specially manufactured for use with impact drivers.



1/4" Shank

Jaw design is compatible with all 1/4" hex shank accessories, including insert bits, while the 1/4" Fast Connect shank is designed for use in impact drivers and rotary drills.



Protection

A black oxide coating resists corrosion.

Product Specifications

Item Number	1937919
-------------	---------

Product Description	FCE25
---------------------	-------

Dimensions

Length	2-1/4"
--------	--------

Width	3/4"
-------	------

Height	3/4"
--------	------

Weight	2 oz.
--------	-------



Fast Connect Bit Extension
1937913

KEYSTONE TIP DEMOLITION SCREWDRIVERS

It's a screwdriver on steroids. Pounding, prying, chiseling - no problem. A metal strike cap and through shaft can handle just about everything you put in front of it.



Rugged and Durable

Designed to last with a heat-treated, chrome-plated through shaft and metal strike cap.



More Torque

A slip-resistant grip allows for maximum leverage.



Secure Fit

A machined tip allows for a better fit.

Product Specifications

Item Numbers	1891395	1891396
Product Descriptions	SDSLKTDEMO144	SDSLKTDEMO5167
Shaft Length	4"	7"
Tip Type/Size	1/4"	5/16"

Dimensions

Length	8"	11-1/8"
Width	1"	1-1/8"
Height	1"	1-1/8"
Weight	6 oz.	6 oz.



Metal strike cap.

5/16" Keystone Tip Demolition Screwdriver 7"
1891396



1/4" Keystone Tip Demolition Screwdriver 4"
1891395

KEYSTONE TIP & CABINET TIP SCREWDRIVERS

Driven to perform. Everything about these screwdrivers says get work done. They're designed to last with a heat-treated, chrome-plated shaft, yet they wouldn't dare strip out your screws.



More Torque

A slip-resistant grip allows for maximum leverage.



Quick Identification

Easy-to-read tip markings on the handle make identification quick and easy.



Rugged and Durable

Designed to last with a heat-treated, chrome-plated shaft.



8" Keystone Tip Screwdriver 3/8"
1891286



6" Cabinet Tip Screwdriver 1/4"
1891289

Product Specifications

KEYSTONE TIP SCREWDRIVERS

Item Numbers	1891355	1891352	1891356	1891358	1891286
Product Descriptions	SDSLKTRS14112	SDSLKTSS144	SDSLKTRS144	SDSLKTRS5166	SDSLKTRS388
Shaft Length	1-1/2"	4"	4"	6"	8"
Tip Type/Size	1/4"	1/4"	1/4"	5/16"	3/8"

Dimensions

Length	3-1/2"	8-1/8"	8"	10-1/2"	12-1/2"
Width	1-1/4"	1"	1-1/8"	1-1/4"	1-3/8"
Height	1-1/4"	1"	1-1/8"	1-1/4"	1-3/8"
Weight	2 oz.	4 oz.	4 oz.	6 oz.	8 oz.

CABINET TIP SCREWDRIVERS

Item Numbers	1891287	1891288	1891289
Product Descriptions	SDSLCTRS3163	SDSLCTRS3166	SDSLCTRS146
Shaft Length	3"	6"	6"
Tip Type/Size	3/16"	3/16"	1/4"

Dimensions

Length	6-1/2"	9-1/2"	10-1/4"
Width	1"	1"	1"
Height	1"	1"	1"
Weight	3 oz.	3 oz.	4 oz.

TERMINAL BLOCK SCREWDRIVER

A unique screw calls for a unique screwdriver. The Terminal Block Screwdriver is one-of-a-kind with a heat-treated shaft and super-comfortable grip.



More Torque

A slip-resistant grip allows for maximum leverage.



Quick Identification

Easy-to-read tip markings on the handle make identification quick and easy.



Rugged and Durable

Designed to last with a heat-treated, chrome-plated shaft.



Secure Fit

A machined tip allows for a better fit.

Product Specifications

Item Number	1891397
Product Description	SDTB4
Shaft Length	4"
Tip Type/Size	Terminal Block

Dimensions

Length	7-1/8"
Width	7/8"
Height	1"
Weight	2 oz.



Terminal Block Screwdriver 4"
1891397

PHILLIPS TIP SCREWDRIVERS

Forget screws that won't strip. You need a screwdriver that won't strip them. Introducing the hilmar Phillips Tip Screwdriver featuring machined tips for a precise fit. A rugged shaft and comfortable handle round out this tool nicely.



More Torque

A slip-resistant grip allows for maximum leverage.



Quick Identification

Easy-to-read tip markings on the handle make identification quick and easy.



Rugged and Durable

Designed to last with a heat-treated, chrome-plated shaft.



Secure Fit

A machined tip allows for a better fit.

Product Specifications

Item Numbers				
1891290	1891391	1891392	1891393	1891394

Product Descriptions

SDPHRS13	SDPHRS2	SDPHRS24	SDPHRS27	SDPHRS36
----------	---------	----------	----------	----------

Tip Type/Size

#1PH	#2PH	#2PH	#2PH	#3PH
Shaft Length				
3"	1-1/2"	4"	7"	6"

Dimensions

Length				
6-1/2"	3-1/2"	8"	11"	10-1/2"
Width				
1"	1-1/4"	1"	1"	1-1/4"
Height				
1"	1-1/4"	1"	1"	1-1/4"
Weight				
3 oz.	2 oz.	4 oz.	5 oz.	6 oz.



#1 Phillips Tip Screwdriver 3"
1891290

PRECISION SCREWDRIVER SET

When the job calls for precision, reach for hilmor. The Precision Screwdriver Set features machined tips and rotating heads. Plus, a convenient storage pouch keeps you organized.



Comfortable Grip

Over-molded handles reduce hand fatigue and won't slip or twist.



Maximum Precision

A rotating head allows for precise adjustments while giving you greater control.



Quick Identification

Easy-to-read tip markings on the handle make identification quick and easy.



Storage

Pouch included for quick and easy storage.

Product Specifications

Item Number 1891089

Product Description SDPS

Includes

1/16" x 2" Slotted
#0 x 3" Phillips
3/32" x 3" Slotted
1/8" x 4" Slotted
1/8" x 6" Slotted

Dimensions

Length 10-1/4"
Width 5"
Height 1/8"
Weight 10 oz.



Includes storage pouch.



Tip markings for quick identification.



Precision Screwdriver Set
1891089

SCREWDRIVER SETS

Tip markings on the handle for quick ID. Heat-treated shafts for extra durability. There are thousands of screwdrivers to choose from, but only one set says hilmor. Available in 5-piece or 7-piece sets.



More Torque

A slip-resistant grip allows for maximum leverage.



Quick Identification

Easy-to-read tip markings on the handle make identification quick and easy.



Rugged and Durable

Designed to last with a heat-treated, chrome-plated shaft.



Secure Fit

A machined tip allows for a better fit.

Product Specifications

Item Numbers	1891087	1891088
Product Descriptions	SD5PC	SD7PC
Includes		
5-piece Set	#2 Phillips Tip Round Shank 4" 3/16" Cabinet Tip Round Shank 6" 1/4" Cabinet Tip Round Shank 6" 1/4" Keystone Tip Square Shank 4" 5/16" Keystone Tip Round Shank 6"	
7-piece Set	#1 Phillips Tip Round Shank 3" #2 Phillips Tip Round Shank 4" 3/16" Cabinet Tip Round Shank 3" 3/16" Cabinet Tip Round Shank 6" 1/4" Cabinet Tip Round Shank 6" 1/4" Keystone Tip Square Shank 4" 5/16" Keystone Tip Round Shank 6"	

Dimensions

Length	10-1/4"	10-1/2"
Width	1-1/4"	1-1/4"
Height	1-1/4"	1-1/4"
Weight	1.4 lbs.	1.7 lbs.

5-piece Screwdriver Set
1891087

7-piece Screwdriver Set
1891088



HEX KEY SETS

Hex head screws have nowhere to hide. hilmor Hex Key Sets have standard and metric sizes covered. They're slip-resistant so you never lose your grip and always keep your cool.

Ball End Hex
Key Set Metric
1937816

Ball End Hex
Key Set Inch
1839049



You don't fold on the job. Luckily, this set does for easy, convenient storage. Available in inch and metric.



Folding Hex Key Set
Metric
1891472

Folding Hex Key Set
Inch
1839048

Product Specifications

Item Numbers	1839049	1937816
Product Descriptions	HKSS Ball End Hex Key Set Inch	HKSBEM Ball End Hex Key Set Metric
Sizes	.05", 1/16", 5/64", 3/32", 7/64", 1/8", 9/64", 5/32", 3/16", 7/32", 1/4", 5/16", 3/8"	1.5mm, 2mm, 2.5 mm, 3mm, 4mm, 5 mm, 6 mm, 8 mm, 10 mm

Dimensions

Length	7-1/4"	7"
Width	2-3/4"	2-1/2"
Height	3/4"	3/4"
Weight	13 oz.	12 oz.

Product Specifications

Item Numbers	1839048	1891472
Product Descriptions	HKFS Folding Hex Key Set Inch	HKFSM Folding Hex Key Set Metric
Sizes	5/64", 3/32", 7/64", 1/8", 9/64", 5/32", 3/16", 7/32", 1/4"	1.5mm, 2mm, 2.5mm, 3mm, 4mm, 5mm, 6mm, 8mm

Dimensions

Length	4-1/4"	4-1/4"
Width	7/8"	7/8"
Height	1-5/8"	1-5/8"
Weight	5 oz.	5 oz.

T-HANDLE HEX KEY SET

T for toughness. The hilmor T-Handle Hex Key Set features hardened, nickel chrome-plated shafts, yet ergonomic handles make sure this tool isn't too tough on your hands.



Rugged and Durable

Hardened, nickel chrome-plated shafts increase life and durability.



Comfortable Grip

Ergonomic molded handles reduce hand fatigue and won't slip or twist.



Quick Identification

Easy-to-read size markings make identification simple.



Added Versatility

A 6" shaft works well in tight spaces, while the 1/2" shaft gives you more leverage.

Product Specifications

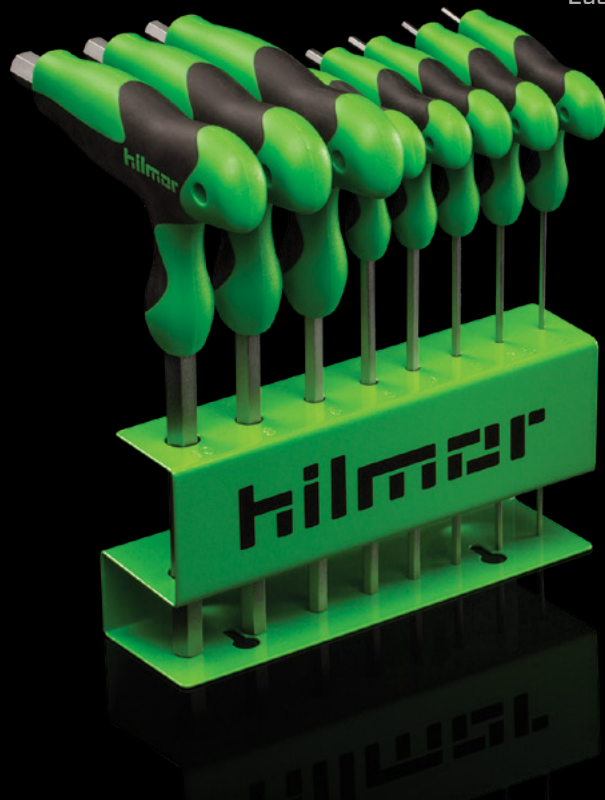
Item Numbers	1891471	1937817
Product Descriptions	HKTH T-Handle Hex Key Set Inch	HKTH T-Handle Hex Key Set Metric
Sizes	3/32", 5/32", 7/64", 3/16", 1/8", 7/32", 9/64", 1/4", 5/16", 3/8"	2 mm, 2.5 mm, 3 mm, 4 mm, 5 mm, 6 mm, 8 mm, 10 mm

Dimensions

Length	8-3/4"	8"
Width	7-3/4"	6-3/4"
Height	5-3/8"	5-1/4"
Weight	2.8 lbs.	2.2 lbs



Easy-to-read size markings.



T-Handle Hex Key Set Metric
1937817



T-Handle Hex Key Set Inch
1891471

TOOLS THAT ARE AS DURABLE AS YOU.



Cutting, gripping, stripping and crimping. Our family of Pliers, Wrenches and Wire Strippers let you do all that and more, while each tool's comfortable grip is a treat for your hands.



Digital Adjustable Torque Wrench
1963826

DIGITAL ADJUSTABLE TORQUE WRENCH

Tightening to true torque when working on mini-splits is serious business. Under tightening could result in refrigerant leaks, while overtightening could mean burst tubing. That's why the hilmor Digital Adjustable Torque Wrench is critical to perfecting torque time and time again. The 9 factory memory settings make it quick to set common torque values, while the digital display shows the amount of force applied to the flare nut. And if that didn't make the job easy enough, lights and buzzers illuminate and sound when the desired torque is achieved.



Lighten Your Load

Adjustable jaw eliminates the need to carry around extra heads.



Easy To Use

Nine programmable memory settings allow for quick access to the most common torque levels.



Precise Readings

Digital adjustments help ensure torque measurement accuracy.



Extra Confidence

LED lights and buzzer indicate that desired torque has been reached.

Product Specifications

Item Number	1963826
Product Description	DAJTW
Jaw Capacity	1/4" (5mm) to 1-1/16" (27mm) to accommodate up to 5/8" flare nuts
Accuracy	+ / 3%
Batteries	AA (x2)

Dimensions

Length	17"
Width	2-3/8"
Weight	2 lbs

Specifications

Warranty: 2 Year Limited

Technical Specifications

Torque Range (N-m)	6.8 - 135
Torque Range (Ft-lbs)	5 - 99.5
Torque Range (In-lbs)	60 - 1,195
Torque Range (kg-cm)	69 - 1,378
Battery Saver	Automatic Shutdown after 4 Minutes of Inactivity
Measurement Increments	0.1 (N-m, Ft-lb)
Operation Modes	Track, Peak
Memory Presets	9
Operating Temperature	14°F to 140°F
Dimensions	17" x 2-3/8"



Digital Adjustable Torque Wrench
1963826

ADJUSTABLE WRENCHES

Take your pick of imperial or metric scales. They come standard on all of our Adjustable Wrenches. They're made to fit in your hand with ergonomic grips and made to last by hilmer.



Comfortable Grip

Over-molded handles reduce hand fatigue and won't slip or twist.

x2

Added Versatility

Get two-in-one capabilities with both inch and metric scales.

Product Specifications

Item Number	1885369	1885370	1885421	1885422
Product Descriptions	AW6	AW8	AW10	AW12
Sizes	6"	8"	10"	12"
Jaw Capacity Up To	1"	1-1/8"	1-1/4"	1-1/2"
Dimensions				
Length	6-3/8"	8-1/4"	10"	12-1/8"
Width	1-3/4"	1"	2-5/8"	2-7/8"
Height	1/2"	5/8"	3/4"	3/4"
Weight	6 oz.	12 oz.	1.1 lbs.	1.7 lbs.



6", 8", 10" and 12" Adjustable Wrenches
 1885369, 1887370, 1885421, 1885422

QUICK-ADJUSTING TONGUE & GROOVE PLIERS

We've made an adjustment to standard pliers. Our Quick-Adjusting Tongue and Groove Pliers feature a simple push button to give you a quick precision grip on pipes, fasteners and more.



Simple Sizing

A push button allows for quick adjustments while multiple grooves guarantee precise positioning.



Comfortable Grip

Over-molded handle reduces hand fatigue and won't slip or twist.



Strong Hold

Machined jaws increase grip on the material every time.

Product Specifications

Item Numbers	1890996	1890997	1890998
Product Descriptions	PBTGP8	PBTGP10	PBTGP12
Length	8"	10"	12"
Jaw Capacity	1-1/2"	1-3/4"	2-3/16"
Dimensions			
Length	8-1/4"	10-1/8"	12-1/4"
Width	5/8"	3/4"	3/4"
Height	1-3/4"	2-1/4"	2-1/2"
Weight	9 oz.	13 oz.	1.4 lbs.



8", 10" and 12" Quick-Adjusting Tongue & Groove Pliers
1890996, 1890997, 1890998

TONGUE & GROOVE PLIERS

Like a snapping turtle, these pliers grab hold and won't let go. Machined jaws guarantee a lock-tight grip, and over-molded handles won't slip or twist. 12" model adjusts to a 2-1/16" jaw capacity.



Comfortable Grip

Over-molded handles reduce hand fatigue and won't slip or twist.



Strong Hold

Machined jaws increase grip on the material every time.

Product Specifications

Item Numbers	1885366	1885367	1885368
Product Descriptions	GJP8	GJP10	GJP12
Sizes	8"	10"	12"
Jaw Capacity	1"	1-11/16"	2-1/16"
Dimensions			
Length	8"	10-1/4"	12"
Width	2-1/2"	3-1/4"	3-1/4"
Height	3/4"	3/4"	7/8"
Weight	10 oz.	1.1 lbs.	1.5 lbs.



8", 10" and 12" Tongue & Groove Pliers
 1885366, 1885367, 1885368

LINEMAN'S PLIERS

Grab. Twist. Cut. Repeat. Over and over again. A laser-hardened cutting edge stays sharp longer, and cross-cut knurled jaws guarantee a strong grip time after time. hilmor Lineman's Pliers will last.



Stays Sharp

A laser-hardened cutting edge will stay sharper for longer.



Strong Hold

Cross-cut knurled jaws increase grip on the material every time.



Comfortable Grip

Over-molded handles reduce hand fatigue and won't slip or twist.

Product Specifications

Item Numbers	1885399	1885411
Product Descriptions	LP85	LP95
Sizes	8-1/2"	9-1/2"

Dimensions

Length	8-3/4"	9-1/2"
Width	2"	2-1/4"
Height	7/8"	7/8"
Weight	13 oz.	1.0 lbs.



8-1/2" and 9-1/2"
Lineman's Pliers
1885399, 1885411

LONG NOSE PLIERS

It's tough to beat a good pair of pliers. A laser-hardened cutting edge, cross-cut knurled jaws and over-molded handles make hilmor Long Nose Pliers pretty darn tough to beat.



Stays Sharp

A laser-hardened cutting edge will stay sharper for longer.



Strong Hold

Cross-cut knurled jaws increase grip on the material every time.



Comfortable Grip

Over-molded handles reduce hand fatigue and won't slip or twist.

Product Specifications

Item Numbers	1885397	1885398
Product Descriptions	LNP6	LNP8
Sizes	6"	8"

Dimensions

Length	6-7/8"	8-5/8"
Width	2-1/8"	2-1/8"
Height	5/8"	3/4"
Weight	4 oz.	8 oz.



6" and 8" Long Nose Pliers
1885397, 1885398

DIAGONAL CUTTING PLIERS

What's our angle? To make a great pair of pliers. The Diagonal Cutting Pliers stay sharp as a samurai sword with a laser-hardened cutting edge.



Stays Sharp

A laser-hardened cutting edge will stay sharper for longer.



Comfortable Grip

Over-molded handles reduce hand fatigue and won't slip or twist.

Product Specifications

Item Numbers	1885412	1885362	1885363
Product Descriptions	DCP6	DCP7	DCP8
Sizes	6"	7"	8"
Dimensions			
Length	6-3/4"	7-1/4"	8"
Width	2-1/8"	2-1/8"	2-1/8"
Height	3/4"	3/4"	3/4"
Weight	4 oz.	8 oz.	12 oz.



6", 7" and 8" Diagonal Cutting Pliers
1885412, 1885362, 1885363

CRIMPING TOOL

Crimp. Cut. We've got you covered. The hilmer Crimping Tool handles both insulated and non-insulated terminals. Over-molded handles and a hardened cutting edge come standard, too.



Stays Sharp

A hardened cutting edge will stay sharper for longer.



Comfortable Grip

Over-molded handles reduce hand fatigue and won't slip or twist.

Product Specifications

Item Number	1885429
Product Description	FC10
Size	10"
Capacity	
Wire	10-22AWG
Insulated Terminals	10-22AWG
Non-Insulated Terminals	10-22AWG
Dimensions	
Length	9-7/8"
Width	2-1/4"
Height	3/4"
Weight	1.1 lbs.

10" Crimping Tool
1885429



WIRE STRIPPERS

The hilmer Wire Strippers feature easy-to-read size markings, which means you can strip wires with ease and without damage. Electrical work is no laughing matter, and these Wire Strippers are no joke.



Comfortable Grip

Over-molded handles reduce hand fatigue and won't slip or twist.



Quick ID

Easy-to-read size markings on the jaws make identification simple.



Bolt Cutting

Cuts 4-40, 5-40, 6-32, 8-32, 10-24, 10-32 bolts and screws to desired size. *1885424 Only.

Product Specifications

Item Numbers	1885427	1885426	1885424
Product Descriptions	WS6	WS7	WS8
Sizes	6"	7"	8"
Capacity	10-20AWG	10-20AWG	10-22AWG
Dimensions			
Length	6-1/2"	7-1/4"	8"
Width	2-1/4"	2-1/8"	2-5/8"
Height	5/8"	5/8"	5/8"
Weight	5 oz.	6 oz.	8 oz.

8" Wire Stripper
1885424



7" Wire Stripper
1885426



6" Wire Stripper
1885427



SELF-ADJUSTING WIRE STRIPPER

All wire strippers are not created equal. These come with the ability to crimp insulated and non-insulated terminals 10-22AWG. Plus, clearly marked indicators mean you can strip without damage.

x2

Added Versatility

Crimp insulated and non-insulated terminals 10-22 AWG.



Comfortable Grip

Over-molded handles reduce hand fatigue and won't slip or twist.



Maximum Control

An adjustable stop controls the length of wire being stripped.



Precise Stripping

A micro-adjusting knob allows for stripping down to 30 AWG and up to 8 AWG.



Self-Adjusting

Automatically adjusts to strip and cut wire 10-24 AWG.

Product Specifications

Item Number	1885423
Product Description	WSSA
Sizes	Self-adjusting
Capacity	
Wire	10-24AWG
Insulated Terminals	10-22AWG
Non-Insulated Terminals	10-22AWG
Dimensions	
Length	8-3/8"
Width	3-1/2"
Height	5/8"
Weight	13 oz.



Adjustable stop and micro-adjusting knob.

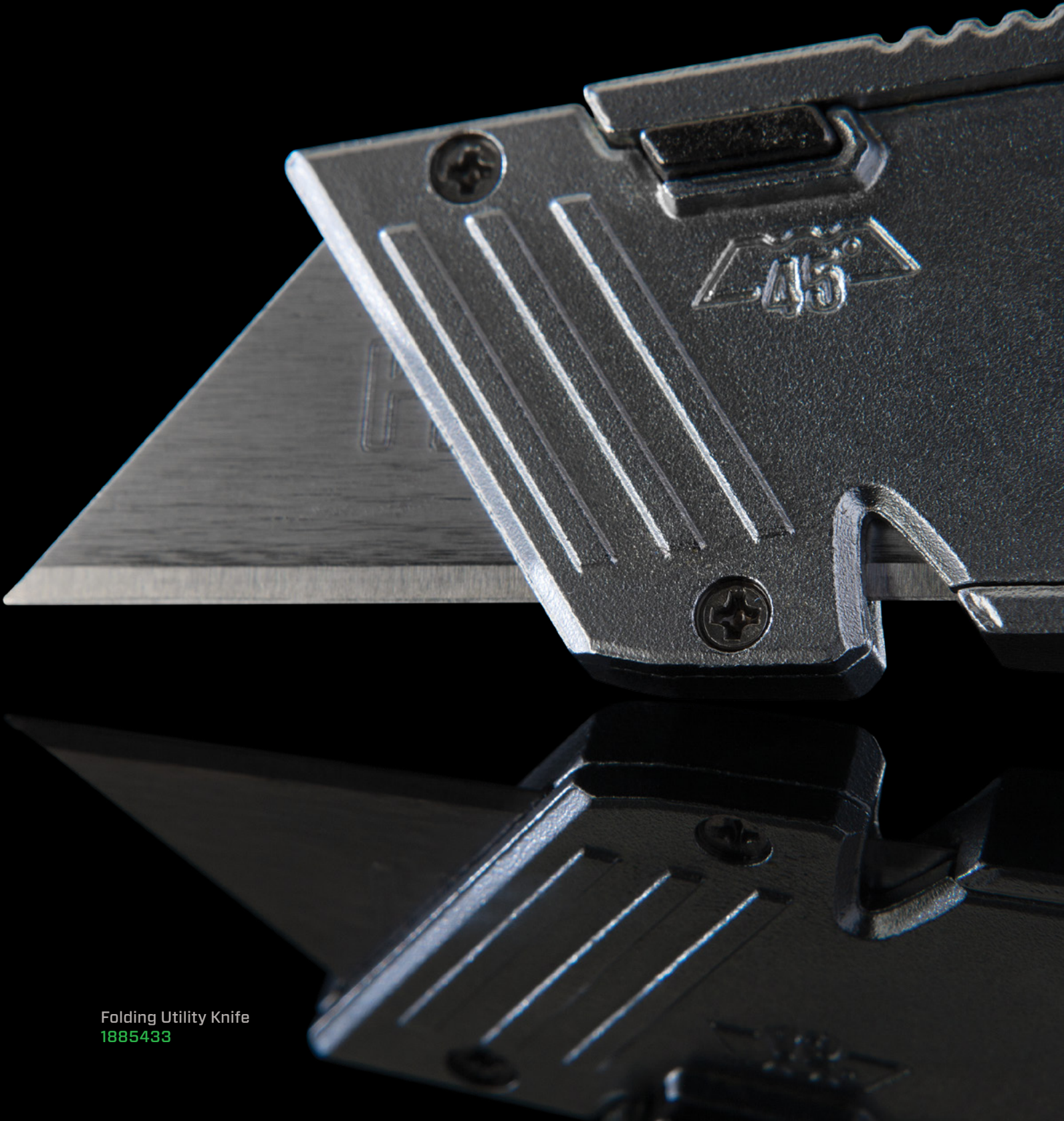
Self-Adjusting Wire Stripper
1885423



STAY SHARP ON THE JOB.



Sure, you have knives. But you don't have these knives. hilmer's new line of Utility Knives can definitely cut it. They're ruggedly durable and seriously sharp. Plus, they come with all the safety features you need to keep you in one piece.



Folding Utility Knife
1885433

RETRACTABLE UTILITY KNIFE

This is a great knife to have by your side. Quick cuts come standard with a unique trigger grip. Plus, you've got a few spare blades in the handle when you need them.



Rugged and Durable

An all-metal body increases life and durability.



Secure Storage

Conveniently store up to five extra blades in the handle.



Easy to Change

Change your blade quickly and easily without the use of a separate tool.



Easy to Cut

Get easier cutting on the pull with a unique trigger grip.

Product Specifications

Item Number	1885434
-------------	---------

Product Description	UKHR
---------------------	------

Dimensions

Length	1-3/4"
--------	--------

Width	1"
-------	----

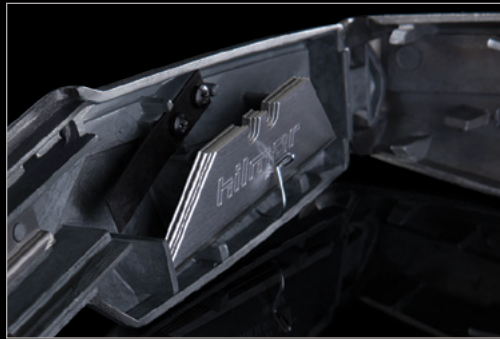
Height	6-3/4"
--------	--------

Weight	6 oz.
--------	-------

Utility Knife Blades

Item Number	1885432
-------------	---------

Product Description	UKB Utility Knife Blades 5PK
---------------------	---------------------------------



Store up to five blades in the handle.



Retractable Utility Knife
1885434

FOLDING UTILITY KNIFE

hilmor's Folding Utility Knife stands up to the test with an all-metal body. It's your new knife.



Rugged and Durable

An all-metal body increases life and durability.



Securely Locks Blade

A blade-locking mechanism prevents the blade from coming out during use.



One-handed Operation

A liner-lock for one-handed operation and extra safety.



Superior Versatility

A built-in wire-stripping channel for up to 10-gauge wire is there when you need it.



Belt Clip

A belt clip keeps knife close for easy access.

Product Specifications

Item Number	1885433
Product Description	UKHF
Dimensions	
Length	1-1/2"
Width	3/4"
Height	4"
Weight	5 oz.
Utility Knife Blades	
Item Number	1885432
Product Description	UKB Utility Knife Blades 5PK



You won't fold on the job. With a liner lock, this knife won't either. Until you want it to.



Folding Utility Knife
1885433

THE REWARD IS IN THE DETAIL.



If you like to set the bar high, you need service tools that do the same. These will help you tend to every last detail, so you can get the job done right.

INSPECTION MIRRORS

Leaks can't hide anymore with hilmor Inspection Mirrors. With handles that extend, the telescoping inspection mirrors truly do go above and beyond.

Product Specifications

Item Number	M-1	M-2	M-3	M-5
Product Descriptions	1-1/4" Circular Telescoping Mirror	2-1/4" Circular Telescoping Mirror	2-1/8" x 3-1/2" Rectangular Telescoping Mirror	1" x 2" Oval Telescoping Mirror
Handle Extends	6-1/4" to 18-1/4"	10" to 14"	11-1/4" to 15-1/4"	8" to 21"
Dimensions				
Length	10"	12-1/2"	14-1/2"	9.75"
Width	1/4"	1/4"	1/2"	0.75"
Height	2-1/2"	3-1/4"	4.00"	2.25"
Weight	3.2 oz.	2.2 oz.	3.8 oz.	3.2 oz.



FIN STRAIGHTENING TOOLS

A condenser should work as efficiently as you. These tools make it easy to remove debris and straighten fins.

Product Specifications

Item Number	T-100	T-101	T-300	T-400	T-412	T-417	T-418
Product Description	Fin Tool Kit	Fin Tool Kit	Fin Tool	Set of 6	Fin Comb	Fin Comb	Fin Comb
Sizes	8, 9, 10, 11, 12, 14 FPI	13, 15, 16, 17, 18, 20 FPI	8, 9, 10, 11, 12, 13, 14, 15, 16, 17, 18, 20 FPI	8 & 10, 9 & 15, 11 & 13, 12 & 14, 16 & 17, 18 & 20 FPI	12 & 14 FPI	16 & 17 FPI	18 & 20 FPI
Dimensions							
Length	5-3/4"	5-3/4"	12-1/4"	7-1/2"	8-3/4"	8-3/4"	8-1/2"
Width	2"	2"	4"	2-3/4"	2-1/4"	2-1/4"	2-1/4"
Height	1-1/2"	1-1/4"	1-1/2"	1-1/4"	1/2"	1/2"	1/2"



DEBURRING TOOL

Whether they're inside or outside, copper or plastic, hilmar Deburring Tool can smooth things over. Our Pocket Size Deburring Tool lets you put your silky-smooth signature on even the smallest pieces of tubing.

Product Specifications

Item Number	1891258
Product Description	DBURPS
Sizes	1/4" and up
Dimensions	
Length	5-1/2"
Width	3/8"
Height	3/8"
Weight	7 oz.



Pocket Size Deburring Tool
1891258

TUBE PREP BRUSHES

You do the job right or you don't do it at all. This tool lets you easily remove loose copper and other debris from joints so you can solder and braze with the best of them.



Rugged and Durable

High-carbon steel bristles and a plastic handle increase life and durability.



Quick Identification

Easy-to-read size markings make identification simple.

Product Specifications

Item Numbers	1891474	1891475	1891462
Product Descriptions	TPB12	TPB34	TPB1
Sizes	1/2"	3/4"	1"

Dimensions

Length	6-3/8"	6-3/8"	6-3/8"
Width	1-1/4"	1-1/4"	1-1/4"
Height	3/4"	1/2"	1"
Weight	1 oz.	1 oz.	1 oz.



1/2", 3/4" and 1"
Tube Prep Brushes
1891474, 1891475, 1891462

SERVICE WRENCHES

Smart features that save your knuckles and your time. Our Straight Service Wrench makes changing sizes quick and easy. Our Offset Service Wrench makes maneuvering around cramped spaces second nature. The reversible Ratchet Wrench has square openings of 1/4" and 3/16" on one end and 3/8" and 5/16" on the other end. And, when it comes to accessing liquid- and suction-based valves, reach for our Hex Key Adapter. It works on 3/16" and 5/16" hex valves.



Hex Key Adapter
1839046

Product Specifications

Hex Key Adapter

Item Number	1839046
Product Description	SWHKA
Hex Valve Sizes	3/16" and 5/16"

Dimensions

Length	1/2"
Width	2/5"
Height	2/5"
Weight	1 oz.

Product Specifications

Item Numbers			
	1839042	1839043	1839045
Product Descriptions			
	SWS Service 1/4" x 3/16" SQ 3/8" x 5/16" SQ	SWOS Offset 1/4" x 3/16" SQ 3/8" x 5/16" SQ	SWLR Service LR 1/2" x 9/16" Hex 3/16" x 1/4" SQ
Square Sizes			
	1/4", 3/16" 3/8", 5/16"	1/4", 3/16" 3/8", 5/16"	1/4", 3/16"
Hex Sizes			
	N/A	N/A	1/2", 9/16"
Accessories			
	1839046 SWHKA Service Hex Key Adapter works on 3/16" and 5/16" Hex Valves		
Dimensions			
Length	5-1/2"	5-1/4"	6-1/4"
Width	1/2"	3/4"	1/2"
Height	7/8"	7/8"	1"
Weight	3 oz.	3 oz.	5 oz.



Straight Service Wrench
1839042

Offset Service Wrench
1839043

LOCKING PLIERS PINCH-OFF TOOL

The hilmar Locking Pliers Pinch-Off Tool is rugged and durable - a lot like you. Made from high-grade, heat-treated alloy steel, this tool is built to handle whatever you throw at it. The pinch-off mechanism locks on to tubing so your hands are free to get the real job done.



Rugged and Durable

Pliers are built to last, manufactured from high-grade, heat-treated alloy steel for durability.



Added Versatility

Designed to pinch off and lock on to 1/8" to 5/8" diameter tubing, leaving both hands free to do other work.

Product Specifications

Item Number	1937673
Product Description	LPPOT
Sizes	1/8" to 5/8"

Dimensions

Length	7-1/4"
Width	2-1/4"
Height	1"
Weight	12 oz.



Locking Pliers Pinch-Off Tool
1937673

REFRIGERANT RECOVERY TOOL

Smart features that save refrigerant and time. Our Refrigerant Recovery Tool makes evacuation equipment quick and easy.



Added Convenience

Self-adjusting for 1/4" and 1/2" lines.



Secure Fit

Securely locks and seals.



Rugged and Durable

Stainless Steel Piercing Valve. Made from high carbon, heat treated steel jaws.

Product Specifications

Item Number	RRT100
Product Description	RRT

Dimensions

Length	1-1/2"
Width	5"
Height	11-1/2"
Weight	0.55 lbs.



Refrigerant Recovery Tool
RRT100

LIQUID CHARGER

Liquid low side charging adapter. For use with all CFC, HCFC and HFC refrigerants on 1/2 ton and larger units. 1/4" female SAE flare inlet , 1/4" male SAE flare outlet.



Less Work

Eliminates the need to heat the refrigerant.

Product Specifications

Item Number	LC500
Product Description	LC
Dimensions	
Length	4.4"
Width	1"
Height	1"
Weight	0.65 lbs.



Liquid Charger
LC500

NITROGEN PURGE TOOL

The hilmor Nitrogen Purge Tool is rugged and durable - a lot like you.



Regulates Nitrogen Flow

Designed to regulate flow with 50 psi inlet pressure. Maximum pressure of 200 psi.



Quick Change Dial

No flow indicator valve needed. Purge setting = 25-35 scfh @ 50 PSI, Braze setting = 3-6 scfh @ 50 PSI.

Product Specifications

Item Number	HMNPT01
Product Description	NPT
Dimensions	
Length	2"
Width	3"
Height	2"
Weight	1 lb.



Nitrogen Purge Tool
HMNPT01

STAY BRIGHT ON THE JOB.



WORK LIGHT

Just because you could do it with your eyes closed, doesn't mean you should have to. Bring light to the HVAC/R problems at hand so you can do what you do best, solve them.



Two Power Modes

1200 Lumens (3 Hrs)
600 Lumens (5 Hrs)



Lithium Ion Rechargeable Battery



Magnetic Stand for Secure Positioning



Adjustable Joints

MINI WORK LIGHT

A little light goes a long way when you're working under a tricky unit. Small but mighty, our Mini Work Light gives you 600 and 1200 lumens for dark and darker conditions.



Two Power Modes

600 Lumens (1.5 Hrs)
300 Lumens (3 Hrs)



Magnetic Base



Adjustable Joint For Different Angles



Rechargeable Li-Ion Battery

Product Specifications

Item Number	HMWL1200
-------------	----------

Product Description	WL1200
---------------------	--------

Dimensions

Length	7"
Width	7"
Height	8-1/2"
Weight	3.9 lbs.



Product Specifications

Item Number	HMMWL600
-------------	----------

Product Description	MWL600
---------------------	--------

Dimensions

Diameter	3"
Height	2"
Weight	0.3 lbs.



PORTABLE WORK LIGHT

You're always on the move but your light source must be steady. Designed to prevent shadows and hotspots, the Portable Work Light offers precise light dispersal for the perfect view of whatever moving target you're hitting.



Two Power Modes
1200 Lumens (4 Hrs)
600 Lumens (8 Hrs)



Wide Circular Beam



Secure Hold



Rechargeable Battery

Product Specifications

Item Number	HMPWL1200
-------------	-----------

Product Description	PWL1200
---------------------	---------

Dimensions

Length	10-1/4"
Width	2"
Height	1-1/2"
Weight	1.35 lbs.



PIVOTING WORK LIGHT

For light here, there and everywhere you want it. The Pivoting Work Light lets you shine light on the problems at hand ... without the use of your hands. Because let's face it, your hands are busy.



240 Lumen Array



Pivoting Work Light



**Magnetic Attachment Points
on Back and Base**



3 AA Batteries Included

Product Specifications

Item Number	HMPWL240
-------------	----------

Product Description	PWL240
---------------------	--------

Dimensions

Length	8-1/5"
Width	2-1/4"
Height	2"
Weight	9.6 oz.



COMPACT WORK LIGHT

Bright light. Small work space. Designed to fit in your pocket and stick to metal, you can see whatever you need to with ease when you have this little number.



150 Lumens Array



3 AAA Batteries Included



Rotating Hook for Hands-Free Use



Magnetic Base for Precise Positioning

POCKET WORK LIGHT

You need light and possibly a third hand. That's why we'll skip giving you another thing to hold. The Pocket Work Light lives and works right on your pocket to illuminate any and all things HVAC/R.



180 Lumens



180° Swivel Magnetic Clip



3 AAA Batteries Included

Product Specifications

Item Number HMCWL150

Product Description CWL150

Dimensions

Length 5-1/5"

Width 1-1/2"

Height 2-1/2"

Weight 1.0 oz.



Product Specifications

Item Number HMPWL180

Product Description PWL180

Dimensions

Length 6-1/4"

Width 1"

Height 3/4"

Weight 2.4 oz.



IN THE DARK, DIRTY AND DOWNRIGHT CRAMPED, YOU GOTTA KEEP IT TOGETHER.



We're not just revolutionizing your HVAC/R equipment, we're also retooling the way you store it. We offer a wide array of smart storage and transport solutions for all your valuable tools. It's another way we help you conquer from one job to the next. And keep your cool no matter the climate.

HVAC/R TOTE

The hilmer HVAC/R Tote is your go-to tool storage and transport solution. It includes 27 exterior and interior pockets, 18 bands and clips for your keys so you can store your tools safely and find them quickly.



Keep Organized

27 pockets and 18 bands.
14 exterior pockets and
13 interior pockets.



Rugged and Durable

Designed to last with
water-resistant bottom and
reinforced rivets.



Secure Storage

Stow your meter away safely
in the padded pocket in the
interior of the tote. Use the tape
measure clip, key clip and tape
holder loop to secure the rest of
the items you need.



Helps with the Heavy Lifting

This tote has room for multiple
tools and is tested up to
50 lbs. The padded shoulder
strap makes carrying more
comfortable.

Product Specifications

Item Number	1839078
Product Description	HT
Number of Pockets	
Interior	13
Exterior	14
Extra Features	Key Clip; Tape Loop; Shoulder Strap
Dimensions	
Length	7-1/2"
Width	7-1/2"
Height	13"
Weight	3.3 lbs.



HVAC/R Tote
1839078

BACKPACK TOOL BAG

The hilmer Backpack Tool Bag is your jobsite sidekick with 19 exterior and interior pockets. Its sturdy rubber, water-resistant bottom means rain or shine, the contents inside won't be damaged. And while it's spacious enough to hold up to 50 lbs., padded shoulder straps and a back air vent make hauling it a little more comfortable and leave your hands free to safely climb a ladder.



Secure Storage

Stow your meter away safely in either of the two padded zipper pockets on the exterior sides of the tote.



Superior Versatility

Hang your manifold from the bag's metal loop for easy transport to the jobsite.



Helps with the Heavy Lifting

This bag has room for multiple tools and is tested up to 50 lbs. The padded shoulder straps and air vent back make carrying more comfortable.

Product Specifications

Item Number 1839080

Product Description BKB

Number of Pockets

Interior 11

Exterior 8

Extra Features

Clear Vinyl ID Window Pocket; Shoulder Strap; Double-grip Handles; Steel "U" Ring; Airflow Ventilator Pads

Dimensions

Length 6"

Width 14"

Height 16"

Weight 4.5 lbs.



Backpack Tool Bag
1839080



19 exterior and interior pockets allow you to store tools safely and find them quickly.



A metal loop gives you an easy way to transport your manifold.



Two padded, zippered side pockets provide safe storage for your meter.

TOOL CENTER BAG

The hilmer Tool Center Bag is your total tool storage solution. It includes 24 exterior and interior pockets and three zippered pouches so you can store your tools safely and find them quickly.



Keep Organized

24 pockets and three zippered pouches.



Secure Storage

Stow your meter away safely in either of the two padded pockets on the exterior sides of the tote.



Helps with the Heavy Lifting

This bag has room for multiple tools and is tested up to 50 lbs. The padded shoulder strap makes carrying more comfortable.



Rugged and Durable

Designed to last with a hard plastic, water-resistant bottom and a padded aluminum carrying handle.

Product Specifications

Item Number 1839079

Product Description TCB

Number of Pockets

Interior 13; 18 Tool Loops

Exterior 11

Extra Features

Clear Vinyl ID Window Pocket; Shoulder Strap; Cover Flap

Dimensions

Length 13-1/2"

Width 8-1/2"

Height 9"

Weight 4.5 lbs.



Three zippered pouches and two padded side pockets provide safe storage for your meter.



Tool Center Bag
1839079

HVAC/R REFRIGERANT TANK & UTILITY BACKPACK

Give yourself a hand with the Utility Backpack. Comfortably carry refrigerant or recovery tanks, or up to 50 lbs. of whatever the job calls for.



Superior Versatility

Can carry up to 30-lb. refrigerant or recovery cylinders and serves as a knapsack to transport other materials to and from the jobsite.



Secure Transport

A drawstring with a cord lock and flap with latch securely hold your materials in place during transport.



Stay Organized

8-carabiner loops, a see-through pocket to display OSHA refrigerant labels and a pocket keep you together.



Helps with the Heavy Lifting

Padded shoulder straps and back pads allow you to comfortably carry up to 50 lbs.



Rugged and Durable

Designed to last with heavy-duty nylon thread, and puncture and abrasion-resistant nylon fabric.

Product Specifications

Item Number 1891628

Product Description HVACBP

Extra Features

External Pocket; See-Through Pocket; 8 Carabiner Loops

Dimensions

Length 20"
Width 12"
Height 12"
Weight 2.4 lbs.



Designed to carry 30-lb. refrigerant and recovery cylinders.



Serves as a knapsack to transport other materials.



HVAC/R CARRYING STRAP

Let this Strap do some of your lifting. Clip on and carry refrigerant or recovery tanks comfortably and easily.



Rugged and Durable

Heavy-duty nylon fabric and slip-resistant padding helps prevent the strap from sliding.



Less Wasted Time

Steel carabiners easily clip to carry refrigerant or recovery cylinders and other essential materials to save trips and give you an extra arm.



Helps with the Heavy Lifting

Shoulder strap is designed and tested to hold up to 50 lbs.

Product Specifications

Item Number	1891625
Product Description	HVACSCS
Dimensions	
Length	50-1/2"
Width	3-3/4"
Height	1/2"
Weight	14 oz.



Easily hooks to refrigerant and recovery cylinders.



Attach the HVAC/R Carrying Strap to the two durable hoist points on all hilmer Vacuum Pumps.



HVAC/R Carrying Strap
1891625

ZIPPER POUCH

The hilmor Zipper Pouch is your best bet for keeping track of all the small stuff on the jobsite - from small tools and accessories to receipts and other paperwork.



Keep Organized

The hilmor Zipper Pouch can conveniently fit many hilmor tools, including the Punch Swage Set or Dual Readout Thermometer with two Thermocouple Clamps.



Rugged and Durable

Designed with an inner liner to protect from water damage and a rivet on the outside so it can be clipped where it's needed.

Product Specifications

Item Number	1839081
Product Description	ZP
Number of Pockets Interior	1
Dimensions	
Length	10-1/2"
Width	1/8"
Height	7"
Weight	3 oz.



Zipper Pouch
1839081

HVAC/R GENERAL PURPOSE GLOVES

No matter what the task, get a grip and protect your hands with these ruggedly reinforced gloves made to take on any job.



Rugged and Durable

Stands up to HVAC/R applications with a breathable-fabric design, featuring a reinforced thumb, palm and fingertips to increase life and durability.



Extra Comfort

A wrist strap easily adjusts for comfort while a form-fitting design provides fit and flexibility.

Product Specifications

Item Numbers	1891606	1891607	1891624
Product Descriptions	GLOVEHVACM	GLOVEHVACL	GLOVEHVACXL
Sizes	MED	LG	XL
Dimensions			
Length	9-3/4"	9-7/8"	10"
Width	4-3/8"	4-7/16"	4-5/8"
Height	1/2"	1/2"	1/2"
Weight	5 oz.	5 oz.	5 oz.



HVAC/R General Purpose Gloves
1891624

HVAC/R SHEET METAL GLOVES

We don't need to tell you sheet metal can be sharp. Shield your hands from cuts with these gloves that are as tough as they are comfortable.



Rugged and Durable

Stands up to sheet metal with cut-resistant fabric featuring a reinforced thumb, palm and fingertips to increase life and durability.



Extra Comfort

A wrist strap easily adjusts for comfort while a form-fitting design provides fit and flexibility.

Product Specifications

Item Numbers	1891463	1891469	1891592
Product Descriptions	GLOVESMM	GLOVESML	GLOVESMXL
Sizes	MED	LG	XL
Dimensions			
Length	9-3/4"	9-7/8"	10"
Width	4-3/8"	4-7/16"	4-5/8"
Height	1/2"	1/2"	1/2"
Weight	5 oz.	5 oz.	5 oz.



HVAC/R Sheet Metal Gloves
1891592

THESE TOOLS ARE BUILT FOR HVAC/R. JUST LIKE YOU.



hilmer's HVAC/R Starter Kit includes some of the most revolutionary new tools on the market. Tools to help you handle superheat and subcool with no sweat. Tools to help you flare and swage tubes without needing a third arm. All with the goal of helping you get in, get out and get on to the next job. Not to mention, get your foot in the door.

HVAC/R STARTER KIT

Get started on the right foot with a few of hilmor's most forward-thinking tools.

Dual Readout Thermometer 1839106

hilmor's Dual Readout Thermometer is the industry's first to offer two digital readouts to help simplify the calculation of superheat and subcool.

2-Valve Aluminum Manifold 1839134

This ruggedly durable Aluminum Manifold features a forged aluminum body and high-impact gauge boots.

60" Hose Set of 3 1839153

Our hoses are bulked up with an extra abrasion-resistant layer and designed to work with the newest high-pressure refrigerants.

Quick-Engage Flare and Swage 1838947

Finally, a flaring tool that doesn't require a third arm. Two hands are all it takes to flare or swage in seconds.

Tri-Tube Bender 1839027

From start to final bend, the hilmor Tri-Tube Bender has you covered. Color-coded sizing makes it simple to bend 1/4", 3/8" and 1/2" tubes.

Service Wrenches 1839042, 1839046

Smart features that save your knuckles and your time. Plus, a Hex Key Adapter for liquid- and suction-based valves.

Product Specifications

Item Number	1890995
Product Description	KITHVACR
Dimensions	
Length	20"
Width	15-1/4"
Height	16-1/2"
Weight	21.7 lbs.

Folding Hex Key Set 1839048

Get full socket contact with our slip-resistant Folding Hex Key Set. Sizes include 5/64" to 1/4".

Inspection Mirror 1839051

Leaks can't hide anymore. With a handle that extends from 7-3/4" to 21-1/2", this telescoping mirror goes above and beyond.

3" Quick-Change Magnetic Nut Driver 1839054

Don't get driven nuts. Just drive them. This Nut Driver lets you quickly switch between 1/4" and 5/16", the two most common sizes.

9 in 1 Multi-Tool 1839053

Tackle any on-the-job challenge with square, hex and Phillips bits. Not to mention a handy valve core remover.

Backpack Tool Bag 1839080

The hilmor Backpack Tool Bag includes 19 exterior and interior pockets. Plus, its sturdy, water-resistant bottom holds up in any climate.



HVAC/R Starter Kit
1890995

LIMITED WARRANTY

At hilmor, we have put the highest priority on thoughtful product design and manufacturing quality. That is why we guarantee our products to be free of material and workmanship defects for a period of time from purchase (see chart below). We get the tough conditions in which you work and have designed products to stand up to those challenges. Unfortunately, this warranty does not apply to product that has been damaged as a result of improper maintenance, accident or other misuse, or which fails to operate due to normal wear and tear.

Product Line	Time Period from Purchase
Power Tool Accessories, Deburring Tools, Gloves, Drill Bits, Tube Brushes, Cutting Wheels and Blades	Limited 90 Days
Refrigeration Scales	Limited One Year
Analog Gauges	Limited One Year
Recovery Machine	Limited One Year
Hoses	Limited One Year
Valve Core Removal Tools	Limited One Year
Vacuum Gauges	Limited Two Years
Vacuum Pumps	Limited Two Years
Digital Adjustable Torque Wrench	Limited Two Years
Electronics	Limited Three Years
Manifold Bar	Limited Lifetime
Bending Tools	Limited Lifetime
Flaring Tools	Limited Lifetime
Swaging Tools	Limited Lifetime
Tubing Cutters	Limited Lifetime
Sheet Metal and Duct Tools	Limited Lifetime
Driving Tools	Limited Lifetime
Pliers, Wrenches and Wire Strippers	Limited Lifetime
Utility Knives	Limited Lifetime
Service Tools	Limited Lifetime
Fin Tools	Limited Lifetime
Inspection Mirrors	Limited Lifetime
Tool Storage Bags	Limited Lifetime

All products, that are subject to warranty claims should be returned to the place of purchase along with proof of purchase showing the date of purchase. The distributor from whom the product was purchased will contact hilmor for next steps, which could include field scrap or return to the factory for analysis, and work with you on a repair, replacement or credit. Please contact hilmor Technical Services for general technical questions related to products or this warranty policy: **1-800-995-2222**.

HILMOR MAKES NO OTHER WARRANTIES, EXPRESS OR IMPLIED, CONCERNING THE PRODUCT OR THE MERCHANTABILITY OR FITNESS THEREOF FOR ANY PURPOSE. IN NO EVENT SHALL HILMOR AND ITS AFFILIATES, SUCCESSORS AND ASSIGNS) BE LIABLE FOR INCIDENTAL, CONSEQUENTIAL OR PUNITIVE DAMAGES (OR LOST PROFITS), REGARDLESS OF THE NATURE OF THE CLAIM.

PRESSURE – TEMPERATURE CHART

ALL PRESSURES SHOWN ARE IN PSIG; RED PRINT = VACUUM (INCHES OF MERCURY)

F	R-12	R-22	R-134A	R-404A		R-407C		R-410A	R-502	C
				Vapor	Liquid	Vapor	Liquid			
-40	11	1	15	5	4	3	4	12	4	-40
-35	8	3	13	8	7	5	1	15	7	-37
-30	6	5	10	11	10	8	2	19	9	-34
-25	2	7	7	14	13	11	4	23	12	-32
-20	1	10	4	17	16	14	7	27	15	-29
-15	2	13	1	21	19	18	9	32	19	-26
-10	5	17	2	25	23	21	13	37	23	-23
-5	7	20	4	29	28	25	16	43	27	-21
0	9	24	7	34	32	30	20	49	31	-18
5	12	28	9	39	37	35	24	55	36	-15
10	15	33	12	45	42	40	28	62	41	-12
15	18	38	15	51	48	46	33	70	47	-9
20	21	43	18	57	55	52	38	78	52	-7
25	25	49	22	64	61	58	44	87	59	-4
30	29	55	26	71	68	65	50	97	66	-1
35	33	62	30	79	76	73	56	107	73	2
40	37	69	35	97	84	81	63	118	81	4
45	42	76	40	106	93	89	71	130	89	7
50	47	84	46	116	103	98	79	142	97	10
55	52	93	51	127	113	108	87	155	107	13
60	58	102	58	138	123	118	97	170	116	16
65	64	111	64	150	135	129	106	185	127	18
70	70	121	71	163	147	141	117	201	138	21
75	77	132	79	176	159	153	128	217	149	24
80	84	144	87	190	173	166	140	235	161	27
85	92	156	95	205	187	180	153	254	174	29
90	100	168	104	221	202	195	166	274	187	32
95	108	182	114	237	218	210	180	295	201	35
100	117	196	124	255	234	226	195	317	216	38
105	127	211	135	273	252	243	210	340	232	41
110	136	226	147	292	270	261	226	365	248	43
115	147	243	159	313	289	280	243	391	265	46
120	158	260	171	318	310	300	261	418	283	49
125	169	278	185	339	331	321	280	446	301	52
130	181	297	199	362	353	342	300	476	321	54
135	194	317	214	385	377	365	321	507	341	57
140	207	337	229	410	401	389	342	539	363	60
145	220	359	246	436	426	412	365	573	391	63
150	234	382	263	463	453	438	389	608	415	66

hilmor[®]

RETOOL + CONQUER[™]



3039 Premiere Parkway, #600
Duluth, GA 30097
1-800-995-2222
hilmor.com

© 2021 hilmor

DOC165894

H1026I