



3300 Brother Boulevard, Memphis, TN 38133

+1.877.826.9045
www.kele.com



insidesales@kele.com



TRANSFORMERS



PTR175/180/300 □□□□□

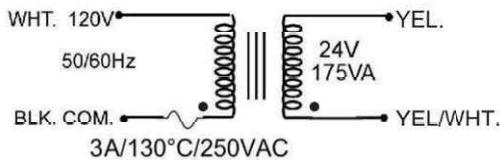
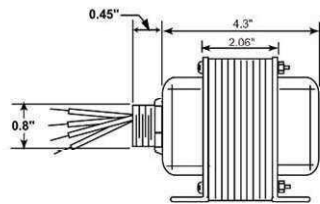
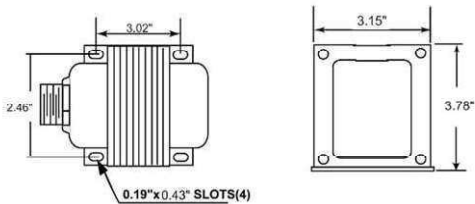
SPECIFICATIONS

VA Rating: 175/180/300
Wire Length: 8" Typical w/ .5" Strip
Frequency: 50/60 Hz
Mounting: Foot-Single/ Foot-Double threaded hub
Over Current Protection: Circuit breaker
Dimensions: As shown in schematics

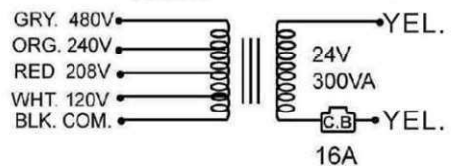
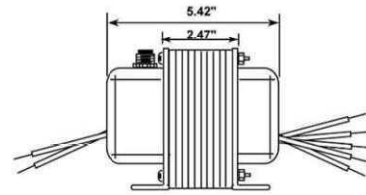
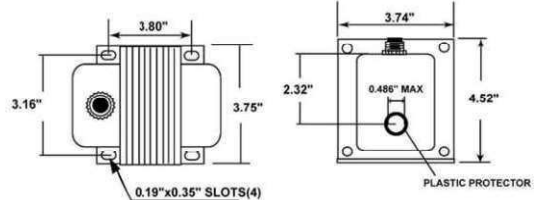
Operating Temperature: -30 to 140° F
MTBF: 100,000 Hours @ 77° F
Construction: Split-bobbin
Approvals: UL5085-2 Class 1, RoHS, cULus Listing: E524421

MOUNTING SPECS AND WIRING

PTR175SASHCB



PTR180MAFCB



PTR300MAFCB

ORDERING INFORMATION

- Transformers ≤100 VA are UL 5085-3, Class 2 listed.
- Transformers ≥50 VA are with a Circuit-Breaker.

| Kele Transformers | | | | | |
|-------------------|--------------|------------------------|-----------|-----------------|-------------------------|
| Rating | Part Number | Primary | Secondary | Mounting | Over Current Protection |
| 20VA | PTR20TADHI | 277-240-208-120VAC | 24VAC | Foot-Double Hub | Inherent |
| | PTR20SASHI | 120VAC | 24VAC | Foot-Single Hub | Inherent |
| | PTR20XASHI | 24VAC | 24VAC | Foot-Single Hub | Inherent |
| 40VAC | PTR40TADHI | 277-240-208-120VAC | 24VAC | Foot-Double Hub | Inherent |
| | PTR40SASHI | 120VAC | 24VAC | Foot-Single Hub | Inherent |
| | PTR40SADHI | 120VAC | 24VAC | Foot-Double Hub | Inherent |
| 50VA | PTR50MADHCB | 480-277-240-208-120VAC | 24VAC | Foot-Double Hub | CB |
| | PTR50TADHCB | 277-240-208-120VAC | 24VAC | Foot-Double Hub | CB |
| | PTR50SASHCB | 120VAC | 24VAC | Foot-Single Hub | CB |
| 75VA | PTR75MADHCB | 480-277-240-208-120VAC | 24VAC | Foot-Double Hub | CB |
| | PTR75MASHCB | 480-277-240-208-120VAC | 24VAC | Foot-Single Hub | CB |
| | PTR75SASHCB | 120VAC | 24VAC | Foot-Single Hub | CB |
| 100VA | PTR100MADHCB | 480-277-240-208-120VAC | 24VAC | Foot-Double Hub | CB |
| | PTR100MASHCB | 480-277-240-208-120VAC | 24VAC | Foot-Single Hub | CB |
| | PTR100SASHCB | 120VAC | 24VAC | Foot-Single Hub | CB |
| 150VA | PTR150MADHCB | 480-277-240-208VAC | 120VAC | Foot-Double Hub | CB |
| | PTR150SASHCB | 120VAC | 24VAC | Foot-Single Hub | CB |
| | PTR150SADHCB | 120VAC | 24VAC | Foot-Double Hub | CB |
| 175VA | PTR175SASHCB | 120VAC | 24VAC | Foot-Single Hub | CB |
| 180VA | PTR180MAFCB | 480-277-240-208-120VAC | 24VAC | Foot | CB |
| 300VA | PTR300MAFCB | 480-277-240-208-120VAC | 24VAC | Foot | CB |