



# PRESSURE

## DIFFERENTIAL PRESSURE SWITCH A2G-40 SERIES

### DESCRIPTION

The **Wika A2G-40 Series differential pressure switch** is useful for DP and clogged filter monitor across filter banks; overpressure detection in rooms; and air flow proving for direct fire AHU's or duct heaters. The clearly visible adjustment knob makes it easy to set the switchpoint without tools. This SPDT switch can be set up as a N.O. or N.C. contact. It features a robust housing in a compact design.

### FEATURES

- *Adjustment knob enables easy switch point setting*
- *Switch can be set up as N.O. or N.C.*
- *Compact size*

NEW!

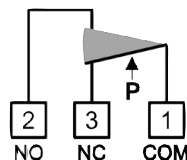


A2G-40



### WIRING

Micro Switch  
One (1) SPDT (single pole double throw)



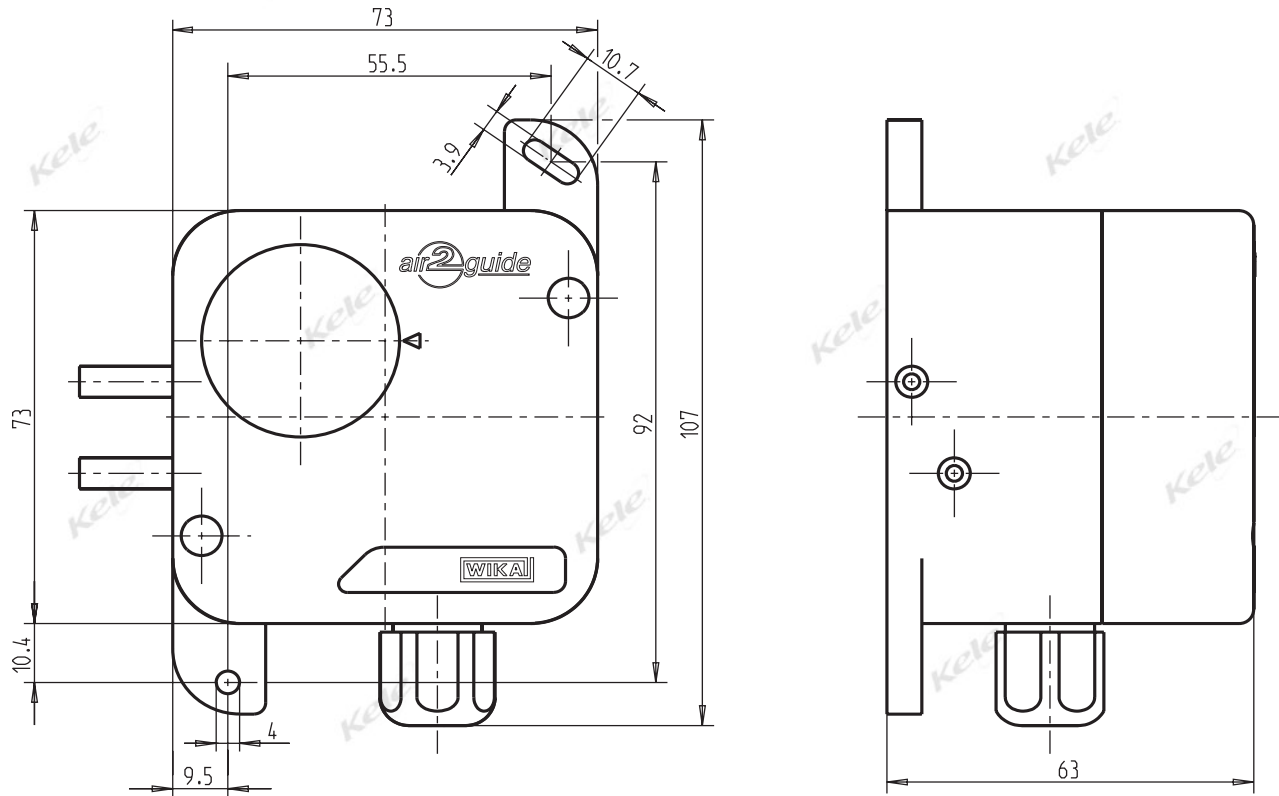
1-3 opens / 1-2 closes on reaching the set point (differential pressure)

### SPECIFICATIONS

<b>Contact Rating</b>	2.0 A @ 250 VAC (with inductive load)	<b>A2G40-S00-7C-EL</b>	0.40 to 6.0" W.C. (100 to 1500 Pa)
<b>Contact Type</b>	SPDT	<b>A2G40-S00-7C-EM</b>	2.0 to 18.0" W.C. (500 to 4500 Pa)
<b>Differential</b>		<b>Media Compatibility</b>	air and other non-combustible gases
<b>A2G40-S00-7C-EH</b>	0.04" W.C. (10 Pa)	<b>Operating Temperature</b>	-40° to 185°F (-40° to 85°C)
<b>A2G40-S00-7C-EI/EJ</b>	0.08" W.C. (20 Pa)	<b>Mounting</b>	Enclosure positioned in any vertical plane
<b>A2G40-S00-7C-EK</b>	0.12" W.C. (30 Pa)	<b>Enclosure</b>	NEMA 3
<b>A2G40-S00-7C-EL</b>	0.30" W.C. (80 Pa)	<b>Process Connection</b>	Hose barb nozzles (ABS) for 3/16" and 1/4" hose ID
<b>A2G40-S00-7C-EM</b>	0.70" W.C. (180 Pa)	<b>Wiring Terminations</b>	Screw terminals, PG-gland M16
<b>Operating Pressure</b>	200" W.C. (49.8 kPa)	<b>Approvals</b>	CE, IP54 NEMA 3
<b>Measurement Range</b>		<b>Weight</b>	0.3 lb (0.15 kg)
<b>A2G40-S00-7C-EH</b>	.08 to .80" W.C. (20 to 200 Pa)	<b>Warranty</b>	2 years
<b>A2G40-S00-7C-EI</b>	0.12 to 1.2" W.C. (30 to 300 Pa)		
<b>A2G40-S00-7C-EJ</b>	0.12 to 2.0" W.C. (30 to 500 Pa)		
<b>A2G40-S00-7C-EK</b>	0.16 to 2.4" W.C. (40 to 600 Pa)		



### DIMENSIONS



### ORDERING INFORMATION

MODEL	DESCRIPTION
A2G40-S00-7C-EH	Differential pressure switch, .08 to .8 in WC
A2G40-S00-7C-EI	Differential pressure switch, 0.12 to 1.2 in WC
A2G40-S00-7C-EJ	Differential pressure switch, 0.12 to 2.0 in WC
A2G40-S00-7C-EK	Differential pressure switch, 0.16 to 2.4 in WC
A2G40-S00-7C-EL	Differential pressure switch, 0.40 to 6.0 in WC
A2G40-S00-7C-EM	Differential pressure switch, 2.0 to 18.0 in WC

RELATED PRODUCTS		PAGE
T-101	1/4" OD black poly tubing, 1 coil, 250 ft (76 m)	901
A-308-K	Duct static pressure fitting, 1/4" barb	1113
A-302-K	Duct static pressure tip, 1/4" barb	1113
A-301-K	Duct static pressure tip, 1/4" compression	1113
A-345-K	Flange mounting kit (1 required for each A-301-K or A-302-K)	1113