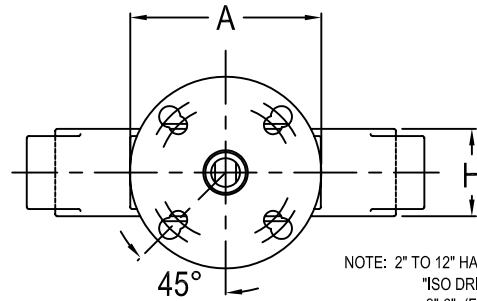


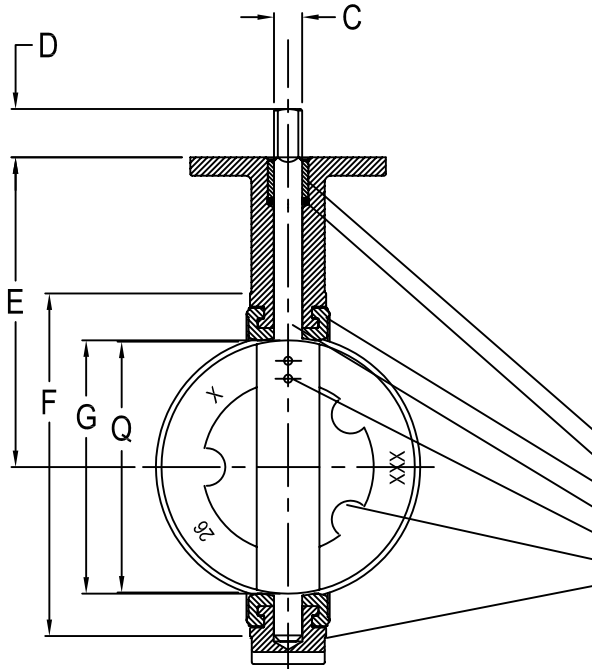
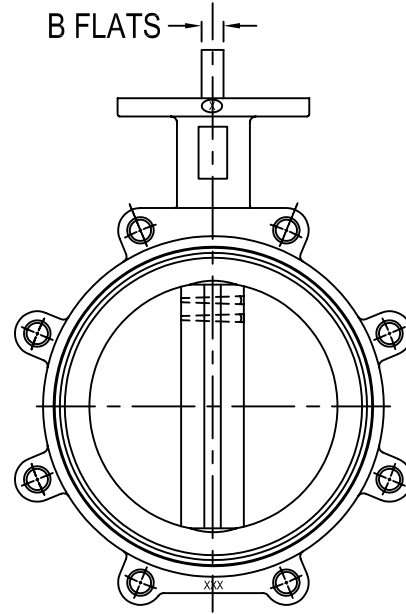
**\*ATTENTION\*** PLEASE CHECK THE ULTRAFLO WEBSITE AT [www.ultraflovalve.com](http://www.ultraflovalve.com) TO ENSURE YOU HAVE THE MOST RECENT COPY OF THIS DOCUMENT

**NOTES:**

1. ALL DIMENSIONS IN INCHES
2. VALVE WITH FULLCUT DISC CARRIES A PRESSURE RATING OF 250 P.S.I.
3. VALVE O.D. AND FLANGE BOLT CIRCLE MUST SHARE COMMON CENTER LINE.
4. Q DIMENSION: IS THE MINIMUM FLANGE OR PIPE I.D. TOLERABLE FOR PROTECTION OF DISC SEALING EDGE WHILE OPERATING BETWEEN FLANGES.
5. SEE CATALOG AUTOMATION FOR INTERCHANGEABILITY OF TOP PLATE MOUNTING AS TO ULTRAFLO VALVE OPERATORS.
6. BOTH TAPER PINS SHALL BE SET WITH THE LARGE END .04±.015 BELOW THE SURFACE OF DISC. THE EDGE OF THE HOLES SHALL BE PEENED OVER TO PROVIDE POSITIVE PIN RETENTION.



NOTE: 2" TO 12" HAVE ADDITIONAL "ISO DRILLING".  
2"-6" (F7)  
8"-12" (F10 & F12)



COMPONENT	NUMBER	MATERIAL
STEM BUSHING	1	ACETAL
STEM SEAL	1	BUNA-N
BONDED SEAT	1	FOOD GRADE EPDM AND BUNA-N
STEM	1	TYPE 416 STAINLESS STEEL, A582
PIN TAPER #4 X 1.56 long	1	17-4 A564, TYPE 630
DISC	1	316 SS, ALUM BRONZE OR DUCTILE IRON
BODY	1	POLYESTER COATED CAST IRON A126

**VALVE DIMENSIONS**

SIZE	VALVE DIMENSIONS											TOP PLATE DRILLING						LUG DATA		
	A	B	C	D	E	F	G	H	Q	KEY WAY	WT. LBS	ISO DRILLING		STD DRILLING		LUG DATA				
												B. CIRCLE	HOLES	HOLE DIA.	B. CIRCLE	HOLES	HOLE DIA.	B. CIRCLE	HOLES	TAP
2	4.000	.375	.563	1.250	5.500	3.690	2.000	1.620	1.320	N/A	7.000	2.760	4	.375	3.250	4	.440	4.750	4	.625-11UNC
2.5	4.000	.375	.563	1.250	6.000	4.190	2.250	1.750	1.910	N/A	8.000	2.760	4	.375	3.250	4	.440	5.500	4	.625-11UNC
3	4.000	.375	.563	1.250	6.300	4.880	3.000	1.750	2.550	N/A	9.000	2.760	4	.375	3.250	4	.440	6.000	4	.625-11UNC
4	4.000	.438	.625	1.250	7.000	6.060	4.000	2.000	3.570	N/A	15.000	2.760	4	.375	3.250	4	.440	7.500	8	.625-11UNC
5	4.000	.500	.750	1.250	7.500	7.120	5.000	2.120	4.630	N/A	20.000	2.760	4	.375	3.250	4	.440	8.500	8	.750-10UNC
6	4.000	.500	.750	1.250	8.000	8.120	5.750	2.120	5.450	N/A	23.000	2.760	4	.375	3.250	4	.440	9.500	8	.750-10UNC
8	6.000	.625	.875	1.250	9.500	10.500	7.750	2.500	7.450	N/A	42.000	4.020	4	.438	5.000	4	.560	11.750	8	.750-10UNC
10	6.000	N/A	1.125	2.000	10.750	12.750	9.750	2.500	9.530	.250 X .250	66.000	4.020	4	.438	5.000	4	.560	14.250	12	.875-09UNC
12	6.000	N/A	1.125	2.000	12.250	14.880	11.750	3.000	11.470	.250 X .250	88.000	4.020	4	.438	5.000	4	.560	17.000	12	.875-09UNC
14	5.900	N/A	1.380	2.000	13.620	16.940	13.250	3.000	13.040	.390 X .390	114.000	N/A	N/A	N/A	4.920	4	.560	18.750	12	1.00-08UNC
16	5.900	N/A	1.380	2.000	14.750	19.060	15.250	4.000	14.850	.390 X .390	166.000	N/A	N/A	N/A	4.920	4	.560	21.250	16	1.00-08UNC
18	8.300	N/A	1.970	2.500	16.000	21.120	17.250	4.250	16.850	.390 X .470	226.000	N/A	N/A	N/A	6.500	4	.810	22.750	16	1.125-7UNC
20	8.300	N/A	1.970	2.500	17.250	23.250	19.250	5.000	18.730	.390 X .470	305.000	N/A	N/A	N/A	6.500	4	.810	25.000	20	1.125-7UNC

ZONE	REV	DATE	BY	APP'D	ECN	DESCRIPTION
B2	2	07/21/09	DSS	CJH	318	CHGD FROM NON-FOOD GRADE SEAT
A4	1	07/06/07	DSS	CJH		REMOVED "NOT AVAILABLE" NOTE

**ultraflo** Ultraflo Corporation  
A Subsidiary of Bray International, Inc.

#8 Trautman Ind. Dr.  
Ste. Genevieve, Mo.  
63670 800-950-1762

DRAWN BY	NAME	DATE	2" TO 20" 522 SERIES VALVE
CHECKED	DSS	04/30/07	
	CJH	04/30/07	

PART: 522 VALVE LUG BODY, DISCSTEM  
EPDM OR BUNA-N BONDED SEAT

SCALE: NONE DWG: 500-522-3