



CONTROL VALVES

BUTTERFLY VALVES 522 SERIES

DESCRIPTION

The **522 Series** resilient seated butterfly valves are available in 2"-20" sizes. Economical and designed to meet today's HVAC and industrial process requirements, they come standard with full lugged bodies, aluminum bronze discs, 416 stainless steel stems, and EPDM seats. The valves come assembled with electric, pneumatic, or manual operators and are ready to install.

4

FEATURES

- *High pressure pneumatic actuators are rack and pinion driven and available in both double acting and spring return designs*
- *High torque industrial grade electric actuators are available in modulating or on/off configurations; spring return fail-safe operation also available*
- *High torque non-spring return industrial grade electric actuators are waterproof (NEMA4, 4X, 6 and IP67) and come standard with heaters*
- *Valve discs are spherically machined and hand polished for bubble tight shut off, minimum torque, and long life*
- *Unique tongue and groove seat design is designed to seal with slip on or weld neck flanges*
- *The bonded in seat design totally encases the valve interior to isolate the body from line media*
- *Stem packing gland is a self-adjusting design and gives positive sealing in both directions, preventing external substances from entering the stem bore*

CONTROL VALVES



522-05-H2X-0



522-05-E2X-0



522-03-KMSC-0

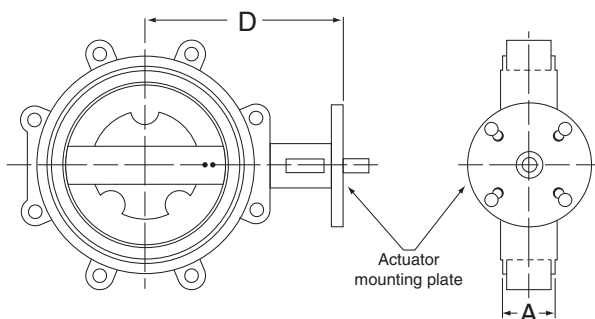
COMMON SPECIFICATIONS

Size	2" to 20" full-lug bodies	Supply Air Pressure	Pneumatic high pressure (HP): 80-140 psi; Pneumatic low pressure (P): 20-25 psi
Mounting Flange	ANSI 125/150 lug style flanges	Air Connections	Pneumatic high pressure (HP): 1/4" FNPT; Pneumatic low pressure (P): barb fittings for 5/32" or 1/4" OD poly tubing
Maximum Closeoff Pressure	100 psid (689 kPa)	Manual Override	KA actuators: pushbutton; KAS actuators: hex wrench crank; 200/200S actuators on 6" to 10" valves: 10-position lever operator; 200/200S actuators on 8" to 20" valves: worm-gear operator
Maximum Pressure	200 psig (1379 kPa)	Operating Temperature	Pneumatic high pressure (HP): -40° to 200°F (-40° to 95°C); Pneumatic low pressure (P): -4° to 176°F (-20° to 80°C); Electric KA: -5° to 140°F (-20° to 60°C); Electric KAS: -40° to 140°F (-40° to 60°C); Electric 200/200S: -21° to 148°F (-29° to 64°C)
Materials Of Construction	Valve body: polyester coated cast iron, A 126 Class B; seat: EPDM bonded in for dead end service; shaft and taper-pin: Type 416/17-4 pH; disc: aluminum bronze; weather seal: Buna-N; bearings: Acetol	Enclosure Rating	Electric KA/KAS: NEMA 2; Electric 200/200: NEMA 4/4X
Media Compatibility	Hot or chilled water, ethylene glycol	Warranty	2 years
Media Temperature Range	-40° to 250°F (-40° to 120°C)		
Supply Voltage	Electric KA/KAS actuators: 24 VAC/VDC; Electric 200/200S actuators: 120 VAC		
Control Signal	Pneumatic modulating: 3-15 psi with positioner; Pneumatic 2-position low pressure (P): 0/25 psig; Pneumatic high pressure (HP): 24 VAC 3-way solenoid valve; Electric KA/KAS: 2-pos. 24 VAC, proportional 0-10 VDC, 4-20 mA; Electric 200/200S: 2-pos. 120 VAC, proportional 4-20 mA		



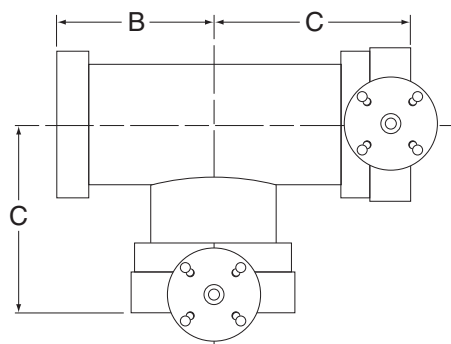
VALVE DIMENSIONS in (cm)																		
PORT	DIM.	2"	2.5"	3"	4"	5"	6"	8"	10"	12"	14"	16"	18"	20"				
2-way	A	1.62 (4.1)	1.75 (4.5)	1.75 (4.5)	2 (5.1)	2.12 (5.4)	2.12 (5.4)	2.5 (6.4)	2.5 (6.4)	3 (7.6)	3 (7.6)	4 (10.2)	4.25 (10.8)	5 (12.7)				
	B	4.5 (11.4)	5 (12.7)	5.5 (14)	6.5 (16.5)	7.5 (19.1)	8 (20.3)	9 (22.9)	11 (28)	12 (30.5)	14 (35.6)	15 (38.1)	16.5 (41.9)	18 (45.7)				
3-way	C	6.12 (15.6)	6.75 (17.2)	7.25 (18.5)	8.5 (21.6)	9.62 (24.5)	10.12 (25.7)	11.5 (29.21)	13.5 (34.3)	15 (38.1)	17 (43.2)	19 (46.3)	20.75 (52.7)	23 (58.4)				
	D	5.5 (14)	6 (15.3)	6.3 (16)	7 (17.8)	7.5 (19.1)	8 (20.3)	9.5 (24.2)	10.75 (27.4)	12.25 (31.2)	13.62 (34.6)	14.75 (37.5)	16 (40.7)	17.25 (43.8)				
Height without Actuator																		
Weight 2-way	lb (kg)	7 (3.2)	8 (3.7)	9 (4.1)	15 (6.8)	20 (9.1)	23 (10.5)	42 (19.1)	66 (30)	88 (40)	114 (51.8)	166 (75.3)	226 (102.6)	305 (138.4)				
Weight 3-way	lb (kg)	46 (20.9)	56 (25.4)	71 (32.3)	105 (47.7)	133 (60.4)	159 (72.2)	256 (116.2)	419 (190.1)	573 (260)	710 (322.1)	928 (421.0)	1163 (527.6)	1511 (685.4)				
Mounting	lugs	4-.625-11UNC			8-.625-11UNC		8-.750-10UNC		12-.875-09UNC		12-1.00-08UNC		16-1.00-08UNC		16-1.125-07UNC		20-1.125-07UNC	

Two-way Valve Bodies

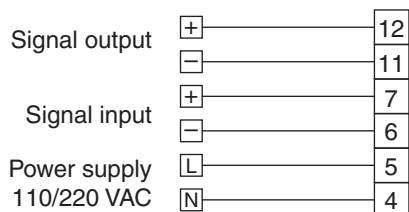


*For total valve height add dimension "D" to the actuator coupling height listed above.

Three-way Tee-mounted Valve Bodies



200/200S SERIES WIRING

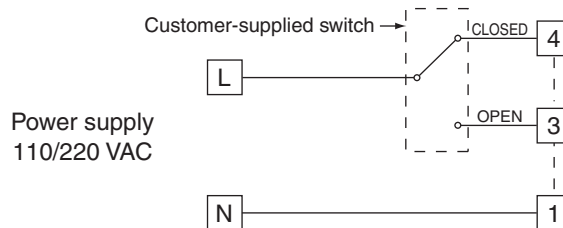


3-phase & 24 VDC powered models available

Modulating Service

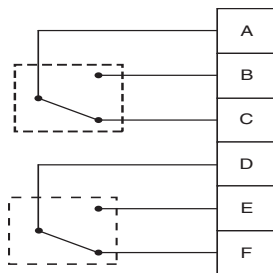
Notes:

- Input signal:
4-20 mA
1-5V
2-10V
- Output signal:
4-20 mA
2-10V



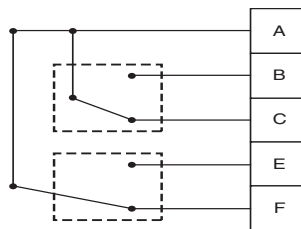
On/Off Service

AUXILIARY SWITCH WIRING



Series 202 - 226 auxiliary switch wiring

Shown at fully clockwise rotation



Series 201 auxiliary switch wiring

Shown at fully clockwise rotation



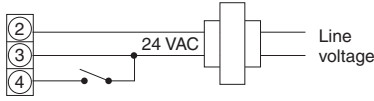
CONTROL VALVES

BUTTERFLY VALVES 522 SERIES

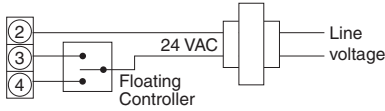
4

CONTROL VALVES

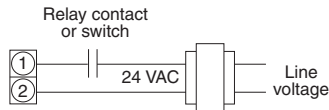
KA / KAS ACTUATOR WIRING



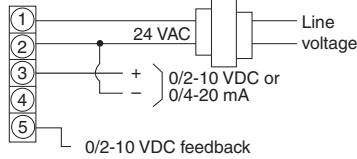
KA-175-2T - KA-301-2T
Two-position Control



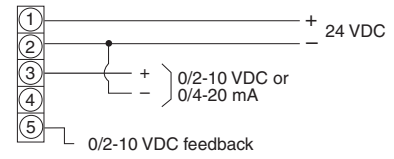
KA-175-2T - KA-301-2T
Floating Control



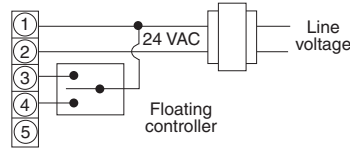
KAS-175-2
Two-position Control



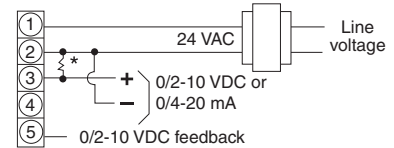
KA-301-P
Proportional Control
24 VAC Power
0/2-10 VDC or 0/4-20 mA Signal



KA-175-P - KA-301-P
Proportional Control
24 VDC Power
0/2-10 VDC or 0/4-20 mA Signal



KAS-175-M
Floating Control



* 500Ω, 1/2"W or greater resistor required when control signal is 4-20 mA

KAS-175-M
Proportional Control

ELECTRIC ACTUATOR SPECIFICATIONS (SIZED FOR 100 PSI LINE PRESSURE)

2-Way Valve Size	3-Way Valve Size	ELECTRIC ACTUATOR SPECS								
		Electric Actuator	Electric Power	Control Signal	Torque (in-lb)	Failsafe Operation	Timing seconds	Dimensions H x W x L (in)	Coupling ² Height (in)	Weight lb (kg)
2"	2"	KA-175	24 VAC, 6 VA	Two-pos/float or 2-10 VDC	175	No	95	3.9x3.6x8.8	3.25	3.2 (1.4)
2.5-5"	2.5-4"	KA-301	24 VAC, 9 VA	Two-pos/float or 2-10 VDC	301	No	95	3.9x3.6x8.8	3.25	3.2 (1.4)
2-5"	2"-4"	KAS-175	24 VAC, 16 VA	Two-pos/float or 0-10 VDC	175	Yes	90	2.9x3.9x9.8	3.25	7 (3.2)
2"-3"	2"-3"	201*	120 VAC, 0.5A	Two Position or 4-20 mA ¹	450	No	20	7.4x4.0x5	1	5 (2.3)
4"-6"	4"	202*	120 VAC, 1.0A	Two Position or 4-20 mA ¹	800	No	15	7x7.8x12.8	1	25 (11.34)
-	5"-6"	203*	120 VAC, 1.0A	Two Position or 4-20 mA ¹	1335	No	22	7x7.8x12.8	1	25 (11.34)
8"-12"	8"-10"	204*	120 VAC, 1.3A	Two Position or 4-20 mA ¹	3560	No	16	12.5x9.3x15.5	0.5	49 (22.2)
12"-14"	10"-12"	206*	120 VAC, 1.8A	Two Position or 4-20 mA ¹	5785	No	28	12.5x9.3x15.5	0.5	49 (22.2)
16"-18"	14"	207*	120 VAC, 3.2A	Two Position or 4-20 mA ¹	8850	No	46	16x9.1x17.1	4	80 (36.3)
20"	16"-18"	208*	120 VAC, 4.0A	Two Position or 4-20 mA ¹	13275	No	46	16x9.1x17.1	4	80 (36.3)
-	20"	210*	120 VAC, 4.0A	Two Position or 4-20 mA ¹	22125	No	58	22.2x15.4x17.9	5	124 (56.2)
2"-4"	2"-3"	205**	120 VAC, 1A	Two Position or 4-20 mA ¹	442	Yes	7 (3 Spring)	15.7x10.2x14.2	1	59.5 (27)
5"-6"	4"-5"	213**	120 VAC, 3.8A	Two Position or 4-20 mA ¹	1150	Yes	7 (8 Spring)	18.8x14.4x18.2	1	125.7 (57)
8"	6"	220**	120 VAC, 3.8A	Two Position or 4-20 mA ¹	1770	Yes	11 (12 Spring)	21.6x17.2x23.6	1	209.4 (95)
10"	8"	226**	120 VAC, 3.8A	Two Position or 4-20 mA ¹	2301	Yes	14 (12 Spring)	21.6x17.2x23.6	1	209.4 (95)

Notes:

- 201-212 and 205-226 electric actuators come standard with a control signal of 4-20 mA but are configurable to 1-5 VDC or 2-10 VDC.
- The KA and KAS Series actuators are Kele-brand direct-coupled actuators with NEMA 2 enclosures. They are used on smaller sized valves (5" and smaller on 2-way and 4" and smaller on 3-way).
- All 200 Series electric actuators come with integral heater.

* 201-212 series actuators are electric industrial grade actuators. Upon loss of power the valves fail in place. Upon loss of signal the valves fail in place but are configurable to drive open, closed or in place.

** 205-226 series actuators are fail closed industrial grade actuators. Upon loss of power they will fail closed CW. Upon loss of signal they will fail closed.



PNEUMATIC ACTUATOR SPECIFICATIONS (Actuators are sized for 100 psi line pressure and 80 psi air supply)

	2-Way Valve Size	3-Way Valve Size	Pneumatic Actuator Specs									
			Pneumatic Actuator	Air Source psig	Control Signal		Torque in-lb Nm = in-lb x 0.113	Failsafe Operation	Timing seconds	Dimensions H x W x L in	Coupling Height	Actuator Weight** lb (kg)
					2-Pos	Prop.						
High Pressure Double-Acting (DA)	2"-3"	2"	100-060	80-140	24 VAC*	3-15 psig	297	N/A	0.25	4.53 x 3.11 x 5.58	Direct Mount	3.4 (1.5)
	4", 5"	2.5"-4"	100-080	80-140	24 VAC*	3-15 psig	721	N/A	0.25	5.43 x 3.83 x 7.4	Direct Mount	6.1 (2.8)
	6"	5"	100-090	80-140	24 VAC*	3-15 psig	1013	N/A	0.25	5.78 x 4.17 x 8.59	Direct Mount	8.4 (3.8)
	8"	6"	100-120	80-140	24 VAC*	3-15 psig	2171	N/A	0.5	7.28 x 4.91 x 11.9	Direct Mount	16.4 (7.4)
	10"	8"	100-130	80-140	24 VAC*	3-15 psig	2894	N/A	0.5	8.09 x 5.44 x 12.31	Direct Mount	20.9 (9.5)
	12"	10"-12"	100-160	80-140	24 VAC*	3-15 psig	5742	N/A	1	9.36 x 6.82 x 15.54	Direct Mount	38.1 (17.3)
	14"-18"	14"-16"	100-210	80-140	24 VAC*	3-15 psig	11870	N/A	2	11.45 x 8.83 x 17.8	5"	65.0 (29.5)
20"	18"-20"	100-260	80-140	24 VAC*	3-15 psig	29171	N/A	2.75	13.35 x 10.75 x 26.7	1"	144 (65.3)	
Spring return actuators may require different quantity of springs indicated by the last digit in part number. Corresponding torque outputs are stated.												
High Pressure Fail Closed (FC)	2"		100-065	80-140	24 VAC*	3-15 psig	135	CW	0.25	4.53 x 3.11 x 5.58	Direct Mount	4.1 (1.9)
	2.5"/3"	2"	100-084(5)	80-140	24 VAC*	3-15 psig	255(316)	CW	0.25	5.43 x 3.83 x 7.4	Direct Mount	7.9 (3.6)
	4"	2.5"	100-095(4)	80-140	24 VAC*	3-15 psig	367(459)	CW	0.25	5.78 x 4.17 x 8.59	Direct Mount	10.8 (4.9)
	5", 6"	3", 4"	100-124(3)	80-140	24 VAC*	3-15 psig	732(915)	CW	0.5	7.28 x 4.91 x 11.90	Direct Mount	22.7 (10.3)
		5"	100-134	80-140	24 VAC*	3-15 psig	1058	CW	0.5	8.09 x 5.44 x 12.31	Direct Mount	27.3 (12.4)
	8"	6"	100-164(3)	80-140	24 VAC*	3-15 psig	1818	CW	1	9.36 x 6.82 x 15.54	Direct Mount	52.6 (23.8)
	10"/12"/14"	8"/10"	100-213(4)	80-140	24 VAC*	3-15 psig	2924(3896)	CW	2	11.45 x 8.83 x 17.8	Direct Mount	95.3 (43.2)
16"/18"/20"	12"-14"	100-264(5)(6)	80-140	24 VAC*	3-15 psig	9448(11811)(14173)	CW	2.75	13.35 x 10.75 x 26.7	1"	192.6 (87.1)	
High Pressure Fail Open (FO)	2"		100-064	80-140	24 VAC*	3-15 psig	156	CCW	0.25	4.53 x 3.11 x 5.58	Direct Mount	4.1 (1.9)
	2.5", 3"		100-084	80-140	24 VAC*	3-15 psig	360	CCW	0.25	5.43 x 3.83 x 7.4	Direct Mount	7.9 (3.6)
	4"		100-094	80-140	24 VAC*	3-15 psig	522	CCW	0.25	5.78 x 4.17 x 8.59	Direct Mount	10.8 (4.9)
	5", 6"		100-124	80-140	24 VAC*	3-15 psig	1178	CCW	0.5	7.28 x 4.91 x 11.9	Direct Mount	22.7 (10.3)
			100-136	80-140	24 VAC*	3-15 psig	2837	CCW	0.5	8.09 x 5.44 x 12.31	Direct Mount	27.3 (12.4)
	8", 10"		100-164	80-140	24 VAC*	3-15 psig	3147	CCW	1	9.36 x 6.82 x 15.54	Direct Mount	52.6 (23.8)
	12"		100-214	80-140	24 VAC*	3-15 psig	6551	CCW	2	11.45 x 8.83 x 17.8	1"	95.3 (43.2)
14"-20"		100-264	80-140	24 VAC*	3-15 psig	14929	CCW	2.75	13.35 x 10.75 x 26.7	1"	192.6 (87.1)	
Low-Pressure Pneumatic***												
	2"		D-3153-5130	20-25	0/20 psig	NA	158	Yes	15	10.0 x 8.0 x 16.0	3"	14.0 (6.4)
	2.5"-3"	2"	D-3244-5110	20-25	0/20 psig	NA	328	Yes	15	12.0 x 10.0 x 20.0	4"	24 (10.9)
	4"-6"	2.5"-4"	D-3246-5110	20-25	0/20 psig	NA	491	Yes	15	14.0 x 12.0 x 24.0	5"	35 (15.9)
	2"		D-3153-5120	20-25	NA	3-15 psig	158	Yes	15	12.0 x 10.0 x 20.0	3"	14.0 (6.4)
	2.5"-3"	2"	D-3244-5100	20-25	NA	3-15 psig	328	Yes	15	14.0 x 12.0 x 24.0	4"	24 (10.9)
	4"-6"	2.5"-4"	D-3246-5100	20-25	NA	3-15 psig	491	Yes	15	16.0 x 14.0 x 24.0	5"	35 (15.9)

Notes:

* 24 VAC solenoids are standard. 12 VDC, 24 VDC, and 12 VAC solenoids are available as well as 3-15 psi or 4-20 mA positioners.

** Weights of fail-closed and fail-open actuators are maximum weight as the number of springs may vary by application.

*** Open 70° maximum.

DA = Double Acting, FC = Fail Closed, FO = Fail Open

The 4" 3-way and 5" and 6" 2-way valves use double D-3246-5110 actuators.

Spring return actuators may require different quantity of springs indicated by ().

Contact Kele for complete actuator specifications.



CONTROL VALVES

BUTTERFLY VALVES 522 SERIES

4

CONTROL VALVES

ELECTRIC ACTUATOR CODES

ACTUATOR CODE VALVE TYPE/ SIZE	K2NX OR E2X (2-POSITION/FLOATING, NON-SPRING RETURN)	KMNX OR EMX (MODULATING, NON-SPRING RETURN)	K2SO, K2SC, OR E2C, E2O (2-POSITION/FLOATING, SPRING RETURN OPEN/CLOSED)	KMSO, KMSC, OR EMC, EMO (MODULATING, SPRING RE- TURN OPEN/CLOSED)
2-WAY/2"	KA-175-2T OR 201E2A	KA-175-P OR 201EMA	KAS-175-M OR 205S2A	KAS-175-M OR 205SMA
2-WAY/2.5"	KA-301-2T OR 201E2A	KA-301-P OR 201EMA	KAS-175-M OR 205S2A	KAS-175-M OR 205SMA
2-WAY/3"	KA-301-2T OR 201E2A	KA-301-P OR 201EMA	KAS-175-M OR 205S2A	KAS-175-M OR 205SMA
2-WAY/4"	DUAL KA-301-2T OR 201E2A	DUAL KA-301-P OR 201EMA	DUAL KAS-175-M OR 213S2A	DUAL KAS-175-M OR 213SMA
2-WAY/5"	DUAL KA-301-2T OR 202E2A	DUAL KA-301-P OR 202EMA	DUAL KAS-175-M OR 213S2A	DUAL KAS-175-M OR 213SMA
2-WAY/6"	203E2A	203EMA	213S2A	213SMA
2-WAY/8"	204E2A	204EMA	226S2A	226SMA
2-WAY/10"	204E2A	204EMA	--	--
2-WAY/12"	206E2A	206EMA	--	--
2-WAY/14"	207E2A	207EMA	--	--
2-WAY/16"	207E2A	207EMA	--	--
2-WAY/18"	208E2A	208EMA	--	--
2-WAY/20"	208E2A	208EMA	--	--
3-WAY/2"	KA-175-2T OR 201E2A	KA-175-P OR 201EMA	KAS-175-M OR 205S2A	KAS-175-M OR 205SMA
3-WAY/2.5"	KA-301-2T OR 201E2A	KA-301-P OR 201EMA	KAS-175-M OR 205S2A	KAS-175-M OR 205SMA
3-WAY/3"	DUAL KA-301-2T OR 202E2A	DUAL KA-301-P OR 202EMA	DUAL KAS-175-M OR 213S2A	DUAL KAS-175-M OR 213SMA
3-WAY/4"	DUAL KA-301-2T OR 202E2A	DUAL KA-301-P OR 202EMA	DUAL KAS-175-M OR 213S2A	DUAL KAS-175-M OR 213SMA
3-WAY/5"	203E2A	203EMA	213S2A	213SMA
3-WAY/6"	204E2A	204EMA	220S2A	220SMA
3-WAY/8"	204E2A	204EMA	--	--
3-WAY/10"	206E2A	206EMA	--	--
3-WAY/12"	207E2A	207EMA	--	--
3-WAY/14"	208E2A	208EMA	--	--
3-WAY/16"	210E2A	210EMA	--	--
3-WAY/18"	210E2A	210EMA	--	--
3-WAY/20"	212E2A	212EMA	--	--

PNEUMATIC ACTUATOR CODES

*3-Way is in () when there is a difference in 2-way and 3-way sizes. 3-way assemblies always fail closed (no H2O, HMO, P2O, PMO)

Actuator Code	H2X, HMX	H2C, HMC	H2O, HMO	P2C, PMC, P2O, PMO
Valve Size	Pneumatic double acting	Pneumatic fail closed (cw)	Pneumatic fail open (ccw)	Pneumatic fail open/ fail closed (cw)
2"	100-060	100-065 (100-084)	100-064	D-3153-5130 (D-3244-5110)
2.5"	100-060 (100-080)	100-084 (100-094)	100-084	D-3244-5110 (D-3246-5110)
3"	100-060 (100-080)	100-085 (100-123)	100-084	D-3244-5110 (D-3246-5110)
4"	100-080 (100-080)	100-095 (100-124)	100-094	D-3246-5110 (X2 FOR 3W)
5"	100-080 (100-090)	100-124 (100-134)	100-124	D-3246-5110 (X2) (NO 3W)
6"	100-090 (100-120)	100-125 (100-163)	100-124	D-3246-5110 (X2) (NO 3W)
8"	100-120 (100-130)	100-164 (100-213)	100-164	—
10"	100-130 (100-160)	100-213 (100-214)	100-164	—
12"	100-160 (100-160)	100-214 (100-263)	100-214	—
14"	100-210	100-216 (100-264)	100-264	—
16"	100-210	100-264 (NA)	100-264	—
18"	100-210 (100-260)	100-265 (NA)	100-264	—
20"	100-260 (100-260)	100-266 (NA)	100-264	—



ORDERING INFORMATION

MODEL CODE		DESCRIPTION				
522		SIZE CODE	SIZE	Cv @ 90° (TWO-POSITION)	Cv @ 70° (LOW PRESSURE PNEUMATIC) ³	Cv @ 60° (MODULATING)
02	2"			144	84	61
25	2.5"			282	163	107
03	3"			461	267	154
04	4"			841	496	274
05	5"			1,376	775	428
06	6"			1,850	1,025	567
08	8"			3,316	1,862	1,081
10	10"			5,430	2,948	1,710
12	12"			8,077	4,393	2,563
14	14"			10,538	5,939	3,384
16	16"			13,966	7,867	4,483
18	18"			17,214	10,065	5,736
20	20"			22,339	12,535	7,144
ACTUATOR CODE	OPERATION	INPUT SIGNAL		FAIL POSITION ON LOSS OF POWER SUPPLY		
KELE KA SERIES² ELECTRIC ACTUATORS - NON SPRING RETURN						
K2NX	Two-position, floating	24 VAC		N/A		
KMNX	Proportional	2-10 VDC, 4-20 mA (with 500 Ohm resistor)		N/A		
ULTRAFLO 200 SERIES ELECTRIC ACTUATORS - NON SPRING RETURN						
E2X	Two-position	120 VAC		N/A		
EMX	Proportional	2-10 VDC, 4-20 mA (with 500 Ohm resistor)		N/A		
KELE KA SERIES² ELECTRIC ACTUATORS - SPRING RETURN						
K2SO ¹	Two-position	24 VAC		Open		
K2SC	Two-position	24 VAC		Closed		
KMSO ¹	Proportional	2-10 VDC, 4-20 mA (with 500 Ohm resistor), tri-state		Open		
KMSC	Proportional	2-10 VDC, 4-20 mA (with 500 Ohm resistor), tri-state		Closed		
ULTRAFLO 200 SERIES ELECTRIC ACTUATORS - SPRING RETURN						
E2O ¹	Two-position	120 VAC		Open		
E2C				Closed		
EMO ¹	Proportional	4-20 mA		Open		
EMC				Closed		
HIGH PRESSURE PNEUMATIC - NON SPRING RETURN						
H2X	Two-position	24 VAC		N/A		
HMX	Proportional	3-15 psig or 4-20 mA		N/A		
HIGH PRESSURE PNEUMATIC - SPRING RETURN						
H2O ¹	Two-position	24 VAC		Open		
H2C				Closed		
HMO ¹	Proportional	3-15 psig or 4-20 mA		Open		
HMC				Closed		
LOW-PRESSURE PNEUMATIC - SPRING RETURN						
P2O ¹	Two-position	0/20 psig		Open		
P2C				Closed		
PMO ¹	Proportional	3-15 psig w/ Positioner		Open		
PMC				Closed		
MANUAL OPERATION						
M2X	N/A	Manual operation (2-way valves only) 2"-6" lever; 8"-20" gear operator				
BUTTERFLY VALVE ONLY						
XXX	N/A	Butterfly valve only				
CONFIGURATION CODE						
0	2-way					
1						
2						
3						
4						
5						
6	3-way (See below for illustration of 3-way configurations)					

- Notes:**
- Do not use normally open actuators for 3 way valves.
 - Kele actuators available on 5" and smaller two way and 4" and smaller three way.
 - Low pressure assemblies have a maximum open rotation of 70°, for both 2-position and modulating control.

THREE-WAY CONFIGURATION

