



ALARMS & INDICATION

POLARIS™ CLASS LED BEACON 94 SERIES

DESCRIPTION

The **Edwards Signaling Polaris Class 94PLEDM LED beacons** are NEMA Type 4X and IP66 rated visual signals designed for indoor and outdoor applications. The units are available in Edwards' 94 Series housing in 12-24 VDC, 24 VAC, 120 VAC and are field configurable with up to seven flashing patterns, including steady-on, utilizing a "Hidden In Plain Sight" (HIPS) switch. The inner, double fresnel lens is made of a high grade polycarbonate and is designed to magnify the ultra-bright LEDs inside. A clear, outer, impact-resistant polycarbonate dome offers additional protection against accidental impacts with machinery or falling objects. It also acts as a protective and simple to clean "dust and residue" cover. The Polaris Class beacons are designed to be mounted on 3/4 inch NPT conduit (indoor or outdoor). For outdoor installation and to maintain the NEMA and IP ratings, the beacon must be mounted with the dome facing directly up. When installing the beacon indoors in dry environments, it can be mounted in any position. The **94 Series** housing has a cast base that can function as a junction box. The Polaris Class is designed for any industrial or commercial applications that require the longevity of an LED and the brightness of a xenon strobe. These units are very effective in high noise areas where ear protection is worn or audible signals may not be heard.

2

ALARMS & INDICATION

FEATURES

- 12-24 VDC, 24 VAC, 120 VAC
- Six lens colors
- Seven flash patterns (includes steady-on)
- Hidden in Plain Sight (HIPS) switch
- 3/4" (19mm) NPT threaded conduit
- High level of immunity to shock and vibration
- Black or gray base option

SPECIFICATIONS

Supply Voltage	94PLEDMx24ADx 12 VDC, 0.7A; 24 VAC/DC, 0.55A
	94PLEDMx120Ax 120 VAC, 50/60Hz, 0.25A
Leakage Current	Off State Leakage 5mA
Color	Amber, Blue, Green, Magenta, Red, White/Clear
Projected LED Life	148,000 hours
Flash Mode	7 Selectable Patterns with HIPS Switch
Mounting	On 3/4 inch NPT conduit (indoor or outdoor)
Operating Temperature	-31° to 150.8°F (-35° to 66°C)
Enclosure Rating	NEMA 4X and IP66 Rated
Dimensions	8.25" x 7.75" (210 x 200 mm)
Weight	6.10 lbs (2.77 Kg)
Approvals	UL 1638 and cUL Listed (E11459)
Warranty	1.5 years

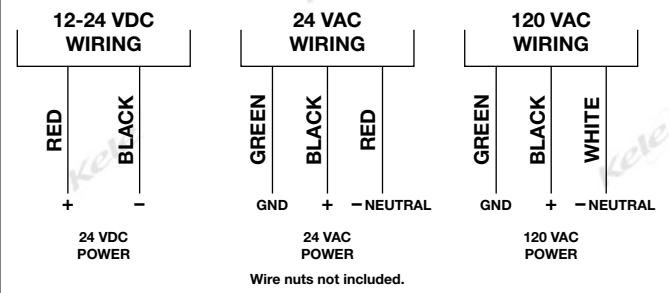


94PLEDMA 94PLEDMR 94PLEDMG

FLASH MODE

PATTERN	DESCRIPTION
Steady	Steady-On
S65	65 flashes per minute (FPM)
Light Burst	1000 FPM (seven pulses) 440 ms off/repeat
Singular Burst	120 FPM
Binary Burst	65 double FPM
Quad Burst	65 quad FPM
iBurst	750 FPM (nine pulses)/
	480 FPM (one pulse)/
	85 FPM (six pulses)/
	460 FPM (one pulse)

WIRING



ORDERING INFORMATION

MODEL	DESCRIPTION
94PLEDM	LED beacon
	COLOR
A	Amber
B	Blue
G	Green
M	Magenta
R	Red
W	White
	SUPPLY VOLTAGE
24AD	12-24 VDC, 24 VAC @ 50/60 Hz
120A	120 VAC @ 50/60 Hz
	BASE COLOR
(Blank)	Gray
B	Black
94PLEDM - G - 24AD - B	Example: 94PLEDMG24AD LED beacon with green lens, black base, and 12-24 VDC, 24 VAC @ 50/60 Hz

CBR
WBR

ACCESSORIES
Corner Mount Bracket
Wall Mount Bracket