



ACTUATORS & DAMPERS

MECHANICAL AND ELECTRICAL ACCESSORIES ACTUATOR ACCESSORIES

2

ACTUATORS & DAMPERS

| Model | Description |
|--|---|
| DAMPER ACTUATOR WEATHER SHIELDS | |
| ZS-100 | Galvanized weather shield for Belimo AFB/NFB/LF/TF/GMB/AMB/NMB/LMB |
| ZS-150 | Polycarbonate weather shield for Belimo AFB/NFB/LF/TF/GMB/AMB/NMB/LMB |
| DAMPER SHAFT CRANK ARMS | |
| KH6-K | Crank arm for 3/4" shaft, 3-1/2" length, use with BJ-809-K ball joint |
| KH8-K | Crank arm for 3/4" shaft, 3-1/2" length, use with KG8-K ball joint |
| CA-1 | Crank arm for 1" shaft, 3-1/2" length, use with BJ-809-K ball joint |
| 205830A | Crank arm/ball joint kit for KA-44, KA-88 actuators |
| KC1403S-K | Crank arm for 3/8" shaft, 2-7/8" length, use with BJ-809-K ball joint |
| KC1405L-K | Crank arm for 1/2" shaft, 4-3/4" length, use with BJ-809-K ball joint |
| BALL JOINTS | |
| BJ-809-K | Ball joint, straight, use with 5/16" diameter pushrod |
| KG8-K | Ball joint, 90° angle, use with 5/16" diameter pushrod |
| DAMPER BLADE CRANK ARMS | |
| ZG-DC1-K | Universal damper blade crank arm, 3-1/2" length |
| ZG-DC2-K | Universal damper blade crank arm, 6" length |
| DMPR-KC054 | Damper blade crank arm for JCI CD1300 dampers |
| SHAFT EXTENSIONS | |
| AV10-18-K | Shaft extension for 3/8" to 9/16" diameter shafts, 9-1/2" length |
| ZG-NMSA-1-K | Shaft extension for 1/2" diameter shaft, 2" length |
| DMPR-KC008 | Shaft extension for JCI damper square shaft, 7-1/2" length |
| DMPR-KC005-K | Shaft extension for 1/2" shafts, 7" length |
| ESK050-K | Ruskin damper shaft extension kit |
| DMPR-KC003 | Shaft extension for 1/2" shafts, 7-1/2" length |



ZS-100



ZS-150



KH6-K

KH8-K

CA-1

205830A



KC-1403S-K



KC-1405L-K



BJ-809-K



KG8-K



ZG-DC2-K



DMPR-KC054



ZG-DC1-K



AV10-18-K



ZG-NMSA-1-K



DMPR-KC008

DMPR-KC003 (shaft only)



DMPR-KC005-K



ESK050-K

DMPR-KC005-K

ACTUATORS & DAMPERS

MECHANICAL AND ELECTRICAL ACCESSORIES ACTUATOR ACCESSORIES



2

ACTUATORS & DAMPERS

| Model | Description |
|-------------------------------------|---|
| PUSH RODS | |
| PR-24 | 5/16" dia. 24" (.61m) length push rod |
| PR-48 | 5/16" dia., 48" (1.2m) length push rod |
| FLOOR MOUNT BRACKETS | |
| 50001194-001 | Universal surface mount bracket with crank arm and 1/2" shaft |
| ZG-103 | Right angle horizontal mounting bracket for Belimo GMB, NMB, AMB |
| ZG-104 | Right angle vertical mounting bracket for Belimo GMB, NMB, AMB |
| ZG-107 | Floor mounting bracket, horizontal, for AF actuators |
| ZG-108 | Floor mounting bracket, vertical, for AF actuators |
| ZG-112 | Floor mount bracket, vertical, for LF actuators |
| DAMPER MOUNT BRACKETS | |
| ZG-100 | Right angle mounting bracket for AFB/NFB and AMB/GMB actuators |
| ZG-101 | Right angle floor mount bracket for AFB/NFB and AMB/GMB actuators |
| ZG-102 | Tandem actuator mounting bracket for AF/AFB/GMB actuators |
| DMPR-KC255 | Internal-mount bracket for JCI M9000 actuators |
| POWER AND SIGNAL ACCESSORIES | |
| ZG-R01 | 500Ω, 1/2W, 1% resistor |
| 691-K0A | Control transformer, 120:24 VAC, 40 VA, Class 2 |
| 691-U100 | Class 2 control transformer, 120:24 VAC, 96 VA |
| SGF24 | Remote control dial, proportional, flush mount |
| SGA24 | Remote control dial, proportional, surface mount |



PR-24



PR-48



50001194-001



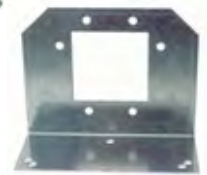
ZG-103



ZG-104



ZG-107



ZG-108



ZG-100



ZG-101



ZG-112

ZG-102



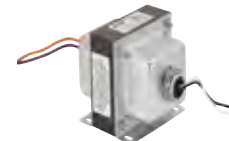
DMPR-KC255



ZG-R01



691-K0A



691-U100



SGF24



SGA24